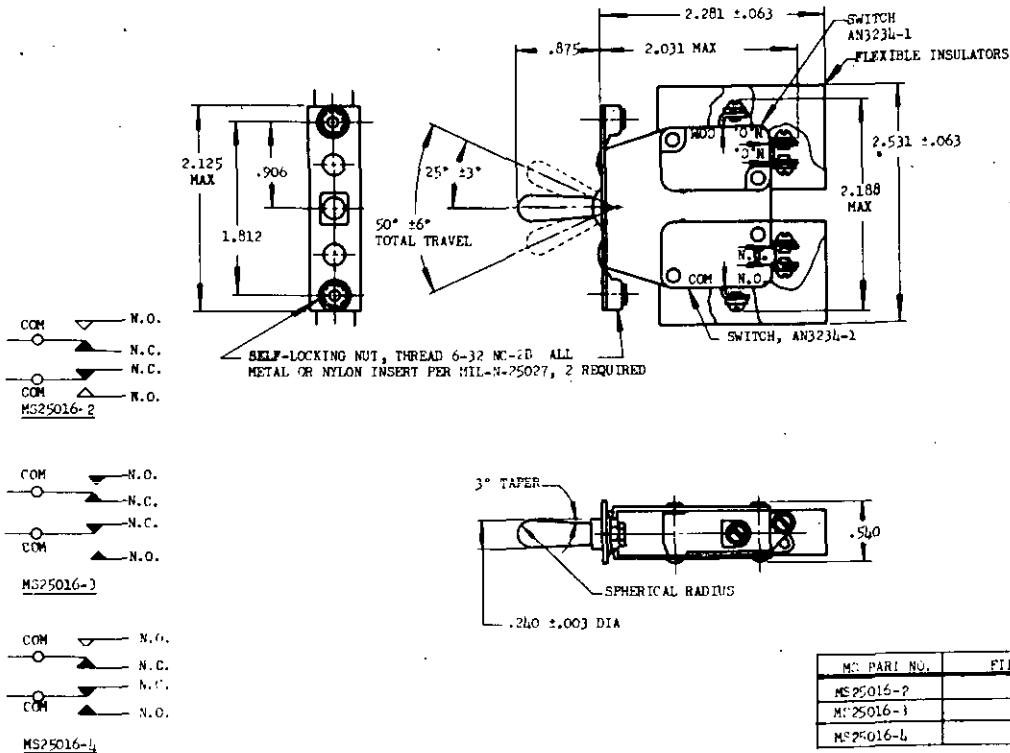


FED. SUP CLASS.
5930

NOTICE: When Government drawings, specifications, or other data are used for any purpose other than in connection with a definitely related Government procurement operation, the United States Government thereby incurs no responsibility, nor any obligation whatsoever, and the fact that the Government may have furnished, furnished, or in any way supplied the said drawings, specifications, or other data is not to be regarded by implication or otherwise as in any manner recommending the number, or any other proprietary designation, or conveying any right or preference in connection with the manufacture, use, or sale of any article, material, or process, or any other thing, which may in any way be related thereto.



MS PART NO.	TOGGLE LEVER IN			CURRENT CAPACITY (AMPERES) 28 VOLTS DC				CURRENT CAPACITY (AMPERES) 115 VOLTS 400 CYCLES			
	ONE EXTREME POSITION	CENTER POSITION	OTHER EXTREME POSITION	CONTINUOUS	LAMP LOAD CIRCUIT	RESISTIVE CIRCUIT	INDUCTIVE CIRCUIT	CONTINUOUS	LAMP LOAD CIRCUIT	RESISTIVE CIRCUIT	INDUCTIVE CIRCUIT
MS25016-1	MOMENTARY	MAINTAINED	MOMENTARY	10	3	10	6	10	3	10	10
MS25016-2	MOMENTARY	MAINTAINED	MOMENTARY	10	3	10	6	10	3	10	10
MS25016-3	MAINTAINED	MAINTAINED	MAINTAINED	10	3	10	6	10	3	10	10
MS25016-4	MAINTAINED	MAINTAINED	MOMENTARY	10	3	10	6	10	3	10	10

(a) PART NUMBER MS25016-1 INACTIVE FOR DESIGN AFTER 25 AUGUST 1954. PART NUMBER MS25016-2 REPLACES PART NUMBER MS25016-1.

FOR DEFINITION AND APPLICATION OF DRAWING STATUS NOTES, SEE ANA BULLETIN NO. 337.

FINISH: TERMINALS ARE PLATED TO FACILITATE SOLDERING.

MOVEMENT OF TOGGLE LEVER SHALL ACTIVATE THE BUTTON OF THE AN3234 SWITCH IN A DIRECTION OPPOSITE THE MOTION OF THE TOGGLE HANDLE.

DETENT MECHANISM AND CONTOUR OF CASE OPTIONAL, PROVIDED MAXIMUM DIMENSIONS ARE NOT EXCEEDED.

DIMENSIONS IN INCHES. UNLESS OTHERWISE SPECIFIED, TOLERANCES: DECIMALS ±.010, ANGLES ±1/2°.

(c) ENTIRE DRAWING REVISED.

THIS STANDARD TAKES PRECEDENCE OVER DOCUMENTS REFERENCED HEREIN.

REFERENCED DOCUMENTS SHALL BE OF THE ISSUE IN EFFECT ON DATE OF INVITATION FOR BID.

CANCELED AFTER 16 JUNE 1979 NO SUPERSEDING STANDARD

THIS DOCUMENT HAS BEEN PROMULGATED BY THE DEPARTMENT OF DEFENSE AS THE MILITARY STANDARD TO LIMIT THE SELECTION OF THE ITEM, PRODUCT, OR DESIGN COVERED HEREIN IN ENGINEERING, DESIGN, AND PROCUREMENT. THIS STANDARD SHALL BECOME EFFECTIVE NOT LATER THAN 90 DAYS AFTER THE LATEST DATE OF APPROVAL SHOWN.

CUSTODIANS Navy - BuAer Air Force Army SigC	OTHER INT. A - N - AF -	MILITARY STANDARD SWITCH ASSEMBLY, TOGGLE ACTUATED, CENTER ON	MS25016
	PROCUREMENT SPECIFICATION MIL-S-6744		

DD FORM 672-1
1 OCT 52

U.S. GOVERNMENT PRINTING OFFICE: 1979-603-022/2525

APPROVED 16 Jul 52 REVISED (A) 25 Aug 54 (B) 6 Sep 55 (C) 7 Nov 56 (D) 16 Jun 79