

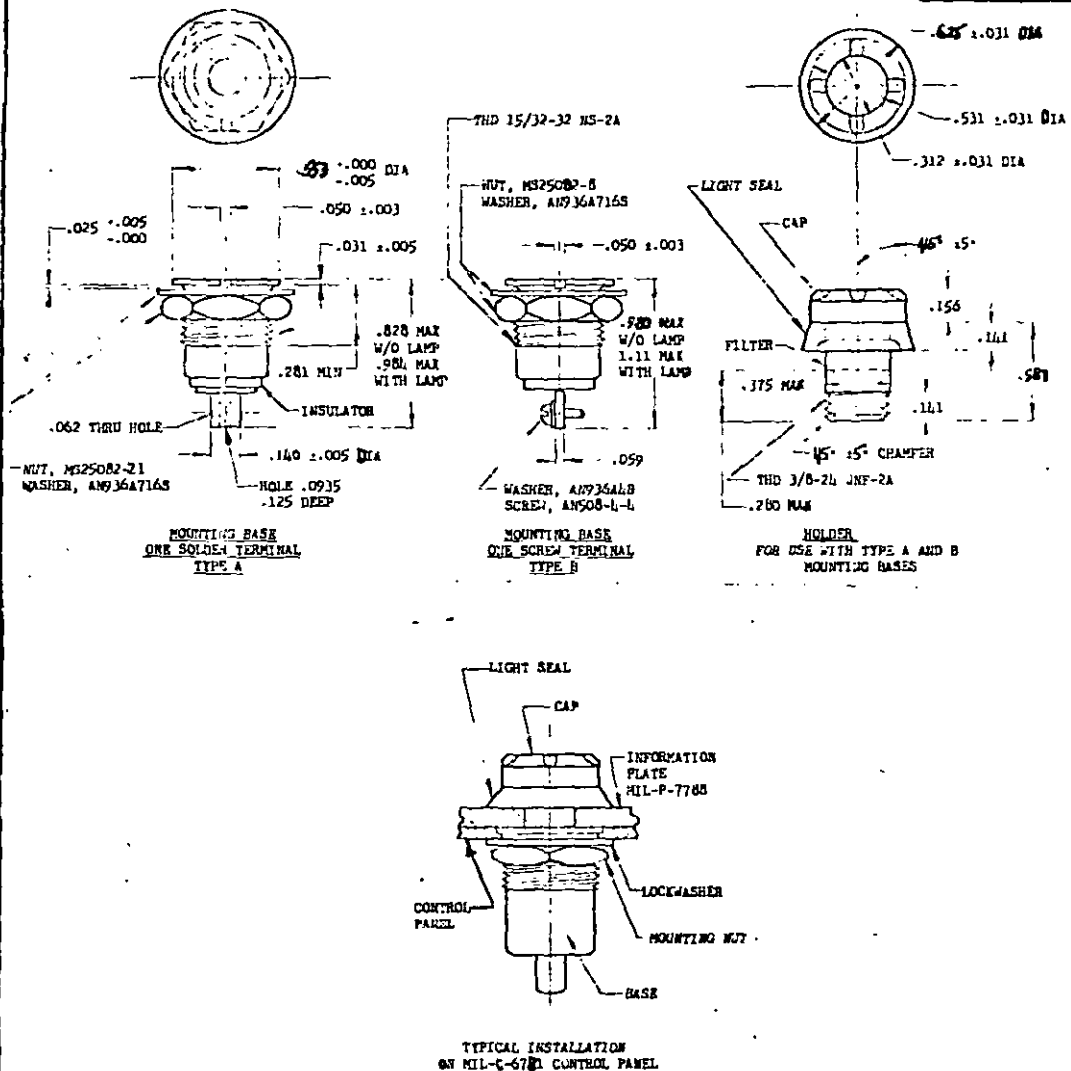
FED. SUP CLASS
6210

ИСТОРИЯ ИДЕА

REVIEWER SYMBOLS:
ARMY - AV

"Review/user information is current as of the date of this document, for future coordination of changes to this document, draft circulation should be based on the information in the current ~~000000~~."

This military standard is approved for use by all Departments & Agencies of the Department of Defense. Solicitation for all new manufacturing and design applications and for repetitive use shall be made from this document.



TYPE C MOUNTING BASE CANCELED 5 FEBRUARY 1971
SUPERSEDED BY PART NUMBERS
LISTED IN TABLE ON SHEET 2.
TYPE A AND B MOUNTING BASE
INACTIVE FOR NEW DESIGN.

ENTIRE STANDARD REVISED

P.A. Navy - AS Other Coast USAF - 02 Army - NE	TITLE LIGHT, PANEL - PLASTIC PLATE LIGHTING	MILITARY STANDARD MS25010
PROCUREMENT SPECIFICATION MIL-L-7006	SUPERSEDES:	SHEET 1 OF 2

DD FORM 672-1 (Coordinated)

RECEIVED OFFICE OF THE ATTORNEY GENERAL

APPROVED 17 Oct 51 REVISED 20 Aug 53 (A) 13 Jun 56, C 11 Dec 54 (P) 5 FEB 71 (F) 13 SEP 74

USER SYMBOLS:

REVIEW SYMBOLS:
ARMY - AV

*Review/audit information is current as of the date of this document.
For future coordination of changes to this document, direct circulation
should be based on the information in the current DD0189.

This military standard is approved for use by all Departments
& Agencies of the Department of Defense. Solicitation for all new
engineering and design applications and for revisions are shall
be made from this document.

FED. SUP CLASS
6210

MOUNTING BASE PART NO.	BASE TYPE	NO. OF TERMINALS	TERMINAL TYPE
MS25010A	A	1	SOLDER
MS25010B	B	1	SCREW

LAMP (REF)		
PART NO.	TRADE NO.	VOLTAGE
MS25237-327	327	28
MS25237-328	328	6

SUPERSESSOR DATA	
LAMP/HOLDER LENS	MIL-L-3661/51 LH92/1 MIL-L-3661/34 LC34
TYPE DESIGNA- TION	LC34 EN2/DO2
	LC34 CN2/DO2
	LC34 EN2/EN2
	LC34 CN2/EN2
	LC34 EN2/SO2
	LC34 CN2/SO2

HOLDER DASH NUMBERS	FOR BASE TYPE	HOLDER		
		CAP		FILTER COLOR
		COLOR	TYPE	
-11A	A	BLACK	OPAQUE	RED
-11A	B	BLACK	OPAQUE	RED
-12A	A	BLACK	OPAQUE	CLEAR
-12A	B	BLACK	OPAQUE	CLEAR
-13A	A	RED	TRANSPARENT	RED
-13A	B	RED	TRANSPARENT	RED
-14A	A	RED	TRANSPARENT	CLEAR
-14A	B	RED	TRANSPARENT	CLEAR
-15A	A	GRAY	OPAQUE	RED
-15A	B	GRAY	OPAQUE	RED
-16A	A	GRAY	OPAQUE	CLEAR
-16A	B	GRAY	OPAQUE	CLEAR

MATERIAL: LAMP/HOLDER (THREADED PORTION): BRASS, CADMIUM IRIDITE FINISH.
MOUNTING BASE: BLACK ANODIZED ALUMINUM OR BRASS, CADMIUM PLATE, QQ-P-416.
DIMENSIONS IN INCHES: UNLESS OTHERWISE SPECIFIED, TOLERANCES: DECIMALS $\pm .016$.
PART NUMBERS: THE PART NUMBERS FOR AN ASSEMBLY, CONSISTING OF MOUNTING BASE AND HOLDER, WILL BE THE MS
PART NUMBER FOR THE MOUNTING BASE, FOLLOWED BY THE DASH NUMBER FOR THE HOLDER.
EXAMPLE: THE PART NO. FOR A LIGHT, ONE SOLDER TYPE TERMINAL BASE, BLACK OPAQUE CAP, AND RED FILTER LESS
LAMP IS MS25010A11A

L
HOLDER
BASE

THE PART NUMBER FOR THE MOUNTING BASE SHALL BE MARKED ON THE BASE, LOCATION IS OPTIONAL. MARKING OF PART
NO. ON HOLDER IS OPTIONAL.
THE SHIPPING CONTAINER SHALL BE MARKED WITH THE MS PART NO. OF THE ASSEMBLY IT CONTAINS.

LIGHT COLORS SHALL BE AS FOLLOWS:

CLEAR IS COLORLESS, AVIATION WHITE - NON-DIFFUSING.
RED IS AVIATION RED, NO PALER OR YELLOWER THAN A COLOR MATCHING THE CHROMATICITY OF CIE ILLUMINANT A
(2,854°K) VIEWED THROUGH NATIONAL BUREAU OF STANDARDS FILTER NBS 3215. INSTRUMENT LIGHTING LIMIT
FILTER.
CAP COLOR: GRAY, FED STD 595-NO.36231, BLACK (DULL), FED STD 595-NO.37038, RED (TRANSPARENT) AVIATION
RED ABOVE.

LAMP SHALL BE RETAINED IN HOLDER WHEN HOLDER IS REMOVED FROM THE BASE. HOLDER SHALL HAVE AN INSERT
SPRING.

PREVIOUS PART NUMBERS INDICATED IN TABLE BELOW ARE INACTIVE FOR NEW DESIGN
AFTER 8 JULY 1963.

NEW PART NO.	PREVIOUS PART NO.	NEW PART NO.	PREVIOUS PART NO.
MS25010A11A	MS25010A11A327	MS25010A11A	MS25010-2A
MS25010B11A	MS25010B11A327	MS25010B11A	MS25010-6A
MS25010A13A	MS25010A13A327	MS25010A13A	MS25010-6A
MS25010B13A	MS25010B13A327	MS25010B13A	MS25010-8A

FOR GOVERNMENT PROCUREMENT LIGHTS SHALL BE FURNISHED WITHOUT LAMPS.

FOR DESIGN FEATURE PURPOSES, THIS STANDARD TAKES PRECEDENCE OVER PROCUREMENT DOCUMENTS REFERENCED HEREIN.
REFERENCED DOCUMENTS SHALL BE OF THE ISSUE IN EFFECT ON DATE OF INVITATIONS FOR BID.

P.A. NAVY - AS	TITLE	MILITARY STANDARD
Other Cust USAF - B2 ARMY - ME	LIGHT, PANEL-PLASTIC PLATE LIGHTING	MS25010
PROCUREMENT SPECIFICATION MIL-I-7806	SUPERSEDES:	SHEET 2

DD FORM 672-1 (Coordinated)

PREVIOUS EDITIONS OF THIS FORM ARE OBSOLETE.

PLATE 68, 15520

APPROVED 17 Oct 51 REVISED 7 FOR CHANGES SEE SHEET 1 AND 2