

INCH-POUND

MS24614L

5 October 2011

SUPERSEDING

MS24614K

30 September 1986

DETAIL SPECIFICATION SHEET

SWITCH, TOGGLE, POSITIVE BREAK, LEVER LOCK, ENVIRONMENTALLY SEALED,
SCREW TERMINAL, FOUR POLE, .469 MOUNTING BUSHING, 25 AMPERES

Inactive For new design after 24 JUNE 2005

This specification is approved for use by all Departments and Agencies of the Department of Defense.

The requirements for acquiring the products described herein shall consist of this specification sheet and MIL-DTL-8834.

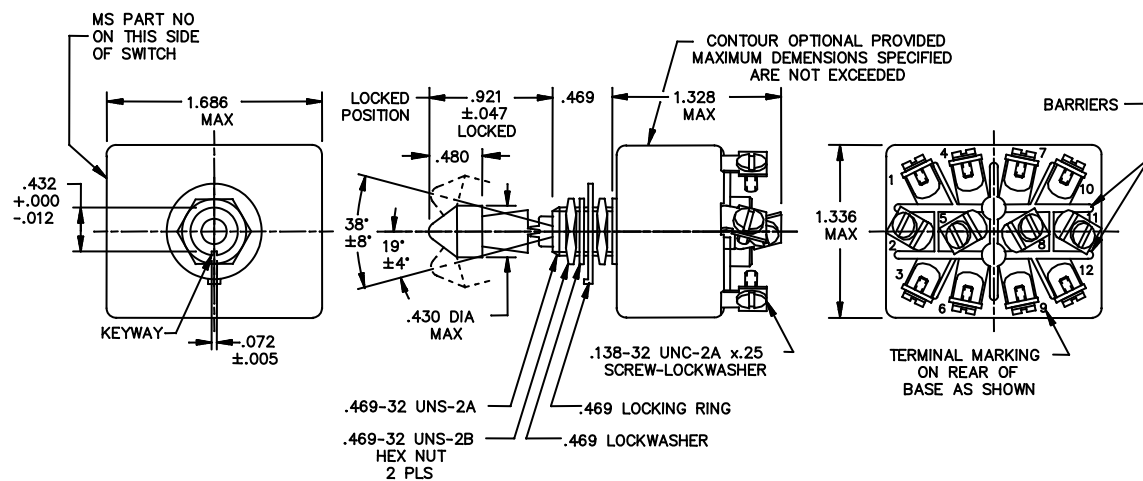


FIGURE 1. Dimensions and configuration.

MS24614L

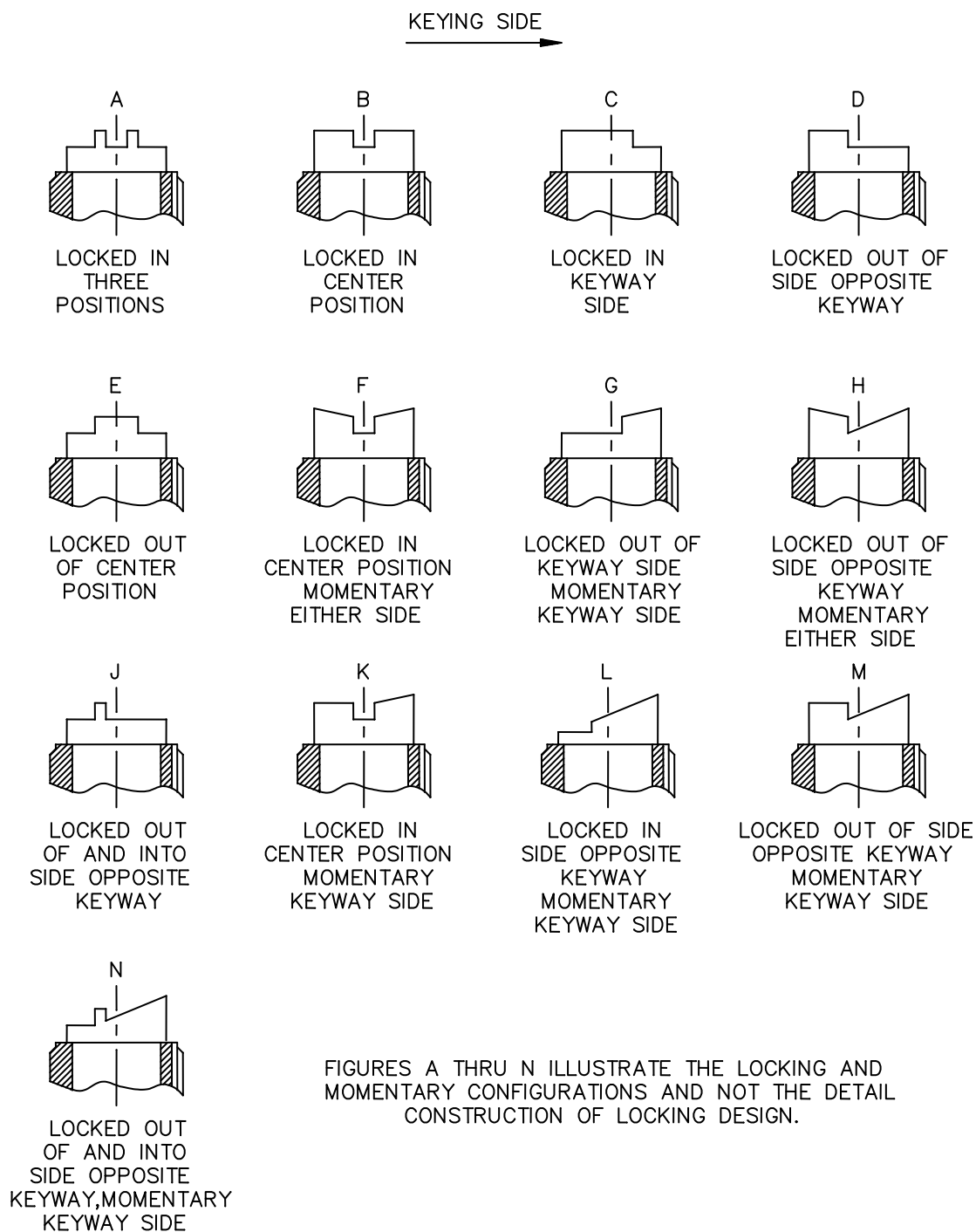


FIGURE 1. Dimensions and configuration - Continued.

MS24614L

MS dash number	Superseded dash number sealed						
Environmentally sealed	Toggle	Environmental	Toggle	Inches	mm	Inches	mm
-212	-21	-21S	-211	.005	0.13	.432	10.97
-222	-22	-22S	-221	.012	0.30	.469	11.91
-232	-23	-23S	-231	.047	1.19	.480	12.19
-242	-24	-24S	-241	.072	1.83	.921	23.39
-262	-26	-26S	-261	.138	3.51	1.328	33.73
-272	-27	-27S	-271	.250	6.35	1.336	33.93
-282	-28	-28S	-281	.430	10.92	1.686	42.82
-292	-29	-29S	-291				
-302	-30	-30S	-301				
-312	-31	-31S	-311				

Maximum vibration detail
Acceleration Frequency
G-units Hz
20 G's 85-200
10 G's 200-500

Example of Part or Identifying Number (PIN):

MS24614B212 = on-off-on, environmentally sealed, locked in center off position.

MS24614F272 = mom-on, off, mom-on, environmentally sealed, locked in center off position.

NOTES:

1. Dimensions are in inches.
2. Metric equivalents are given for general information only.
3. Unless otherwise specified, tolerances are ± 0.010 (0.25 mm) on decimals and $\pm 5^\circ$ on angles.

FIGURE 1. Dimensions and configuration - Continued.

REQUIREMENTS:

For hardware and terminal screw detail specifications, see appendix of MIL-DTL-8834.

In the event of a conflict between the text of this specification and the references cited herein, the text of this specification shall take precedence.

The superseded dash numbers are inactive for design after 20 July 1962.

The MS dash numbers supersede and are completely interchangeable with the superseded dash numbers.

Unlocking force = 4 ± 1 pound.

Maximum weight: .2231 pound maximum (101.2 grams).

Altitude requirements: 80,000 feet.

115 V ac 60 hertz electrical endurance tests are to be performed at room temperature and pressure.

MS24614L

TABLE I. Detail requirements.

MS dash no.	Locking comb.	Circuit made between terminals as indicated with the toggle lever in these positions:		
Environmentally sealed		Opposite keyway side	Center position	Keyway side
212	A, B, C, D, E	on 2-3, 5-6, 8-9, 11-12	off	on 1-2, 4-5, 7-8, 10-11
222	C, E		none	off
232				on 1-2, 4-5, 7-8, 10-11
242	J, B		off	none
262	L		none	mom-on 1-2, 4-5, 7-8, 10-11
272	F, H	mom-no 2-3, 5-6, 8-9, 11-12	off	
282	K	none		
292	L	on 2-3, 5-6, 8-9, 11-12	none	mom-off
302		off		mom-on 1-2, 4-5, 7-8, 10-11
312	G, K, M, N	on 2-3, 5-6, 8-9, 11-12	off	

1/ See footnote at end of table.

TABLE I. Detail requirements - Continued

MS dash no.	Current capacity amperes per pole 28 volts dc			Current capacity amperes per pole 115 volts 400 hertz			Circuit capacity amperes per pole 115 volts 60 hertz		
Environmental sealed	Lamp load circuit	Resistive circuit	Inductive circuit	Lamp load circuit	Resistive circuit	Inductive circuit	Lamp load circuit	Resistive circuit	Inductive circuit
212	7	25	15	7	25	15	7	20	15
222									
232									
242									
262									
272									
282									
292									
302									
312									

1/ See footnote at end of table.

MS24614L

TABLE I. Detail requirements - Continued

MS dash no.	Current capacity amperes per pole 250 volts 60 hertz ac <u>1/</u>			Current capacity amperes per pole 125 volts dc <u>1/</u>			Circuit capacity amperes per pole 250 volts dc <u>1/</u>			Life low current level switching 30 mV
Environ- mentally sealed	Lamp load circuit	Resis- tive circuit	Induc- tive circuit	Lamp load circuit	Resis- tive circuit	Induc- tive circuit	Lamp load circuit	Resis- tive circuit	Induc- tive circuit	
212		10	7		750 mA	---		500 mA	---	10 mA
222										
232										
242										
262										
272										
282										
292										
302										
312										

1/ Application information ratings at room temperature.

Referenced documents:
MIL-DTL-8834

Changes from previous issue. Marginal notations are not used in this revision to identify changes with respect to the previous issue due to the extent of the changes.

Custodians:
Army - CR
Navy - AS
Air Force - 85
DLA - CC

Preparing activity:
DLA - CC

(Project 5930-2011-084)

NOTE: The activities listed above were interested in this document as of the date of this document. Since organizations and responsibilities can change, you should verify the currency of the information above using the ASSIST Online database at <https://assist.daps.dla.mil/>