

INCH-POUND

MS24613K
w/Amendment 1
13 November 2014
SUPERSEDING
MS24613K
5 October 2011

DETAIL SPECIFICATION SHEET

SWITCH, TOGGLE, POSITIVE BREAK, LEVER LOCK, ENVIRONMENTALLY SEALED,
SCREW TERMINAL, DOUBLE POLE, .469 MOUNTING BUSHING, 25 AMPERES

This specification is approved for use by all Departments and Agencies of the Department of Defense.

The requirements for acquiring the products described herein shall consist of this specification sheet and MIL-DTL-8834.

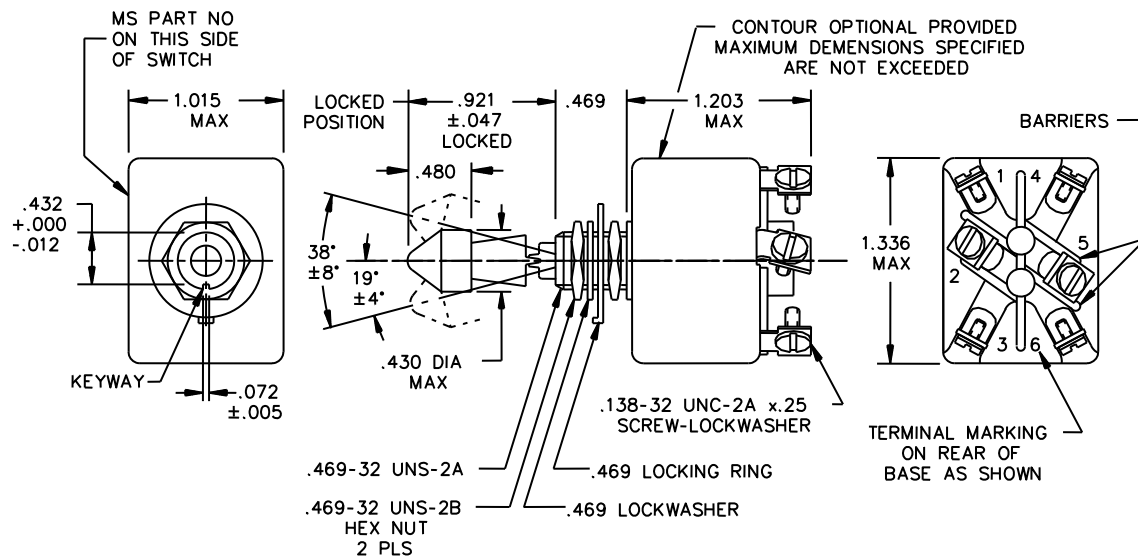


FIGURE 1. Dimensions and configuration.

MS24613L
w/Amendment 1

KEYING SIDE
→

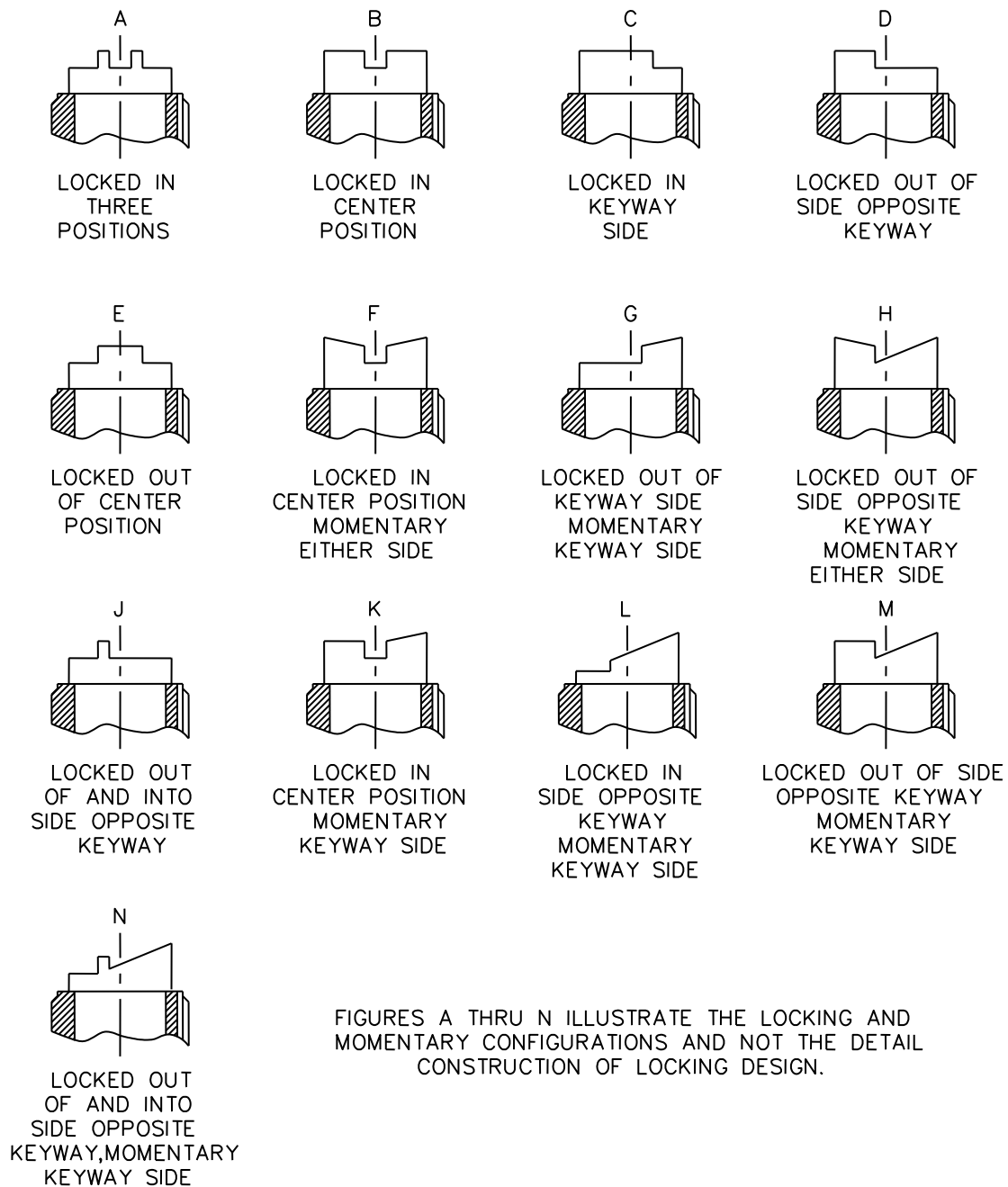


FIGURE 1. Dimensions and configuration - Continued.

MS24613L
w/Amendment 1

MS dash number	Superseded dash number sealed						
Environmental sealed	Toggle	Environmental	Toggle	Inches	mm	Inches	mm
-212	-21	-21S	-211	.005	0.13	.432	10.97
-222	-22	-22S	-221	.012	0.30	.469	11.91
-232	-23	-23S	-231	.047	1.19	.480	12.19
-242	-24	-24S	-241	.072	1.83	.921	23.39
-262	-26	-26S	-261	.138	3.51	1.015	25.78
-272	-27	-27S	-271	.250	6.35	1.203	30.56
-282	-28	-28S	-281	.430	10.92	1.336	33.93
-292	-29	-29S	-291				
-302	-30	-30S	-301				
-312	-31	-31S	-311				

Example of Part or Identifying Number (PIN):

MS24613-B212 = on-off-on, environmentally sealed, locked in center off position.

MS24613-F272 = mom-on, off, mom-on, environmentally sealed, locked in center off position.

The MS dash numbers supersede and are completely interchangeable with the superseded dash numbers.

NOTES:

1. Dimensions are in inches.
2. Metric equivalents are given for general information only.
3. Unless otherwise specified, tolerances are ± 0.010 (0.25 mm) on decimals and $\pm 0.5^\circ$ on angles.

FIGURE 1. Dimensions and configuration - Continued.

REQUIREMENTS:

For hardware and terminal screw detail specifications, see appendix of MIL-DTL-8834.

In the event of a conflict between the text of this specification and the references cited herein, the text of this specification shall take precedence.

The superseded dash numbers are inactive for design after 20 July 1962.

Maximum weight: .1453 pound 65.9 grams).

Unlocking force = 4 ± 1 pound.

Altitude requirements: 80,000 feet.

115 V ac 60 hertz electrical endurance tests are to be performed at room temperature and pressure.

TABLE I. Detail requirements.

MS dash no.	Locking comb.	Circuit made between terminals as indicated with the toggle lever in these positions:			Current capacity amperes per pole 28 volts dc			Current capacity amperes per pole 115 volts 400 hertz			Circuit capacity amperes per pole 115 volts 60 hertz		
Environmentally sealed					Lamp load circuit	Resis- tive circuit	Induc- tive circuit	Lamp load circuit	Resis- tive circuit	Induc- tive circuit	Lamp load circuit	Resis- tive circuit	Induc- tive circuit
212	A, B, C, D, E	on 2-3, 5-6	off	on 1-2, 4-5	7	25	15	7	25	15	7	20	15
222	C, E		none	off on 1-2, 4-5									
232													
242	J, B		off	none									
262	L		none	mom-on 1-2, 4-5									
272	F, H	mom-no 2-3, 5-6	off										
282	K	none	mom-off										
292	L	on 2-3, 5-6		none									
302		off											
312	G, K, M, N	on 2-3, 5-6	off	mom-on 1-2, 4-5									

1/ See footnote at end of table.

MS24613L
w/Amendment 1

MS24613L
w/Amendment 1

TABLE I. Detail requirements - Continued

MS dash no.	Current capacity amperes per pole 250 volts 60 Hertz ac <u>1/</u>			Current capacity amperes per pole 125 volts dc <u>1/</u>			Circuit capacity amperes per pole 250 volts ac <u>1/</u>			Life low current level switching 30 mV
Environ- mentally sealed	Lamp load circuit	Resis- tive circuit	Induc- tive circuit	Lamp load circuit	Resis- tive circuit	Induc- tive circuit	Lamp load circuit	Resis- tive circuit	Induc- tive circuit	
212		10	7		750 mA	---		500 mA	---	10 mA
222										
232										
242										
262										
272										
282										
292										
302										
312										

1/ Application information ratings at room temperature.

Referenced document:
MIL-DTL-8834

Changes from previous issue. The margins of this specification are marked with vertical lines to indicate where modifications from this amendment were made. This was done as a convenience only and the Government assumes no liability whatsoever for any inaccuracies in these notations. Bidders and contractors are cautioned to evaluate the requirements of this document based on the entire content irrespective of the marginal notations.

Custodians:
Army - CR
Navy - AS
Air Force - 85
DLA - CC

Preparing activity:
DLA – CC

(Project 5930-2014-015)

Review activities:
Army - AR, MI
Navy - EC
Air Force - 99

NOTE: The activities listed above were interested in this document as of the date of this document. Since organizations and responsibilities can change, you should verify the currency of the information above using the ASSIST Online database at <https://assist.dla.mil/>