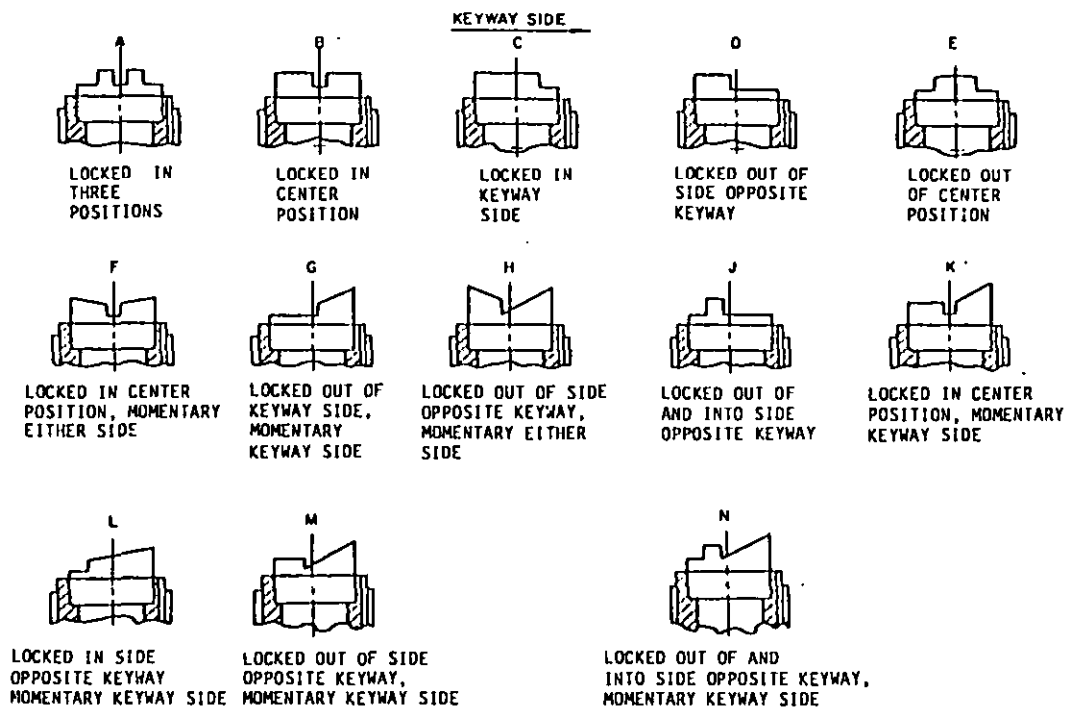
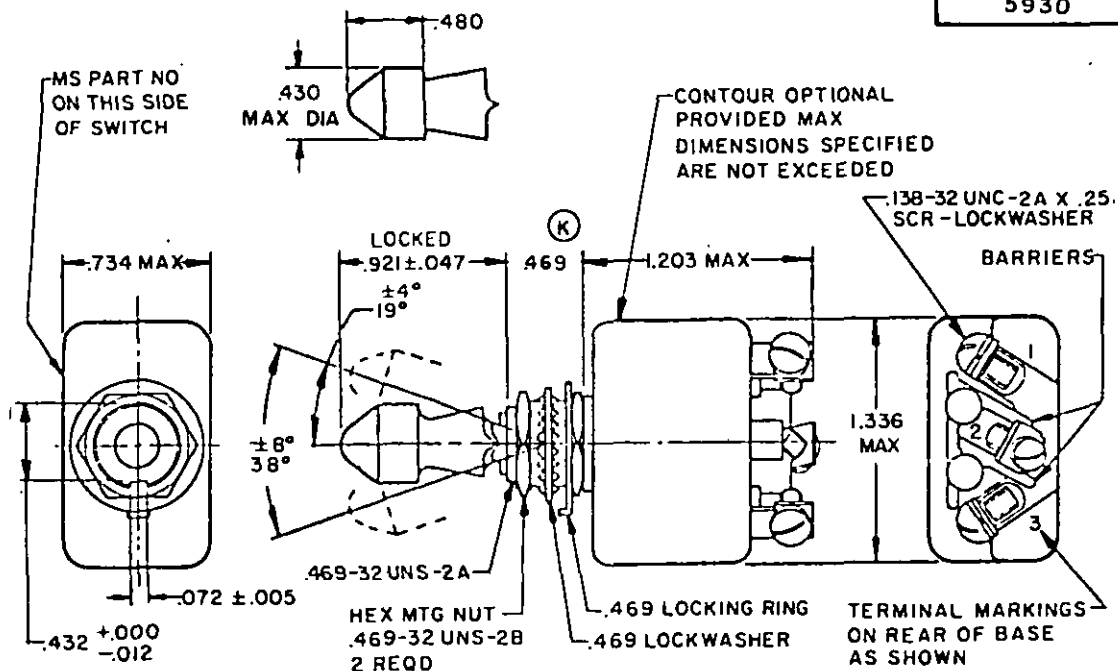


FED. SUP CLASS
5930

User activities: Army -
Navy -
Air Force -

Review activities: Army - ER, AR, MI
Navy - AS, EC
Air Force - 11, 17, 99

This military standard is approved for use by all Departments and Agencies of the Department of Defense. Selection for all new engineering and design applications and for repetitive use shall be made from this document when applicable.



FIGURES A thru N. Illustrate the locking and momentary configurations and not the detail construction of the locking design.

(K) DENOTES CHANGE

P.A AF-85 Other Cust ARMY-ER NAVY-AS	International Interest ASCCAS 12/16A	TITLE SWITCH, TOGGLE, POSITIVE BREAK, LEVER LOCK, ENVIRONMENTALLY SEALED, SCREW TERMINAL, SINGLE POLE, .469 MOUNTING BUSHING, 25 AMPERES	MILITARY STANDARD MS24612
Procurement Specification MIL-S-8834	SUPERSEDES: MS0024612 (USAF)	PAGE 1 OF 4	

DD FORM 672 (Coordinated) PREVIOUS EDITIONS OF THIS FORM ARE OBSOLETE.

5930-1331-04

AMSC N/A

Distribution Statement A. Approved for public release; distribution is unlimited.

APPROVED 18 AUG 60 REVISED (K) 30 SEP 86

This military standard is approved for use by all Departments and Agencies of the Department of Defense. Selection for all new engineering and design applications and for repetitive use shall be made from this document when applicable.

Review activities: Army - ER,AR,MJ
Navy - AS,EC
Air Force - 11,17,99

User activities: Army -
Navy -
Air Force -

FED. SUP CLASS
5930

DETAIL REQUIREMENTS

AS LOCKING LOADS 10.1 COMB. TERMINAL MENTAL SEALED	CIRCUIT MADE BETWEEN TERMINALS AS INDICATED WITH THE TOGGLE LEVER IN THESE POSITIONS:		CURRENT CAPACITY AMPERES PER POLE 28 VOLTS DC			CURRENT CAPACITY AMPERES PER POLE 115 VOLTS 100 HERTZ			CURRENT CAPACITY AMPERES PER POLE 115 VOLTS 60 HERTZ		
	OPPOSITE KEYWAY SIDE	CENTER POSITION	KEYWAY SIDE	LAMP LOAD CIRCUIT	RESIS- TIVE CIRCUIT	INDUC- TIVE CIRCUIT	LAMP LOAD CIRCUIT	RESIS- TIVE CIRCUIT	INDUC- TIVE CIRCUIT	LAMP LOAD CIRCUIT	RESIS- TIVE CIRCUIT
212 A,B,C, D,E		OFF	ON 1-2								
222 C,E		NONE	OFF								
232	ON 2-3		ON 1-2								
242 J,B		OFF	NONE								
262 L		NONE									
272 F,H	NOM-ON 2-3	OFF	NOM-ON 1-2	7	25	15	7	25	15	7	20
282 K	NONE										15
292 L	ON 2-3	NONE	NOM-OFF								
302	OFF		NOM-ON 1-2								
312 G,X,M N	ON 2-3	OFF									

1/ Application information ratings at room temperature.

P.A
AIR FORCE-85
Other Cust
ARMY-ER
NAVY-AS

International
Intersect
ASCCAS
12/16A

TITLE
SWITCH, TOGGLE, POSITIVE BREAK,
LEVER LOCK, ENVIRONMENTALLY SEALED,
SCREW TERMINAL, SINGLE POLE, .469
MOUNTING BUSHING, 25 AMPERES

MILITARY STANDARD

MS24612

Procurement Specification
MIL-S-8834

SUPERSEDES: MS0024612(USAF)

PAGE 2 OF 4

APPROVED 18 AUG 60 REVISED (K) For changes see page 1 & 3

This military standard is approved for use by all Departments and Agencies of the Department of Defense. Selection for all new engineering and design applications and for repetitive use shall be made from this document when applicable.

Review activities: Army - ER, AR, MI
Navy - AS, EC
Air Force - 11, 17, 99

User activities: Army -
Navy -
Air Force -

FED. SUP CLASS
5930

DETAIL REQUIREMENTS

DASH NO. ENVIRONMENTAL SEALED	CURRENT CAPACITY 1/ AMPERES PER POLE 250 VOLTS 60 HERTZ AC			CURRENT CAPACITY 1/ AMPERES PER POLE 125 VOLTS DC			CURRENT CAPACITY 1/ AMPERES PER POLE 250 VOLTS DC			LIFE LOW CURRENT LEVEL SWITCHING 30 mV
	LAMP LOAD CIRCUIT	RESIS- TIVE CIRCUIT	INDUC- TIVE CIRCUIT	LAMP LOAD CIRCUIT	RESIS- TIVE CIRCUIT	INDUC- TIVE CIRCUIT	LAMP LOAD CIRCUIT	RESIS- TIVE CIRCUIT	INDUC- TIVE CIRCUIT	
212										
222										
232										
242										
262										
272		10	7		750 mA	-		500 mA	-	10 mA
282										
292										
302										
312										

1/ Application information ratings at room temperature.

P.A.
AIR FORCE-85
Other Cust
ARMY-ER
NAVY-AS

International
Interest
ASCCAS
12/16 A

TITLE

SWITCH, TOGGLE, POSITIVE BREAK,
LEVER LOCK, ENVIRONMENTALLY SEALED,
SCREW TERMINAL, SINGLE POLE, .469
MOUNTING BUSHING, 25 AMPERES

MILITARY STANDARD

MS24612

Procurement Specification
MIL-S-8834

SUPERSEDES:

MS0024612(USAF)

PAGE **3** OF **4**

DD FORM 672
1 MAY 73

(Coordinated) PREVIOUS EDITIONS OF THIS FORM ARE OBSOLETE.

APPROVED 18 AUG 60 REVISED (K) FOR CHANGES SEE PAGE 1 & 3

FED. SUP CLASS
5930User activities:
Army -
Navy -
Air Force -Review activities:
Army - ER, AR, MI
Navy - AS, EC
Air Force - 11, 17, 99

This military standard is approved for use by all Departments and Agencies of the Department of Defense. Selection for all new engineering and design applications and for repetitive use shall be made from this document when applicable.

Example of part numbers:

MS24612B212 = on-off-on, environmental sealed, locked in center off position.

MS24612F272 = mom-on, off, mom-on, environmental sealed, locked in center off position.

THE MS DASH NUMBERS SUPERSEDE AND ARE COMPLETELY INTERCHANGEABLE WITH THE SUPERSEDED DASH NUMBERS.

MS DASH NO.	SUPERSEDED DASH NO. SEALED		
	TOGGLE	ENVIRON- MENTAL	TOGGLE
212	-21	-21S	-211
222	-22	-22S	-221
232	-23	-23S	-231
242	-24	-24S	-241
262	-26	-26S	-261
272	-27	-27S	-271
282	-28	-28S	-281
292	-29	-29S	-291
302	-30	-30S	-301
312	-31	-31S	-311

INCHES	mm	INCHES	mm
.005	0.13	.432	10.97
.012	0.30	.469	11.91
.047	1.19	.480	12.19
.072	1.83	.734	18.64
.138	3.51	.921	23.39
.250	6.35	1.203	30.56
.430	10.92	1.336	33.93

NOTES:

- Dimensions are in inches.
- Metric equivalents are given for general information only.
- Unless otherwise specified, tolerances are ± 0.010 (0.25 mm) on decimals and $\pm 5^\circ$ on angles.
- For hardware and terminal screw detail specification see appendix of MIL-S-8834.
- For design feature purposes, this standard takes precedence over acquisition documents referenced herein.
- Referenced Government documents of the issue listed in that issue of the Department of Defense Index of Specifications and Standards (DoDISS) specified in the solicitation form a part of this standard to the extent specified herein.
- The superseded dash numbers are inactive for design after 20 Jul 1962.
- Maximum weight: .1132 pound (51.4 grams).
- Altitude requirements 80,000 feet.
- 115 V ac 60 hertz electrical endurance tests are to be performed at room temperature and pressure.
- Unlocking force = 4 ± 1 pound.

APPROVED 18 AUG 60
REVISED: (X) For changes see page 1 of 3

P.A. AIR FORCE-85 Other Cust ARMY-ER NAVY-AS	International Interest ASCCAS 12 / 16A	TITLE SWITCH, TOGGLE, POSITIVE BREAK, LEVER LOCK, ENVIRONMENTALLY SEALED, SCREW TERMINAL, SINGLE POLE, .469 MOUNTING BUSHING, 25 AMPERES	MILITARY STANDARD MS24612
Procurement Specification MIL-S-8834	SUPERSEDES: MS0024612		PAGE 4 OF 4