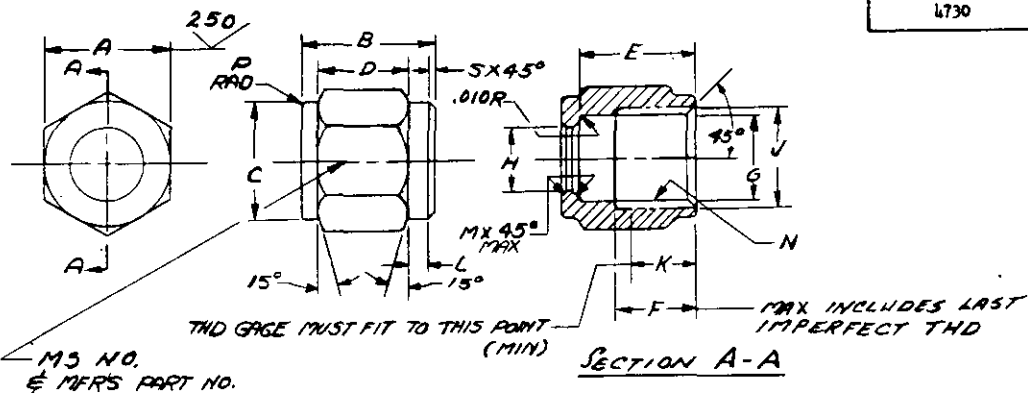


NOTICE—When Government drawings, specifications, or other data are used for any purpose other than in connection with a definitely related Government procurement operation, the United States Government thereby incurs no responsibility, nor any obligation whatsoever, and the fact that the Government may have furnished, furnished, or in any way supplied the said drawings, specifications, or other data is not to be regarded by implication or otherwise as in any manner licensing the holder or any other person or corporation, or conveying any rights or permission to manufacture, use, or sell any patented invention that may in any way be related thereto.



MS PART NO.	A	B	C	D	E	F	G	H	J	K	L	M
MS24592-3	.441-.434	19/32	.437-.427	3/8	.506	.407	.339-.334	.245-.242	3/8	.282	9/64	.005
MS24592-4	.566-.559	1/16	.562-.552	13/32	.532	.450	.394-.388	.308-.305	7/16	.300	1/8	.005
MS24592-5	.628-.621	1/32	.625-.615	1/2	.579	.481	.457-.451	.377-.374	1/2	.331	1/8	.005
MS24592-6	.691-.684	23/32	.687-.677	1/2	.603	.500	.514-.508	.443-.440	9/16	.333	5/32	.010
MS24592-8	.878-.871	27/32	.875-.865	19/32	.723	.563	.694-.688	.573-.570	3/4	.375	5/32	.010
MS24592-10	1.003-.996	31/32	1.000-.990	11/16	.817	.675	.810-.804	.701-.698	7/8	.461	11/64	.010
MS24592-12	1.253-1.246	1-1/64	1.250-1.240	3/4	.868	.719	.986-.979	.837-.834	1-1/16	.469	1/8	.010
MS24592-16	1.503-1.496	1-1/8	1.500-1.490	19/64	.962	.813	1.236-1.229	1.092-1.089	1-5/16	.563	7/32	.010
MS24592-20	2.016-1.984	1-7/32	2.000-1.990	19/64	1.017	.813	1.548-1.541	1.350-1.347	1-5/8	.563	5/16	.010
MS24592-24	2.270-2.230	1-13/32	2.250-2.240	7/8	1.170	.911	1.798-1.791	1.622-1.617	1-7/8	.661	23/64	.010
MS24592-32	2.895-2.855	1-7/8	2.875-2.865	1-5/64	1.462	1.094	2.423-2.416	2.172-2.167	2-1/2	.844	7/16	.015

MS PART NO.	N	P	S
MS24592-3	3/8-24 UNF-3B THD	1/32	.010
MS24592-4	7/16-20 UNF-3B THD	1/32	.010
MS24592-5	1/2-20 UNF-3B THD	1/32	.010
MS24592-6	9/16-18 UNF-3B THD	3/64	.010
MS24592-8	3/4-16 UNF-3B THD	3/64	.010
MS24592-10	7/8-14 UNF-3B THD	3/64	.010
MS24592-12	1-1/16-12 12UN-3B THD	1/16	.010
MS24592-16	1-5/16-12 12UN-3B THD	5/64	.010
MS24592-20	1-5/8-12 12UN-3B THD	3/32	.010
MS24592-24	1-7/8-12 12UN-3B THD	3/32	.010
MS24592-32	2-1/2-12 12UN-3B THD	7/32	.015

MS24592-3, -4, -5, and -6 SHALL BE STEEL.  
MS24592-8 AND ABOVE MAY BE ALUMINUM ALLOY OR STEEL.

BREAK ALL SHARP EDGES AND REMOVE ALL HANGING BURRS AND SLIVERS THAT MIGHT BECOME DISLODGED UNDER USAGE.

DIMENSIONS IN INCHES. UNLESS OTHERWISE SPECIFIED, TOLERANCES: ANGLES  $\pm 1^\circ$ , DECIMALS  $\pm .005$ , FRACTIONS  $\pm 1/64$ .

THIS STANDARD TAKES PRECEDENCE OVER DOCUMENTS REFERENCED HEREIN.

REFERENCED DOCUMENTS SHALL BE OF THE ISSUE IN EFFECT ON DATE OF INVITATIONS FOR BID.

THIS PART IS A COMPONENT OF MS24587.

SURFACE ROUGHNESS PER MIL-STD-10

**(A) CANCELLED - NO SUPERSEDING STANDARD**

P.A. AIR FORCE Other Cust	TITLE MUT, TUBE COUPLING - HOSE TO TUBE REUSABLE, HYDRAULIC, PNEUMATIC, FUEL AND OIL LINES	MILITARY STANDARD <b>MS 24592</b> (USAF)
PROCUREMENT SPECIFICATION MIL-A-5070	SUPERSEDES:	SHEET 1 OF 1

DD FORM 672-1 (Limited coordination)

PREVIOUS EDITIONS OF THIS FORM ARE OBSOLETE.