

INCH-POUND

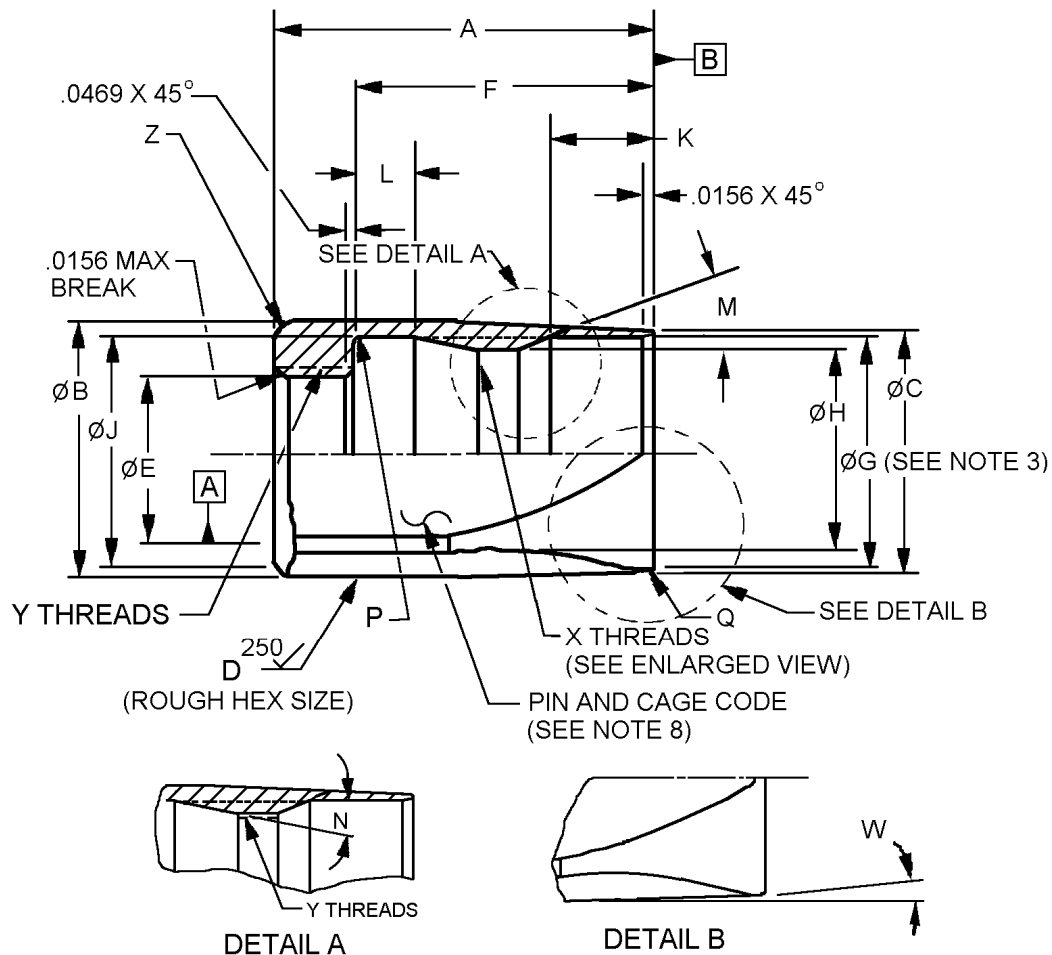
MS24591D
 14 May 2007
 SUPERSEDING
 MS24591C
 22 September 2000

DETAIL SPECIFICATION SHEET

SOCKET, ADAPTER, HOSE TO TUBE, REUSABLE, HYDRAULIC,
 FUEL AND OIL LINES, 1 THROUGH 2 INCHES TUBING SIZES

This specification is approved for use by all Departments and
 Agencies of the Department of Defense.

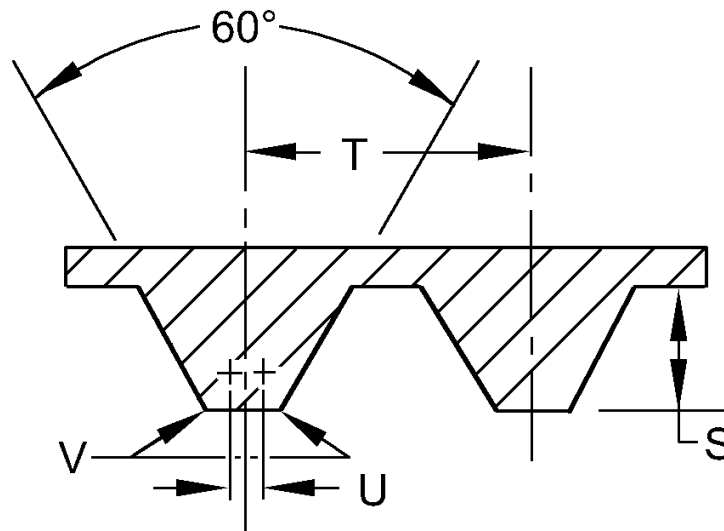
The requirements for acquiring the product described herein shall consist of this specification sheet
 and MIL-DTL-5070.



Inches	mm
.0156	0.396
.0469	1.191

FIGURE 1. Socket dimensions and configuration.

MS24591D



ENLARGED VIEW OF THREAD X

DETAIL C

Dash number	A inches (mm)	B inches (mm)	C inches (mm)	D inches (mm)	E inches (mm)	F inches (mm)	G inches (mm)	H inches (mm)	J inches (mm)
-16	1.671 (42.44)	1.546 (39.27)	1.421 (36.09)	1.453 (36.91)	1.015 (25.78)	1.280 (32.51)	1.290 (32.77)	1.175 (29.85)	1.340 (34.04)
	1.651 (41.94)	1.516 (38.51)	1.391 (35.33)	1.423 (36.14)	1.002 (25.45)	1.260 (32.00)			1.330 (33.78)
-20	1.760 (44.70)	1.921 (48.79)	1.765 (44.83)	1.765 (44.83)	1.265 (32.13)	1.373 (34.87)	1.555 (39.50)	1.430 (36.32)	1.560 (39.62)
	1.740 (44.20)	1.891 (48.03)	1.735 (44.07)	1.735 (44.07)	1.252 (31.80)	1.353 (34.37)			1.550 (39.37)
-24	1.860 (47.24)	2.124 (53.95)	1.937 (49.20)	1.953 (49.61)	1.515 (38.48)	1.465 (37.21)	1.800 (45.72)	1.675 (42.55)	1.810 (45.97)
	1.830 (46.48)	2.094 (53.19)	1.907 (48.44)	1.923 (48.84)	1.502 (38.15)	1.445 (36.70)			1.795 (45.59)
-32	2.270 (57.66)	2.640 (67.06)	2.460 (62.48)	2.460 (62.48)	1.948 (49.48)	1.860 (47.24)	2.290 (58.17)	2.160 (54.86)	2.330 (59.18)
	2.230 (56.64)	2.600 (66.04)	2.420 (61.47)	2.420 (61.47)	1.940 (49.28)	1.820 (46.23)			2.315 (58.80)

FIGURE 1. Socket dimensions and configuration - Continued.

MS24591D

Dash number	K	L	M	N	P	Q	S	T	U
	inches (mm)	inches (mm)			inches (mm)	inches (mm)	inches (mm)	inches (mm)	inches (mm)
-16	.300 (7.62)	.280 (7.11) .270 (6.86)	20°	15°	.062 (1.57) .032 (.81)	.046 (1.17) .016 (.41)	.0575 (1.46)	.166 (4.22)	.000 (.00)
-20	.350 (8.89)	.255 (6.48) .245 (6.22)				.077 (1.96) .047 (1.19)	.0625 (1.59)		
-24	.000	.455 (11.56) .445 (11.30)	8°	25°					
-32	.250 (6.35)	.520 (13.21) .480 (12.19)	12.5°	15°	.070 (1.78) .030 (.76)	.050 (1.27) .010 (.25)	.0620 (1.57)	.200 (5.08)	.022 (.56) .012 (.30)

Dash number	V inches (mm)	W	X LH-Round thread (see note 7)	Y (see note 7)	PD	Z inches (mm)
-16	.031 (0.79)	3.5°	1.290-6	1.0625-18 UNEF-2B	---	.109 (2.77) .079 (2.01)
-20		4°	1.555-6	1.3125-18 UNEF-2B	---	.140 (3.56) .110 (2.79)
-24		4.5°	1.800-6	1.5625-18 UNEF-2B	---	.156 (3.96)
-32	.018 (0.46)		2.285-5	2.0000-18 UNS-2B	1.9706 1.9639	.180 (4.57) .140 (3.56)

NOTES:

1. Dimensions are in inches
2. Metric equivalents are for information only.
3. Thread marks on diameter G shall not be cause for rejection.
4. Unless otherwise specified, tolerances are as follows: angles $\pm 1^\circ$, decimals $\pm .005$ inch (0.13 mm).
5. Break all sharp edges and remove all burrs and slivers.
6. Unless otherwise specified, maximum surface roughness shall be 125 μ in R_a in accordance with ASME B46.1.
7. Except round threads, threads shall be in accordance with MIL-S-7742.
8. Part or Identifying Number (PIN).

FIGURE 1. Socket dimensions and configuration - Continued.

MS24591D

REQUIREMENTS:

Dimensions and configurations: The design, construction, and physical dimensions shall be in accordance with MIL-DTL-5070 and figure 1 in case of conflict between this drawing and MIL-DTL-5070, this drawing shall govern.

Intended use. This part is a component of MS24587, MS27224, MS27226, MS27228, MS27230, and MS27232.

Material: Aluminum in accordance with MIL-DTL-5070.

Finish: Finish shall be in accordance with MIL-DTL-5070.

Color identification: Color identification shall be in accordance with MIL-DTL-5070.

PIN example:

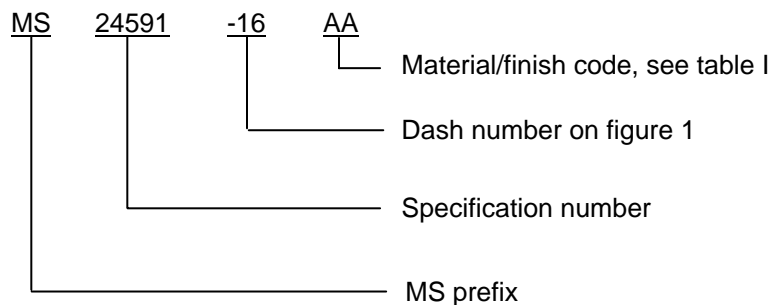


TABLE I. Code for material and finish.

Code	Dash size	Material/finish
AA	-16 through -32	Aluminum – anodic coating

Marking: The PIN and the manufacturer's Commercial and Government Entity (CAGE) Code or trademark shall be marked on the socket or a removable tag securely attached to the socket.

Changes from previous issue. Marginal notations are not used in this revision to identify changes with respect to the previous issue, due to the extent of the changes.

Referenced documents. In addition to MIL-DTL-5070, this document references the following:

MIL-S-7742	MS27228
MS24587	MS27230
MS27224	MS27232
MS27226	ASME B46.1

MS24591D

CONCLUDING MATERIAL

Custodians:

Army - AT
Navy - AS
Air Force - 99
DLA - CC

Preparing activity:

DLA - CC

(Project 4730-2005-041)

Review activities:

Army - AV
Navy - MC, SA
Air Force - 11, 71

NOTE: The activities listed above were interested in this document as of the date of this document. Since organizations and responsibilities can change, you should verify the currency of the information above using the ASSIST Online database at <http://assist.daps.dla.mil>.