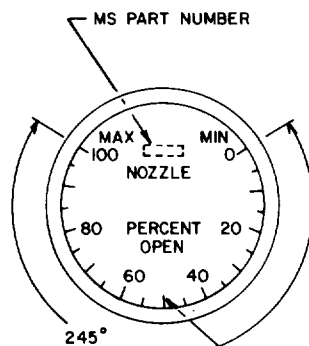
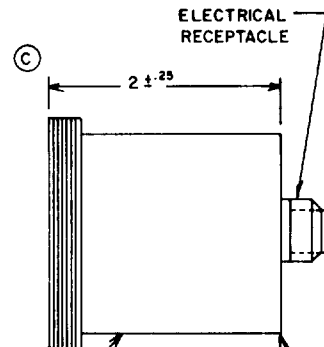


FED. SUP CLASS
6620

| CAL MARKS | SETTING (DEG) | CONTINUED | |
|--------------|------------------|--------------|------------------|
| | | CAL MARKS | SETTING (DEG) |
| 0 | 0 | — | 134.75 |
| — | 12.25 | — | 147.0 |
| — | 24.50 | — | 159.75 |
| — | 36.75 | — | 171.50 |
| 20 | 49.0 | — | 183.75 |
| — | 61.25 | — | 196.0 |
| — | 73.50 | 80 | 208.25 |
| — | 85.75 | — | 220.50 |
| 40 | 98.0 | — | 232.75 |
| — | 110.25 | — | 245.0 |
| — | 122.50 | 100 | 245.0 |



| MS PART NO. | INTEGRAL LIGHT |
|--------------|----------------|
| * MS 24572-1 | RED |
| * MS 24572-2 | WHITE |
| Ⓢ MS 24572-3 | RED |
| MS 24572-4 | WHITE |

- Ⓢ CANCELLED, SUPERSEDED BY ~~MS 24572-3~~ AND MS 24572-4.
~~MS 24572-3~~ AND MS 24572-4 PARTS CAN REPLACE THE CANCELLED
 MS 24572-1 AND MS 24572-2 RESPECTIVELY. THE CANCELLED MS 24572-1
 AND MS 24572-2 PARTS CANNOT ALWAYS REPLACE THE ~~MS 24572-3~~.
 AND MS 24572-4 PARTS AND SHOULD BE USED UNTIL EXISTING STOCK
 IS DEPLETED. USE ONLY THE SUPERSEDING MS PARTS OF THE SAME DASH
 NUMBERS FOR DESIGN AND REPLACEMENT.

DIMENSIONS IN INCHES.

FOR DESIGN FEATURE PURPOSES, THIS STANDARD TAKES PRECEDENCE
 OVER PROCUREMENT DOCUMENTS REFERENCED HEREIN.

REFERENCED DOCUMENTS SHALL BE OF THE ISSUE IN EFFECT ON
 DATE OF INVITATIONS FOR BID.

DISTRIBUTION STATEMENT A. Approved for public release; distribution is unlimited.
 AMSC N/A

This military standard is approved for use within the Department of the Air Force, and
 is available for use by all Departments and Agencies of the Department of Defense.

| | | | | |
|---|---------------------------|--|---|----|
| RA Ⓢ AIR FORCE - 71 Other Cust AIR FORCE - 99 | INTERNATIONAL INTEREST | TITLE INDICATOR - POSITION VARIABLE NOZZLE | MILITARY STANDARD MS 24572 (USAF) | |
| PROCUREMENT SPECIFICATION MIL-I-27191 | | SUPERSEDES: | SHEET | OF |

DD FORM 672-1 (LIMITED COORDINATION)

PREVIOUS EDITIONS OF THIS FORM ARE OBSOLETE

6620-F439

DATE

DRAWN BY *John J. Smith* 7-11-60TYPED BY *John J. Smith*CHECKED BY *John J. Smith* 7-11-60

NOTES TO PRINTER: REDUCE BORDER TO 6-27 32 X 9-3 4. PRINT 1:1:1
 BORDER LINE ONE INCH FROM LEFT EDGE OF 8 X 10-1 2 SHEET. PRINT
 BOTTOM BORDER LINE 3/8 INCH FROM BOTTOM EDGE OF 8 X 10-1 2 SHEET.
 SIGNATURE FORM NOT TO BE INCLUDED ON 8 X 10-1 2 SHEET.

APPROVED 27 MAY 1959 REVISED (A) 6 JULY 1960 (B) 25 APR 1961 (C) 30 September 1988