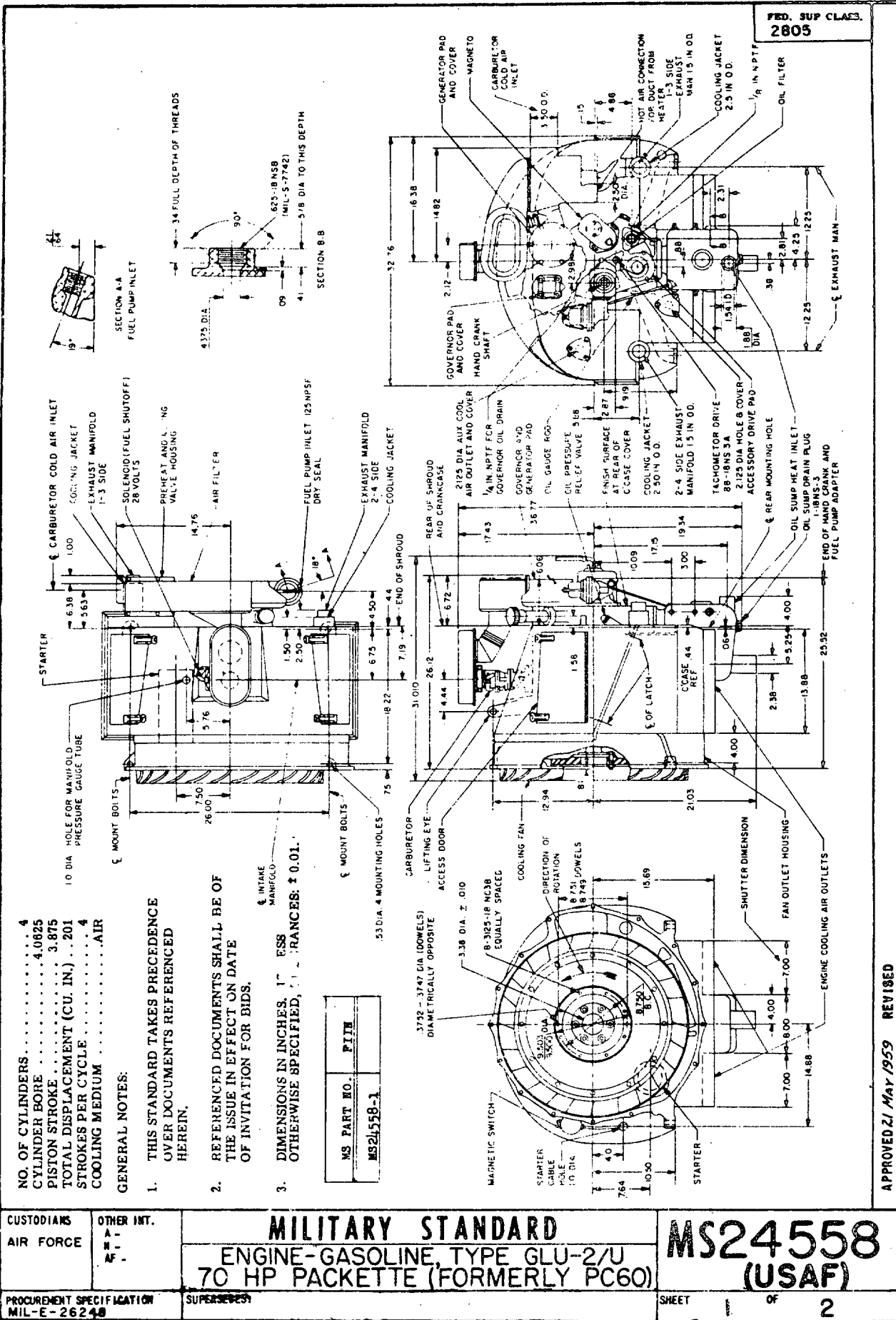
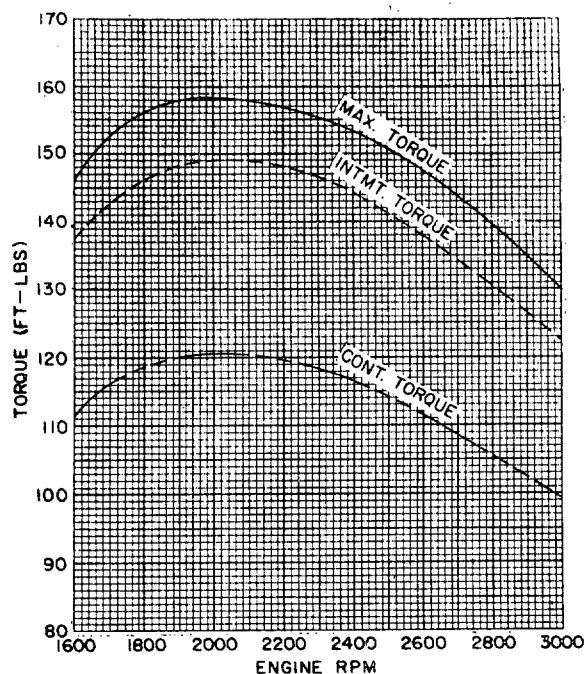
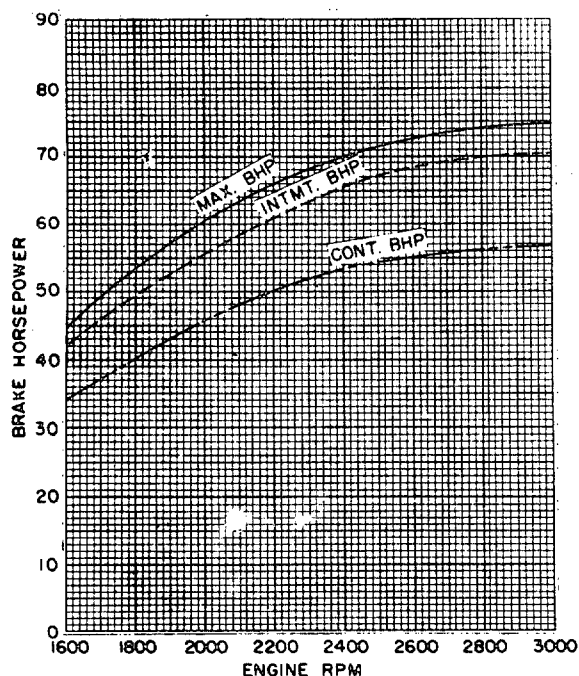


NOTICE: When Government drawings, specifications, or other data are used for any purpose other than in connection with a definitely related Government procurement operation, the United States Government thereby incurs no responsibility, nor any obligation whatsoever; and the fact that the Government may have furnished, furnished, or in any way supplied the said drawings, specifications, or other data is not to be regarded by implication or otherwise as in any manner licensing the holder or any other person or corporation, or conveying any rights or permission to manufacture, use, or sell any patented invention that may in any way be related thereto.



**NOTES:** When Government drawings, specifications, or other data are used for any purpose other than in connection with a definitely related Government acquisition, the United States Government hereby incurs no responsibility, nor any obligation whatsoever; and the fact that the Government may have furnished such data does not constitute an authorization or endorsement by it of the views or opinions expressed, or the results obtained therefrom.



## NOTES

1. DATA CORRECTED TO STANDARD CONDITIONS (29.92 IN. HG, 60°F).
2. MAXIMUM HORSEPOWER AND MAXIMUM TORQUE AT WIDE OPEN THROTTLE.
3. CONTINUOUS DUTY PERFORMANCE CURVES APPLICABLE AT 6000 FT ALTITUDE.

## PERFORMANCE SPECIFICATIONS

FULL THROTTLE BRAKE HORSEPOWER RATINGS			CRANKSHAFT SPEED IN RPM			FULL THROTTLE PERFORMANCE AT RATED RPM UNDER RATED LOAD		
MAXIMUM AT SEA LEVEL	ITMT DUTY	CONT DUTY	FULL RATED	THROTTLE GOVERNED	NO LOAD IDLING	INT MANIFOLD VACUUM (IN. HG)	FUEL CONS. (LB/HR)	SPECIFIC OIL CONS. (LB/BHP/HR)
70	65.8	53.2	2400	1400-2800	800-900	0.9 TO 1.4	43 TO 47	0.012

## FUEL SPECIFICATIONS

SPECIFICATION NUMBER	GRADES FOR AMBIENT TEMPERATURE RANGES		MINIMUM OCTANE RATING
	ABOVE 0°F	BELOW 0°F	
MIL-G-5572	80 - 145	80 - 145	80
MIL-G-3056	TYPE I	TYPE II	80
VV-M-561			80

## LUBRICATING OIL SPECIFICATIONS

SPECIFICATION NUMBER	VISCOSITY GRADES FOR AMBIENT TEMPERATURE RANGES	
	ABOVE 20°F	BELOW 20°F*
MIL-L-2104	30	10
SAE GRADE	30	10

\* WHEN DAILY TEMPERATURES RANGE ABOVE AND BELOW 20°F, USE HIGHER VISCOSITY.

## WEIGHTS

TOTAL DRY WEIGHT (MAXIMUM)..... 458.0 LB

### ACCESSORIES INCLUDED

ELECTRIC CRANKING MOTOR . . . . .	24 VOLT
FUEL PUMP, ENGINE DRIVEN . . . . .	4-5.75 PSI
CARBURETOR . . . . .	1 BARREL
MAGNETO, RADIO SHIELDED . . . . .	1
IGNITION CABLES, RADIO SHIELDED . . . . .	5 MM.
SPARK PLUGS, RADIO SHIELDED . . . . .	18 MM.

## CAPACITIES

OIL SUMP CAPACITY (U.S. QUARTS) . . . . . 8

## RELATED DOCUMENTS

CONTINENTAL MOTORS CORP. DRAWING NO. . . . 627259

CUSTODIANS AIR FORCE	OTHER INT. A - C - AF -	MILITARY STANDARD	MS24558 (USAF)
		ENGINE-GASOLINE, TYPE GLU-2/U 70 HP PACKETTE (FORMERLY PC60)	
FEDERAL IT SPECIFICATION MIL-E-26248		SUPERSEDES:	SHEET 2 OF 2

FD FORM 672-1  
1 OCT 62

GPO 823747

APPROVED 21 MAY 1959 REVISED