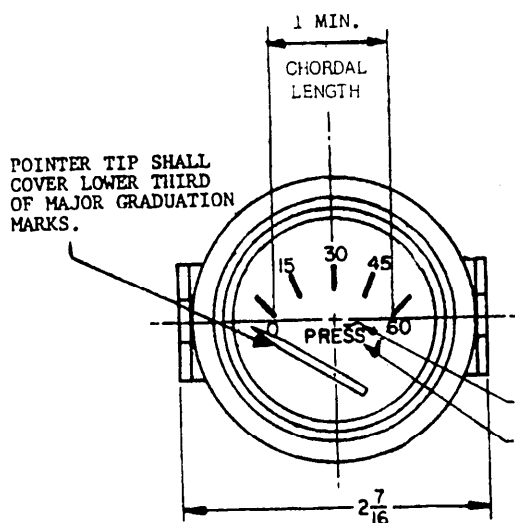
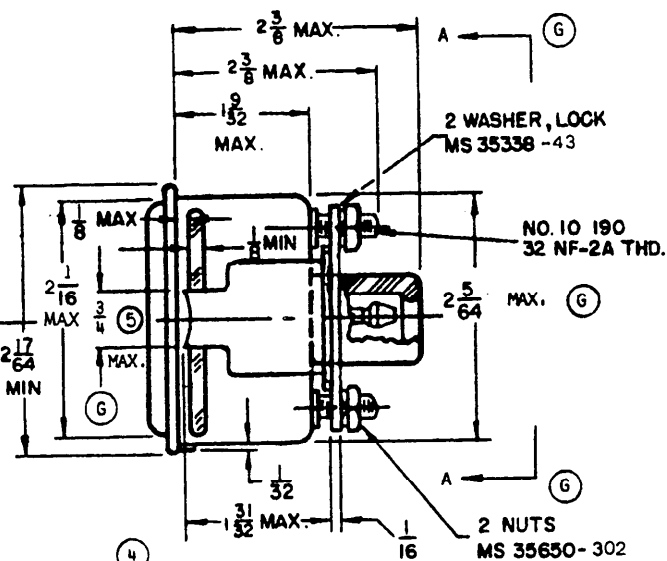


FED. SUP CLASS
6685USER ACTIVITIES:
ARMY-ME; NAVY-YD, MCREVIEWER ACTIVITIES:
ARMY-ER, DLA-GS

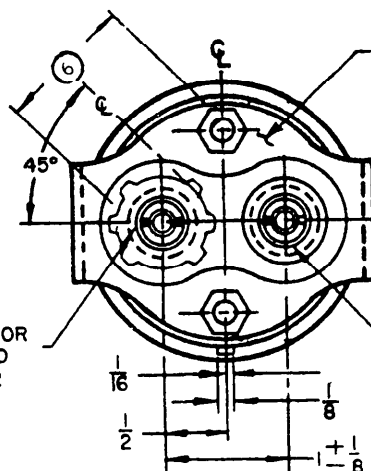
This military standard is approved for use by all Departments and Agencies of the Department of Defense. Selection for all new engineering and design applications and for repetitive use shall be made from this document when applicable.

APPROX
MARKING
LOCATION
LOCATION
OPTIONAL

MOUNTING CLAMP CONFIGURATION OPTIONAL

CONNECTOR
MS 33800
STYLE 2
(SENDER)

(G)



VIEW A-A

(G)

CONNECTOR
MS 33800
STYLE 1
(IGNITION)

(G)

CALIBRATION DATA (3)	
RESISTANCE OHMS	INDICATOR READING
0	0
15	30
30	60

MS PART NO	DIAL TYPE	FORMER PART NO
MS 24541-1	CANCELLED (1)	
MS 24541-2	NON-LUMINOUS	8376486

(G) DENOTES CHANGES

P.A. ARMY-AT

Other Cust

AF-99

PROCUREMENT SPECIFICATION
MIL-I-10986

TITLE

INDICATOR, PRESSURE:
24 VOLT, DC, RANGE 0-60 PSI

SUPERSEDES:

MILITARY STANDARD

MS 24541

SHEET 1 OF 2

APPROVED 27 OCTOBER 1958 REVISED (E) 11 SEPTEMBER 1978 (G) 25 SEP 1980

FED. SUP CLASS
6685

REQUIREMENTS:

1. REPLACEMENT DATA: MS24541-2 IS THE REPLACEMENT FOR MS24541-1.
2. TYPE III (PRESSURE) UNIT 1 (INDICATOR) OF PROCUREMENT SPECIFICATION.
- (G) 3. MUST OPERATE LINEARLY AND ACCURATELY WHEN PROPERLY CONNECTED IN A CIRCUIT WITH ASSOCIATED TRANSMITTER, MS24538.
- (G) 4. RELATIVE LOCATION AND CONFIGURATION OF CONNECTORS AND MOUNTING CLAMP IS OPTIONAL, PROVIDED THAT DIAL ILLUMINATION IS NOT ADVERSELY AFFECTED.
5. MOUNTING CLAMP TIPS SHALL BE SHARP TO ASSURE GROUNDING.
6. FOUR (4) ILLUMINATING WINDOWS, 1-5/32 MINIMUM CHORDAL LENGTH, EQUALLY SPACED 45° OFF HORIZONTAL CENTERLINE (360° ILLUMINATING WINDOW OPTIONAL).
- (G) 7. UNLESS OTHERWISE SPECIFIED, STEEL PARTS SHALL BE ZINC PLATED, TYPE II, CLASS 3 OF SPECIFICATION QQ-Z-325, OR TYPE II, CLASS 3 OF MIL-C-81562.
8. CENTERLINE OF DIAL FACE SHALL BE WITHIN $\pm 2^\circ$ OF INDICATOR VERTICAL AXIS. VERTEX OF ANGULAR DIMENSIONS IS LOCATED AT POINTER PIVOT.
9. THREADS SHALL BE IN ACCORDANCE WITH FED-STD-H28/2.
10. UNLESS OTHERWISE SPECIFIED, DIMENSIONS ARE IN INCHES; TOLERANCES ARE $\pm 1/64$ ON FRACTIONS, $\pm 1^\circ$ ON ANGULAR DIMENSIONS.
11. MARKING SHALL CONSIST OF THE MS PART NUMBER AND MANUFACTURER'S IDENTIFICATION IN ACCORDANCE WITH MIL-STD-130.

NOTES:

1. THIS STANDARD IS NOT INTENDED TO LIMIT CONSTRUCTION TO FEATURES OTHER THAN AS SHOWN HEREON BY DIMENSIONS, NOTATIONS, AND REFERENCED DOCUMENTS.
2. REFERENCED DOCUMENTS SHALL BE OF THE ISSUE IN EFFECT ON DATE OF INVITATION FOR BIDS OR REQUEST FOR PROPOSAL, EXCEPT THAT REFERENCED ADOPTED INDUSTRY DOCUMENTS SHALL GIVE THE DATE OF THE ISSUE ADOPTED.
3. FOR DESIGN FEATURE PURPOSES, THIS STANDARD TAKES PRECEDENCE OVER PROCUREMENT DOCUMENTS REFERENCED HEREIN.

APPROVED 27 OCTOBER 1958 REVISED (G) FOR CHANGES SEE SHEETS 1 & 2

P.A. Other Cust	TITLE INDICATOR, PRESSURE 24 VOLT, DC, RANGE 0-60 PSI	MILITARY STANDARD
PROCUREMENT SPECIFICATION	SUPERSEDES:	MS24541 SHEET 2 OF 2