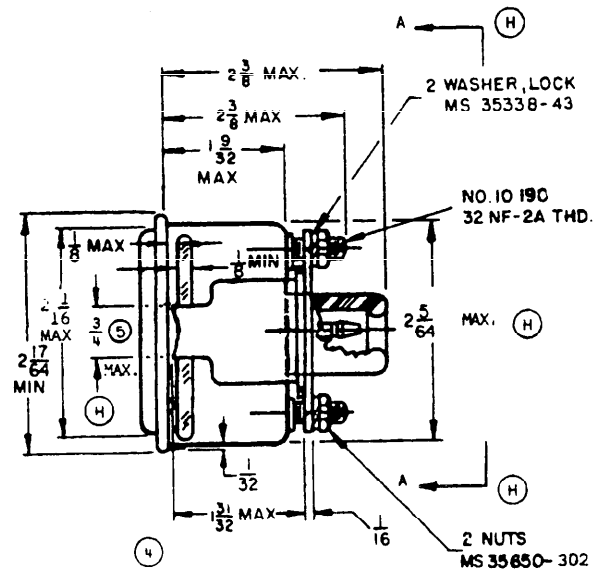
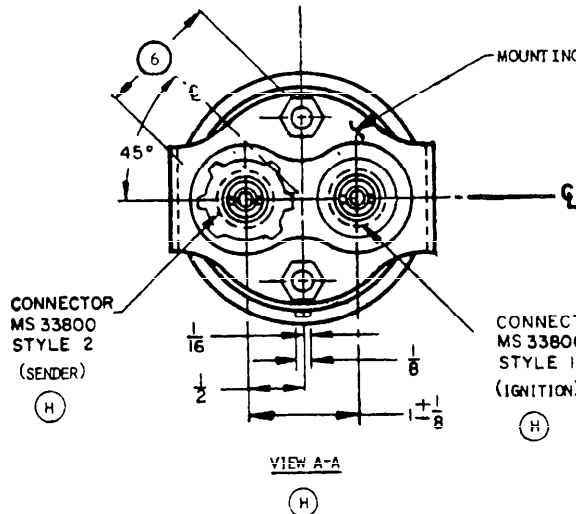
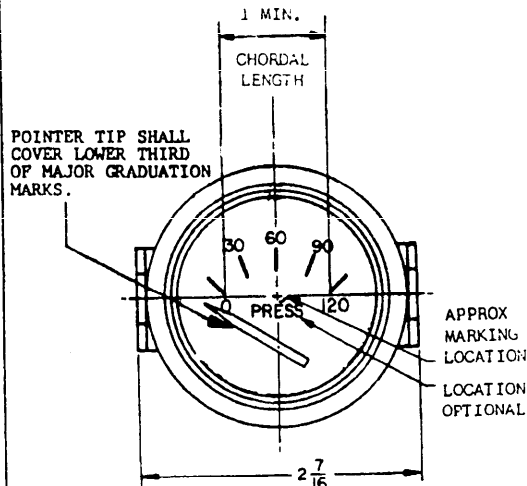


FED. SUP CLASS  
6685USER ACTIVITIES:  
ARMY-ME; NAVY-YD, MCREVIEWER ACTIVITIES:  
ARMY-ER, DLA-6S

This military standard is approved for use by all Departments and Agencies of the Department of Defense. Selection for all new engineering and design applications and for repetitive use shall be made from this document when applicable.



CALIBRATION DATA (3)	
RESISTANCE OHMS	INDICATOR READING
0	0
15	60
30	120

MS PART NO	DIAL TYPE	
MS 24540-1	CANCELLED (1)	
MS 24540-2	NON-LUMINOUS	

(H) DENOTES CHANGES

P.A. ARMY-AT

Other Cust

AF-99

PROCUREMENT SPECIFICATION  
MIL-I-10985

TITLE

INDICATOR, PRESSURE  
24 VOLT, DC, RANGE 0-120 PSI

SUPERSEDES:

MILITARY STANDARD

MS24540

SHEET 1 OF 2

DD FORM 672-1 (Coordinated)

PREVIOUS EDITIONS OF THIS FORM ARE OBSOLETE.

6685-0628

APPROVED 27 OCTOBER 1958 REVISED (E) 10 OCTOBER 1975 (G) 11 SEPTEMBER 1978 (H) 25 SEP 1980

FED. SUP CLASS  
6685

## REQUIREMENTS:

1. REPLACEMENT DATA: MS24540-2 IS THE REPLACEMENT FOR MS24540-1.
2. TYPE III (PRESSURE) UNIT 1 (INDICATOR) OF PROCUREMENT SPECIFICATION.
- (H) 3. MUST OPERATE LINEARLY AND ACCURATELY WHEN PROPERLY CONNECTED IN A CIRCUIT WITH ASSOCIATED TRANSMITTER, MS24539.
- (H) 4. RELATIVE LOCATION AND CONFIGURATION OF CONNECTORS AND MOUNTING CLAMP IS OPTIONAL, PROVIDED THAT DIAL ILLUMINATION IS NOT ADVERSELY AFFECTED.
5. MOUNTING CLAMP TIPS SHALL BE SHARP TO ASSURE GROUNDING.
6. FOUR (4) ILLUMINATING WINDOWS, 1-5/32 MINIMUM CHORDAL LENGTH, EQUALLY SPACED 45° OFF HORIZONTAL CENTERLINE (360° ILLUMINATING WINDOW OPTIONAL).
- (H) 7. UNLESS OTHERWISE SPECIFIED, STEEL PARTS SHALL BE ZINC PLATED, TYPE II, CLASS 3 OF QQ-Z-325, OR TYPE II, CLASS 3 OF MIL-C-81562.
8. CENTERLINE OF DIAL FACE SHALL BE WITHIN  $\pm 2^\circ$  OF INDICATOR VERTICAL AXIS. VERTEX OF ANGULAR DIMENSIONS IS LOCATED AT POINTER PIVOT.
9. THREADS SHALL BE IN ACCORDANCE WITH FED-STD-H28/2.
10. UNLESS OTHERWISE SPECIFIED, DIMENSIONS ARE IN INCHES; TOLERANCES ARE  $\pm 1/64$  ON FRACTIONS,  $\pm 1^\circ$  ON ANGULAR DIMENSIONS.
11. MARKING SHALL CONSIST OF THE MS PART NUMBER AND MANUFACTURER'S IDENTIFICATION IN ACCORDANCE WITH MIL-STD-130.

## NOTES:

1. THIS STANDARD IS NOT INTENDED TO LIMIT CONSTRUCTION TO FEATURES OTHER THAN AS SHOWN HEREON BY DIMENSIONS, NOTATIONS, AND REFERENCED DOCUMENTS.
2. REFERENCED DOCUMENTS SHALL BE OF THE ISSUE IN EFFECT ON DATE OF INVITATION FOR BIDS OR REQUEST FOR PROPOSAL, EXCEPT THAT REFERENCED ADOPTED INDUSTRY DOCUMENTS SHALL GIVE THE DATE OF THE ISSUE ADOPTED.
3. FOR DESIGN FEATURE PURPOSES, THIS STANDARD TAKES PRECEDENCE OVER PROCUREMENT DOCUMENTS REFERENCED HEREIN.

APPROVED 27 OCTOBER 1958 REVISED (H) FOR CHANGES SEE SHEETS 1 &amp; 2

P.A. Other Cust	TITLE INDICATOR, PRESSURE 24 VOLT, DC, RANGE 0-120 PSI	MILITARY STANDARD <b>MS24540</b>
PROCUREMENT SPECIFICATION	SUPERSEDES:	SHEET 2 OF 2