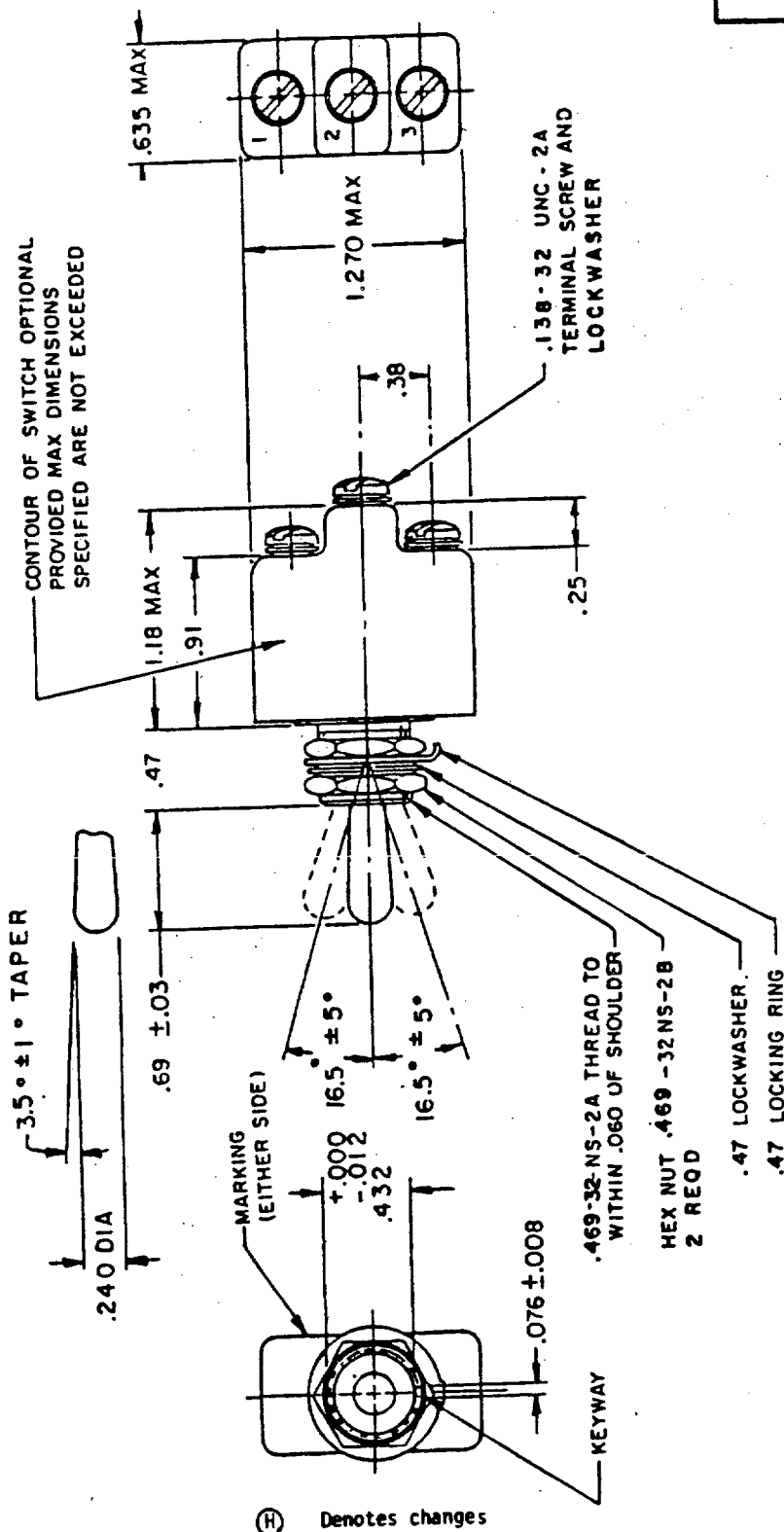


FED. SUP CLASS  
5930

User activity: Air Force - 11

Review activities: Army - AV  
Navy - EC  
Air Force - 99  
DLA - ES

is military standard is approved for use by all Departments and Agencies of the Department of Defense. Selection for all new engineering and design applications and for repetitive use shall be made from this document when applicable.



(H) Denotes changes

P.A Air Force - 85  Other Cust Army - ER Navy - AS	International Interest	TITLE	MILITARY STANDARD
		SWITCH, TOGGLE, ONE POLE, ENVIRONMENTALLY SEALED	MS24523
Procurement Specification MIL-S-3950		SUPERSEDES:	PAGE 1 OF 3

APPROVED 31 Jul 1958 REVISED 20 Apr 1967 (E) 16 Sep 1969 (E) 22 Apr 1971 (G) 17 May 1977 (H) 28 Sep 1987

FED. SUP CLASS  
5930

User activity: Air Force - 11

Review activities: Army - AV  
Navy - EC  
Air Force - 99  
DLA - ES

This military standard is approved for use by all Departments and Agencies of the Department of Defense. Selection for all new engineering and design applications and for repetitive use shall be made from this document when applicable.

Inches	mm	Inches	mm
.005	0.13	.25	6.4
.008	0.20	.38	9.7
.012	0.30	.432	10.97
.02	0.5	.469	11.91
.03	0.8	.47	11.9
.060	1.52	.635	16.13
.076	1.93	.69	17.5
.138	3.51	.91	23.1
.240	6.10	1.18	30.0
		1.270	32.26

NOTES:

1. Dimensions are inches.
- (H) 2. Metric equivalents are given for general information only.
3. Unless otherwise specified, tolerance is  $\pm 0.020$  (0.51 mm) for two place decimals and  $\pm 0.005$  (0.13 mm) for three place decimals.
4. For hardware and terminal screw detail specifications, see appendix of MIL-S-3950.
5. Thread length and hole depth should be such that screws will not bottom when tightened.
6. All switches on this standard are designed so that the movement of the switch mechanism is opposite to that of the toggle lever.
7. Maximum weight is .20 pound.
- (H) 8. In event of a conflict between the text of this standard and the reference cited herein, the text of this standard shall take precedence.
- (H) 9. Referenced Government documents of the issue listed in that issue of the Department of Defense Index of Specifications and Standards (DODISS) specified in the solicitation form a part of this standard to the extent specified herein.

APPROVED 31 Jul 1958 REVISED (H) For changes see page 2.

P.A Air Force - 85  Other Cust Army - ER Navy - AS	International Interest	TITLE	MILITARY STANDARD
		SWITCH, TOGGLE, ONE POLE, ENVIRONMENTALLY SEALED	MS24523
Procurement Specification MIL-S-3950		SUPERSEDES:	PAGE 2 OF 3

User activity: Air Force - 11

Review activities: Army - AV  
Navy - EC  
Air Force - 99  
DLA - ES

This military standard is approved for use by all Departments and Agencies of the Department of Defense. Selection for all new engineering and design applications and for repetitive use shall be made from this document when applicable.

FED. SUP CLASS  
5930

Detail requirements:

MS part number	Circuit with toggle lever in		Current capacity (amperes) 28 volts dc			Current capacity (amperes) 115 volts, 60 and 400 hertz ac		
	Keying side	Center keying side	Lamp-load circuit	Resistive circuit	Inductive circuit	Lamp-load circuit	Resistive circuit	Inductive circuit
MS24523-21	1-2 On	Off	2-3 On					
MS24523-22	Off	None	2-3 On	5	15	3	15	10
MS24523-23	1-2 On	None	2-3 On					
MS24523-24	None	Off	2-3 On					
MS24523-25	None	Mom. off	2-3 On					
MS24523-26	1-2 Mom. on	None	2-3 On					
MS24523-27	1-2 Mom. on	Off	2-3 Mom. on					
MS24523-28	1-2 Mom. on	Off	None					
MS24523-29	Mom. off	None	2-3 On	4	10	2	15	7
MS24523-30	1-2 Mom. on	None	Off					
MS24523-31	1-2 Mom. on	Off	2-3 On					
MS24523-32	None	On 1-2	2-3 Mom. on					
MS24523-33	None	On 1-2	2-3 On	5	20	3	15	10

P.A. Air Force - 85 Other Cust Army - ER Navy - AS	International Interest	TITLE  SWITCH, TOGGLE, ONE POLE, ENVIRONMENTALLY SEALED	MILITARY STANDARD  MS24523
Procurement Specification MIL-S-3950	SUPERSEDES:		PAGE 3 OF 3

DD FORM 672 (Coordinated) PREVIOUS EDITIONS OF THIS FORM ARE OBSOLETE  
1 MAY 73

APPROVED 31 Jul 1958 REVISED (H) For changes see page 2.