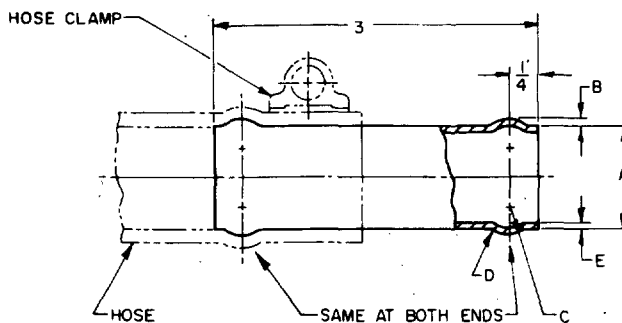


REVIEW ACTIVITIES: ARMY-WC, ME; DSA-CS
USER ACTIVITIES: ARMY-MU, AV; NAVY-OS, MC



STEEL MS DASH NO.	ALUMINUM MS DASH NO.	HOSE I. D.	A DIA ±.005	B ±.003	C RAD +0 -1/64	D RAD +0 -1/64	E +.002 -.004
1	2	1/4	.250	.038	1/8	1/16	.035
3	4	3/8	.375	.038	1/8	1/16	.035
5	6	1/2	.500	.038	1/8	1/16	.035
7	8	5/8	.625	.038	1/8	1/16	.049
9	10	3/4	.750	.038	1/8	1/16	.049
11	12	1	1.000	.062	5/32	3/32	.049
13	14	1-1/4	1.250	.062	5/32	3/32	.049
15	16	1-1/2	1.500	.072	5/32	3/32	.049

NOTES:

- MATERIAL: TUBE
 - STEEL, CORROSION RESISTANT, SEAMLESS OR WELDED, CONDITION A, MIL-T-8606.
 - ALUMINUM ALLOY 5052, H34, WW-T-700/4.
OPTIONAL: ALUMINUM ALLOY 6061, T6, WW-T-700/6.
- PROTECTIVE FINISH: ALUMINUM ONLY, ANODIZE, MIL-A-8625, TYPE I.
- UNLESS OTHERWISE SPECIFIED, DIMENSIONS ARE IN INCHES AND TOLERANCES ARE $\pm 1/32$ ON FRACTIONS.
- REFERENCED DOCUMENTS SHALL BE OF THE ISSUE IN EFFECT ON DATE OF INVITATION FOR BIDS.
- FOR DESIGN FEATURE PURPOSES, THIS STANDARD TAKES PRECEDENCE OVER PROCUREMENT DOCUMENTS REFERENCED HEREIN.
- THIS STANDARD IS NOT INTENDED TO LIMIT CONSTRUCTION TO FEATURES OTHER THAN AS SHOWN HEREON BY DIMENSIONS, NOTATIONS, AND REFERENCED DOCUMENTS.
- THE MS PART NUMBER SHALL CONSIST OF THE MS NUMBER, PLUS THE DASH NUMBER. EXAMPLE: MS24520-1.
- MARKING SHALL CONSIST OF THE MS PART NUMBER AND THE MANUFACTURER'S IDENTIFICATION IN ACCORDANCE WITH MIL-STD-130.

(A) ENTIRE STANDARD REVISED

P.A. ARMY-AT Other Cust NAVY-AS AF-69	TITLE MENDER, HOSE (LOW PRESSURE)	MILITARY STANDARD MS24520
PROCUREMENT SPECIFICATION NONE	SUPERSEDES:	SHEET OF