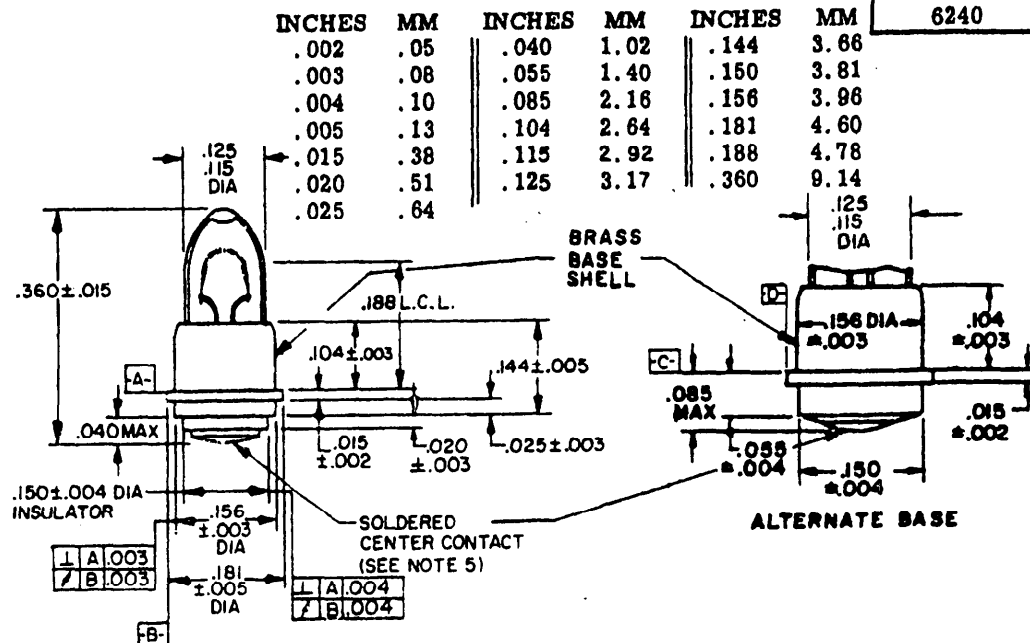


FED. SUP CLASS
6240

Dash number 1/	Trade number	Finish	Nominal rated voltage	Rated current ±10%	Mean spherical candlepower	Minimum life
			Volts	Ampere		Hours
-682 2/	682	Clear	5.0	0.060	0.03±25%	4000
-685	685	Clear	5.0	0.060	0.05±25%	4000
-714	714	Clear	5.0	0.075	0.09±25%	4000
-718	718	Clear	5.0	0.115	0.15±25%	4000
-682AS15	682AS-15	Clear	5.0	0.060	0.03±15%	4000
-685AS15	685AS-15	Clear	5.0	0.060	0.05±15%	4000
-714AS15	714AS-15	Clear	5.0	0.075	0.09±15%	4000
-718AS15	718AS-15	Clear	5.0	0.115	0.15±15%	4000

- 1/ The dash number added to the MS military-standard number constitutes the MS part number; for example, MS24515-682.
2/ MS24515-682 supersedes MS24515-1.

NOTES:

- Dimensions are in inches.
- Metric equivalents (to the nearest .01 mm) are given for general information only and are based upon 1 inch = 25.4 mm.
- Stamp or engrave trade number and manufacturer's trademark or abbreviation of manufacturer's name on lamp base.
- Mean spherical candlepower (MSCP) shall be obtainable within rated current range. Lamps shall be aged for 10 hours at or above rated voltage before measuring MSCP.
- Solder shall be in accordance with QQ-S-571.
- Referenced document shall be the issue in effect on date of invitation for bid.
- The bulb may not extend beyond the extended diameter of the base (.156 ± .003).

(F) ENTIRE STANDARD REVISED.

P.A. AF-11	International interest	TITLE	MILITARY STANDARD
Other Cust		LAMPS. INCANDESCENT, T-1, SUB-MIDGET FLANGED	MS 24515(USAF)
Procurement Specification		SUPERSEDES:	PAGE 1 OF 1

This standard has been approved by the Department of the AF and is mandatory for use by that activity. All other military activities are required to employ this standard where suitable.

DD FORM 672 (LIMITED COORDINATION)

6240-P300

APPROVED 14 FEB 58 REVISED (A) 19 DEC 60 (B) 16 JAN 61 (C) 9 AUG 66 (D) 19 MAY 72 (E) 30 AUG 72 (F) 24 MAY 79