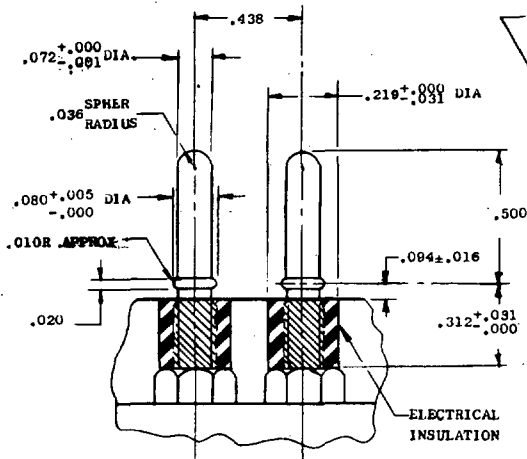
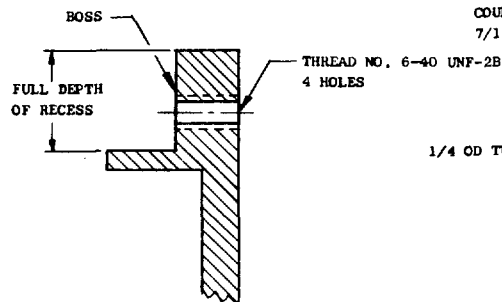
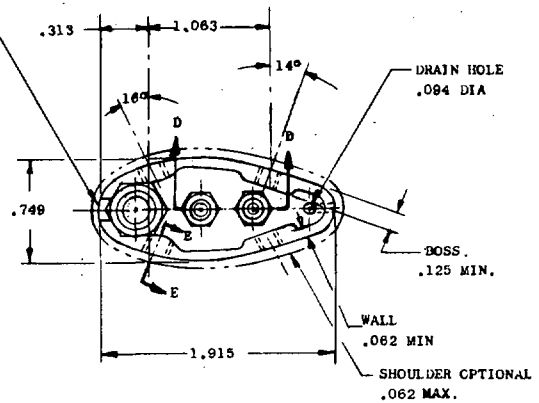
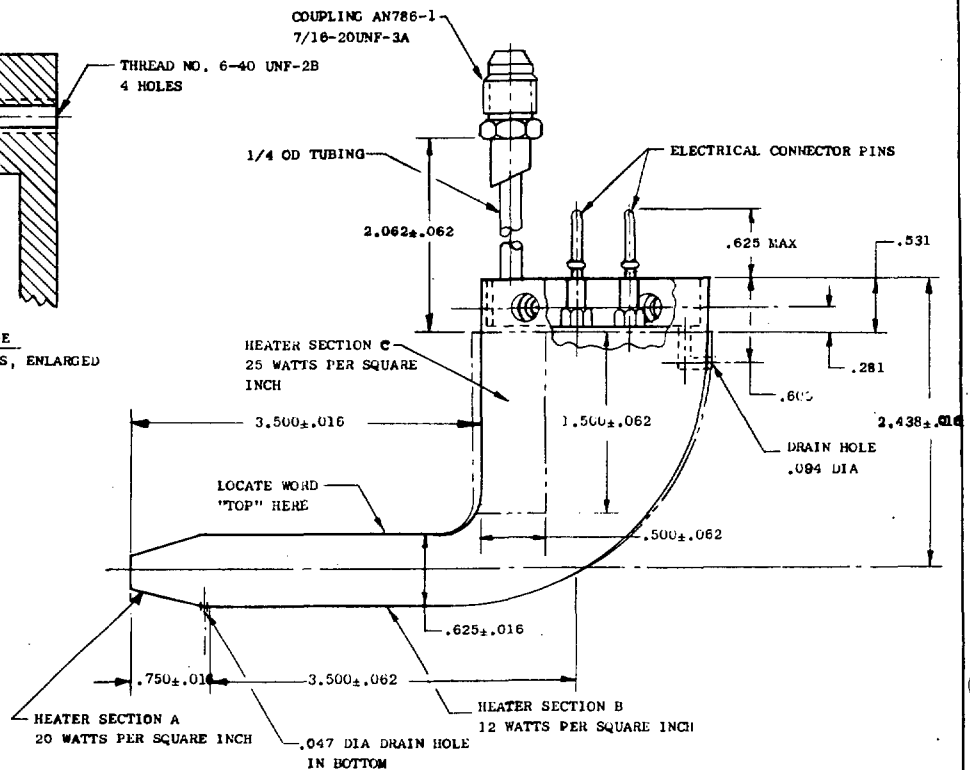
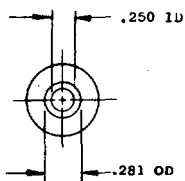


FED. SUP CLASS
6610SECTION D-D
ELECTRICAL CONNECTOR PINSSECTION E-E
MOUNTING HOLE BOSS, ENLARGED

DASH NO.	RATED VOLTAGE
MS24499-1	28 VOLT DC
MS24499-2	115 VOLT, 400 CYCLE, SINGLE PHASE AC

B REVISED & REDRAWN

NOTE:

1. DIMENSIONS IN INCHES. UNLESS OTHERWISE SPECIFIED, TOLERANCES: DECIMALS $\pm .003$, ANGLES $\pm 1^\circ$.
2. THIS STANDARD TAKES PRECEDENCE OVER DOCUMENTS REFERENCED HEREIN.
3. REFERENCE DOCUMENTS SHALL BE OF THE ISSUE IN EFFECT ON DATE OF INVITATIONS FOR BIDDING.

This standard has been approved by the Bureau of Naval Weapons, Department of the Navy, and is mandatory for use by that activity. All other military activities are required to employ this standard where suitable.

P.A. BUWEPs	TITLE	MILITARY STANDARD
Other Cust	TUBE, PITOT, ELECTRICALLY HEATED, "L" SHAPED	MS24499(Wep)
PROCUREMENT SPECIFICATION MIL-P-25945	SUPERSEDES:	SHEET 1 OF 1