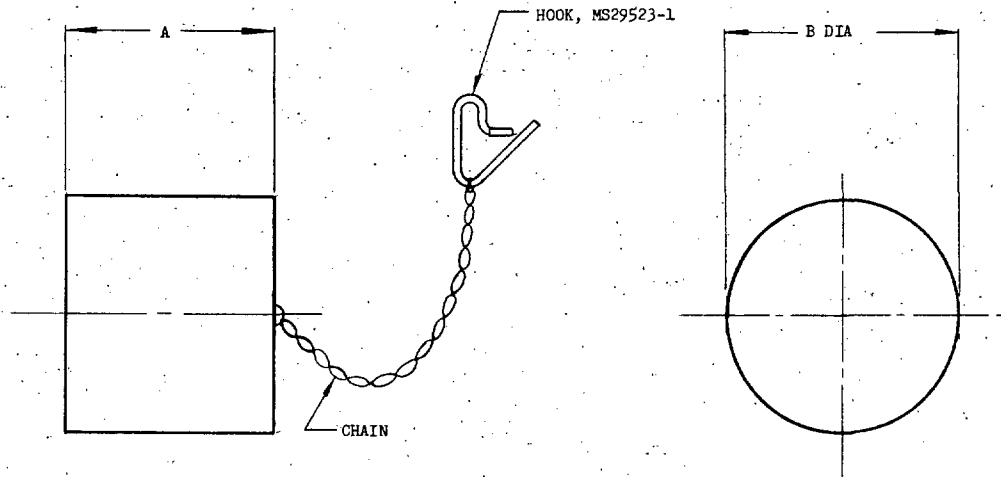


FED. SUP CLASS
1560

DASH NO.	A MAX	B MAX	MAX WEIGHT LB	FOR USE WITH ADAPTER
-1	1.75	2.00	.25	MS24476-1
-2	2.12	2.50	.35	MS24476-2

DIMENSIONS IN INCHES.

THIS OUTLINE REPRESENTS THE MAXIMUM ENVELOPE OF THE CAP UNLESS OTHERWISE SPECIFIED.

CHAIN SHALL BE OF SUFFICIENT STRENGTH AND LENGTH AS TO PREVENT ACCIDENTAL LOSS OF CAP AND TO PERMIT EASY INSTALLATION AND REMOVAL OF CAP.

ATTACHMENT POINT AND METHOD OF ATTACHING CHAIN TO CAP OPTIONAL WITH MANUFACTURER.

(B) STANDARD REDRAWN.

FOR DESIGN FEATURE PURPOSES, THIS STANDARD TAKES PRECEDENCE OVER PROCUREMENT DOCUMENTS REFERENCED HEREIN.
REFERENCED DOCUMENTS SHALL BE OF THE ISSUE IN EFFECT ON DATE OF INVITATIONS FOR BID.

P.A. USAP-- 11 Other Cust Navy - WP	TITLE CAP - LUBRICATION FITTING, PROTECTIVE, PRESSURE SERVICING ADAPTER	MILITARY STANDARD MS24480(ASG)
PROCUREMENT SPECIFICATION MIL-A-25676	SUPERSEDES:	SHEET 1 OF 1

Review and User activities:
USAP - 11
Navy - WP

This standard has been approved by the Bureau (Department of the Navy) and the Department of the USAF and is mandatory for use by that activity. All other military activities are required to employ this standard where suitable.

APPROVED 17 Jun 57 REVISED A 4 Jun 59 B 18 Dec 64