

INCH-POUND

MS24456E

21 December 2005

SUPERSEDING

MS24456D

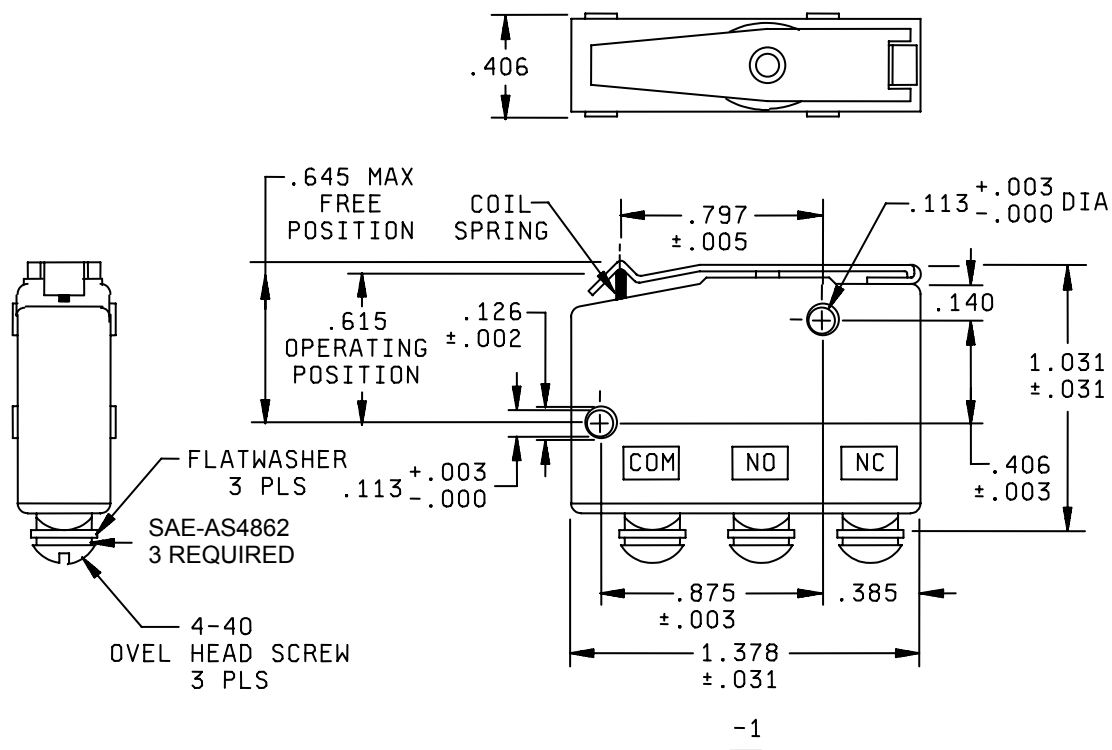
11 October 1968

## DETAIL SPECIFICATION SHEET

SWITCH, SENSITIVE, SEALED, SPDT, CLASS A5 OR B8

This specification is approved for use by all  
Departments and Agencies of the Department of Defense.

The complete requirements for acquiring the switch described herein shall consist of this specification and the latest issue of MIL-PRF-8805.

FIGURE 1. Dimensions and configuration.

MS24456E

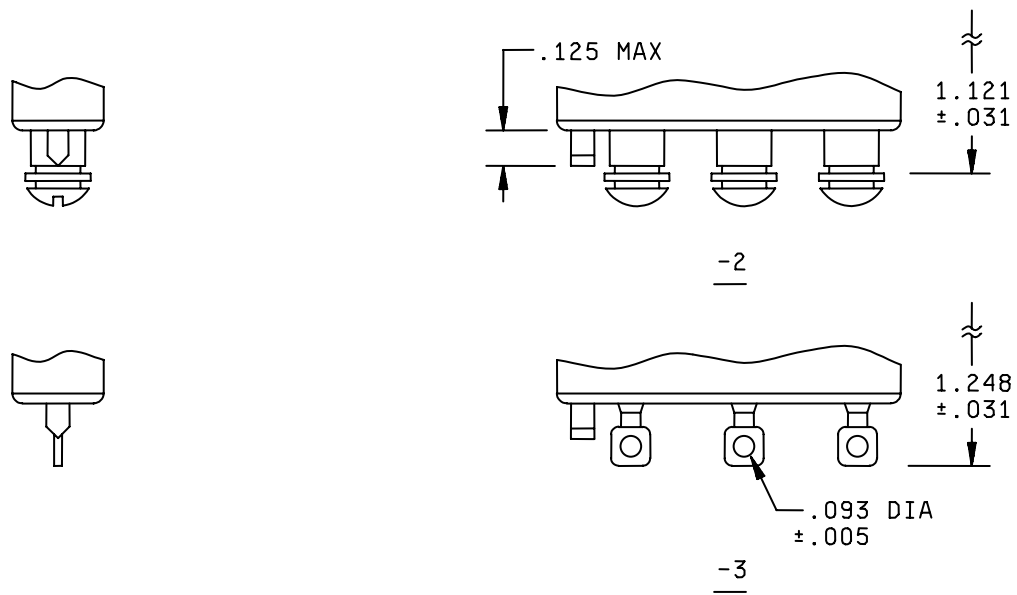


FIGURE 1. Dimensions and configuration - Continued.

MS24456E

TABLE I. Detail requirements.

Dash No.	Class	Current Capacity (Amperes)						Ambient Temp Range °C	Insulation (Sea Level Only) Volts RMS
		28 Volts DC			115 Volts 400 Cycles AC				
		Resistive	Inductive	Lamp	Resistive	Inductive	Lamp		
-1	A5	10	5	3	10	5	3	-55 to +71	1000
-2	B8							-70 to +120	1250
-3									

## Referenced Documents

MIL- PRF-8805

SAE-AS4862

Marginal notations are not used in this revision to identify changes with respect to the previous issue due to the extent of the changes.

## Custodians:

Army - MI

DLA - CC

## Preparing activity:

DLA - CC

(Project 5930-2006-007)

NOTE: The activities listed above were interested in this document as of the date of this document. Since organizations and responsibilities can change, you should verify the currency of the information above using the ASSIST Online database at <http://assist.daps.dla.mil/>.