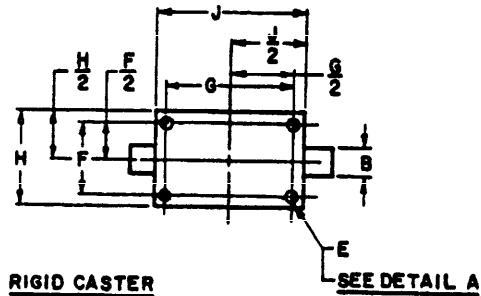
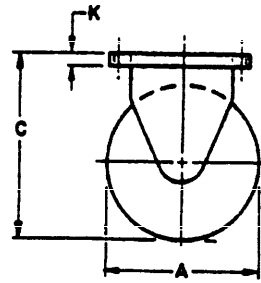
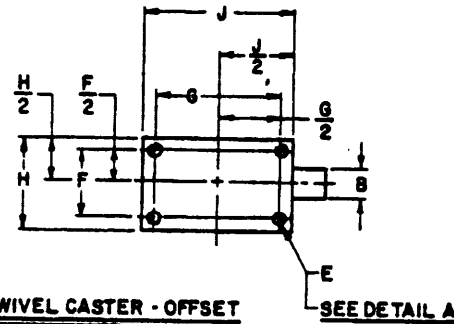
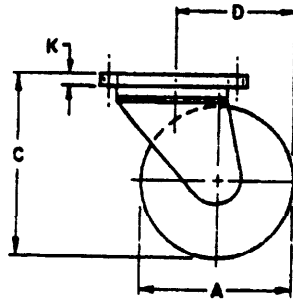
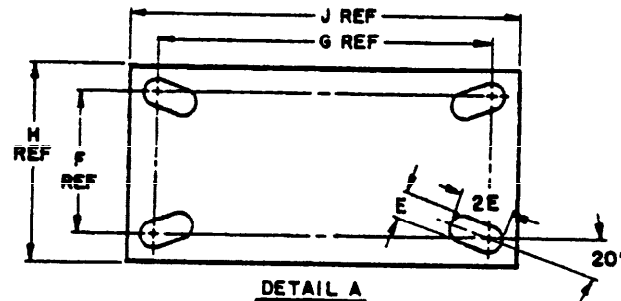


FED. SUP CLASS
5340USER ACTIVITIES: ARMY - J1
NAVY - MCREVIEWER ACTIVITIES: NAVY - SA
DLA - 18This military standard is approved for use by all Departments and Agencies of the Department of Defense
Selection for all new engineering and design applications and for repetitive use shall be made from this
documentRIGID CASTERSWIVEL CASTER - OFFSETDETAIL AALTERNATE TOP PLATE FOR RIGID AND SWIVEL CASTER

DIMENSIONS IN INCHES.

FOLLOWING NOTES APPLY TO MS PART NO. TABLE (SEE SHEET 2):

(a) DASH NUMBERS -4, -6, -8, -10 & -12 DESIGNATE THE WHEEL SIZE AS DESIGNATED BY COLUMN "A Wheel Dia"

THE FIRST LETTERS DESIGNATE THE STYLE OF CASTER AS FOLLOWS:

R - RIGID CASTER
S - SWIVEL CASTER

THE SECOND DASH LETTERS DESIGNATE THE WHEEL MATERIAL AS FOLLOWS:

T - RUBBER TREAD
C - COMPOSITION WHEEL FOR 4 & 6 INCH SIZES
M - METAL WHEELS

ADDITIONAL DASH LETTERS SHALL BE ADDED, WHEN REQUIRED, TO DESIGNATE THE FOLLOWING:

L - SWIVEL LOCK FOR 4, 4.5, 6 INCH SIZES
E - ELECTROSTATICALLY CONDUCTIVE FOR "M" WHEELS IN 4 & 6 INCH SIZES & FOR "M" WHEELS IN THE 4, 4.5, 10, & 12 INCH SIZES.
H - SHOCK-MOUNTING FOR 4, 10, & 12 INCH SIZES
B - BRAKES INSTALLED

(5) APPLIES ONLY TO SWIVEL CASTERS

(c) OVERALL HEIGHT FOR SHOCK MOUNTED CASTERS SHALL BE MEASURED UNDER RATED LOAD CONDITIONS

EXAMPLE OF PART NO. MS24380-8SLEH: SIZE 8 WHEEL, SWIVEL STYLE, SWIVEL LOCK, ELECTROSTATICALLY CONDUCTIVE, SHOCK-MOUNTED

FOR DESIGN FEATURE PURPOSES, THIS STANDARD TAKES PRECEDENCE OVER PROCUREMENT DOCUMENTS REFERENCED HEREIN.

REFERENCED DOCUMENTS SHALL BE OF THE ISSUE IN EFFECT ON DATE OF INVITATIONS FOR BID.

(D) ENTIRE STANDARD REVISED

P.A. AIR FORCE - 82

Other Cast

NAVY - AS

AIR FORCE - 89

PROCUREMENT SPECIFICATION
MIL-C-7474

TITLE

CASTERS, INDUSTRIAL

SUPERSEDES:

MILITARY STANDARD

MS24380

SHEET 1 OF 2

DD FORM 672-1 (Coordinated)

PREVIOUS EDITIONS OF THIS FORM ARE OBSOLETE.

PROJECT 5340-1498

APPROVED 29 OCT 87 REVISED (A) 16 MAR 88 (B) 21 MAR 89 (C) 6 OCT 76 (D) 31 MARCH 1983

This military standard is approved for use by all Departments and Agencies of the Department of Defense
Selection for all new engineering and design applications and for repetitive use shall be made from this document

REVISIONS

NAVY-SA
DLA-15

USER ACTIVITIES

ARMY-AT
NAVY-MC

FED. SUP CLASS
5340

© Entire Standard Revised

P.A. Air Force - 82 Other Cust	TITLE CASTERS, INDUSTRIAL	MILITARY STANDARD MS24380
Navy - AS AIR FORCE - 99	SUPERSEDES:	SHEET
PROCUREMENT SPECIFICATION MIL-C-7474		

DD FORM 672-1 (Continued)

EDITION OF 1 SEP 67 MAY BE USED.

APPROVED 29 JUL 57 REVISED SEE SHEET 1 FOR REVISIONS

(a)	A	WHEEL DIA. (INCH.)	STYLE OF CASTER	WHEEL TREAD MATERIAL	RATED LOAD LBS (MIN)	CASTER WEIGHT LBS (MAX)	B	C	D	E	F	G	H	J	K
MS PART NO.							MIN TREAD WIDTH BASE OF TIRE	OVERALL HEIGHT	SWIVEL RADIUS	DIA OF BOLT HOLES	BOLT HOLE SPACING	BOLT HOLE SPACING	MAX TOP PLATE WIDTH	MAX TOP PLATE LENGTH	MAX TOP PLATE THICKNESS AT BOLT HOLES
MS24380-400	4		RIGID	RUBBER	170	2.8	1.500	±.06	3.875	±.015	±.020	±.020	4.125	4.625	.250
MS24380-420			SWIVEL	COMPO	400	3.6		5.250	3.375	-.005	2.625	3.625			
MS24380-450			SWIVEL	SITON	400	3.9		7.375	4.750	±.015	±.020	5.250	5.125	7.125	.312
MS24380-450M			SWIVEL	METAL	400	4.7				-.005	3.375	5.250			
MS24380-600	6		RIGID	RUBBER	340	7.2	2.000	±.06		±.015	±.020	±.020			
MS24380-650			SWIVEL	COMPO	600	8.8		7.375		±.015	±.020	5.250	5.125	7.125	.312
MS24380-650C			SWIVEL	SITON	600	8.8		10.250	6.875	±.015	±.020	5.250	5.375	7.25	.500
MS24380-650M			SWIVEL	METAL	600	9.4				±.015	±.020	5.250			
MS24380-800	8		RIGID	RUBBER	560	26.0	2.500	±.09		±.015	±.020	±.020			
MS24380-850			SWIVEL	COMPO	1200	30.0		10.250	6.875	±.015	±.020	5.250	5.375	7.25	.500
MS24380-850C			SWIVEL	SITON	1200	30.0		12.875	8.750	±.015	±.020	5.250	5.375	7.25	.500
MS24380-850M			SWIVEL	METAL	1200	32.0				±.015	±.020	5.250			
MS24380-1000	10		RIGID	RUBBER	830	53.0	3.000	±.09		±.030	±.020	±.020			
MS24380-1050			SWIVEL	COMPO	2000	63.0		12.875	8.750	±.030	±.020	5.250	9.125	11.125	.625
MS24380-1050C			SWIVEL	SITON	2000	63.0				±.030	±.020	5.250			
MS24380-1050M			SWIVEL	METAL	2000	68.0				±.030	±.020	5.250			
MS24380-1200	12		RIGID	RUBBER	950	65.0	3.000	±.09		±.030	±.020	±.020			
MS24380-1250			SWIVEL	COMPO	2500	72.0		14.875	10.00	±.030	±.020	5.250	9.125	11.125	.625
MS24380-1250C			SWIVEL	SITON	2500	72.0				±.030	±.020	5.250			
MS24380-1250M			SWIVEL	METAL	2500	72.0				±.030	±.020	5.250			