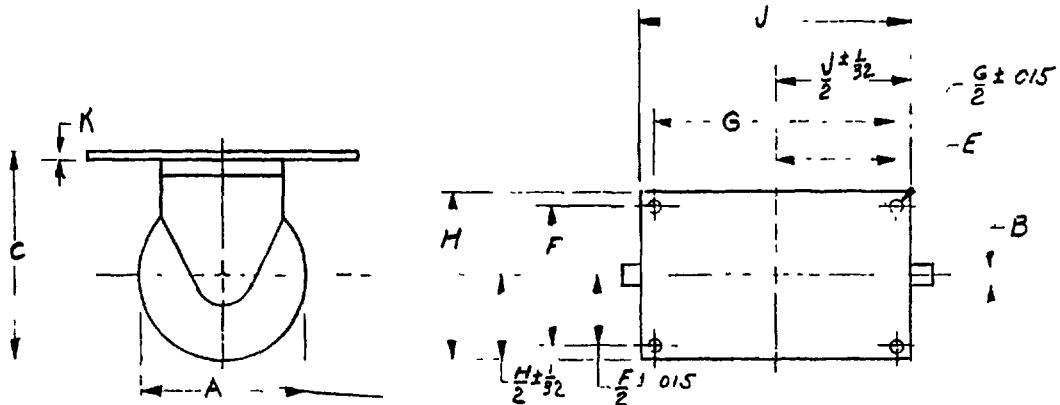
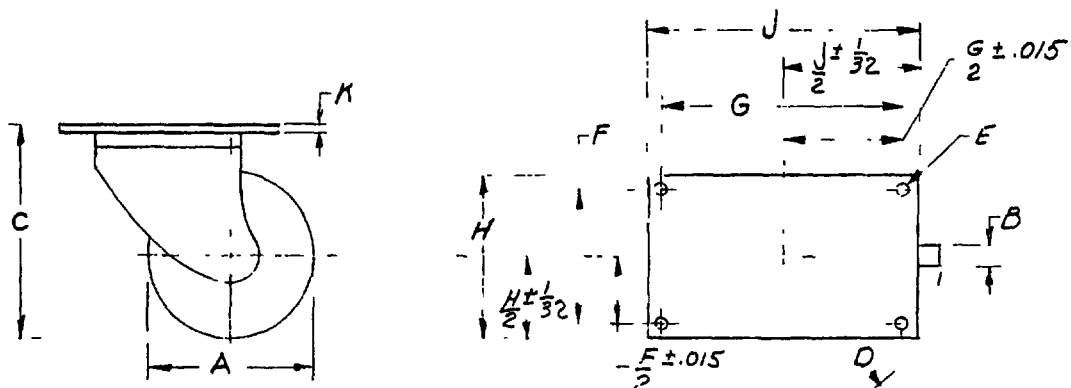


FED. SUP CLASS
5360RIGID CASTER NONSWIVELSWIVEL CASTER OFFSET

DIMENSIONS IN INCHES

FOLLOWING NOTES APPLY TO MS PART NO. TABLE (SEE SHEET 2)

- (a) DASH NUMBERS -8, -10, -12, & -16 DESIGNATE THE WHEEL SIZE AS DESIGNATED BY COLUMN "A".
THE FIRST DASH LETTERS DESIGNATE THE TYPE OF WHEEL AS FOLLOWS:

S - SINGLE
D - DUAL

THE SECOND DASH LETTERS DESIGNATE THE STYLE OF CASTER AS FOLLOWS:

R - RIGID
W - SWIVEL

THE THIRD DASH LETTERS DESIGNATE THE TYPE TIRE AS FOLLOWS:

C - CURED OR VULCANIZED ON TIRE
V - VULCANIZED DEMOUNTABLE TIRE

THE FOURTH DASH LETTERS DESIGNATE THE DEFLECTION AS FOLLOWS:

L - LOW TOTAL DEFLECTION (1/2 TO 1 INCH MAX.)
H - HIGH TOTAL DEFLECTION (1 TO 2 INCHES MAX.)

ADDITIONAL DASH LETTERS SHALL BE ADDED TO CASTERS, WHEN REQUIRED, TO DESIGNATE THE FOLLOWING:

P - STEERING PROVISIONS
B - BRAKES INSTALLED

(b)

- (b) THE "B" TREAD WIDTH IS THE WIDTH OF EACH WHEEL ON THE CASTER, WHETHER THE CASTER IS OF SINGLE OR DUAL WHEEL CONSTRUCTION

- (c) APPLIES TO SWIVEL CASTER ONLY

EXAMPLE OF PART NO: MS24374-8SRVL: SIZE 8, SINGLE WHEEL, DEMOUNTABLE TIRE, LOW TOTAL DEFLECTION.

FOR DESIGN FEATURE PURPOSES, THIS STANDARD TAKES PRECEDENCE OVER PROCUREMENT DOCUMENTS REFERENCED HEREIN.

REFERENCED DOCUMENTS SHALL BE OF THE ISSUE IN EFFECT ON DATE OF INVITATION FOR BID.

(b) FOR CHANGES SEE SHEETS 1, 2, AND 3 SHEET 4 DELETED.

APPROVED 30 JUN 56 REVISED 1 MAY 1963 3 SEP 65

P A Air Force - 11 Other Cust Air Force - 11 Army - GL Navy - YD	TITLE CASTERS, RIGID AND SWIVEL - PRECISION SPRING MOUNTED	MILITARY STANDARD MS 24374 SHEET 1 OF 3
PROCUREMENT SPECIFICATION MIL-C-4751	SUPERSEDES	

Users
WC MO, CE
Reviewers:
Army - GL
Navy - YD
Air Force - 11, 69
ISA-15

This military standard has been approved by the Department of Defense and is mandatory for use by all Departments and Agencies of the Department of Defense. Selection for all new engineering design applications and for repetitive use shall be made from this document.

This military standard has been approved by the Department of Defense and is mandatory for use by all Departments and Agencies of the Department of Defense. Selection for all new engineering design applications and for repetitive use shall be made from this document.

Reviewers:
Army - GL
Navy - YD
Air Force - 11, 69
DS-15

Users:
WC, MO, CE

MS PART NO.		A	(3)	(5)	TYPE	TIRE	TOTL DEFLECTION	RATED LOAD LB (MIN)	CASTER WEIGHT MAX. LB.	B (b)	C	D (c)	E	F	G	H	J	K
WHEEL DIA. NOM		STYLE	WHEEL							THREAD WIDTH AT BASE OF TIRE 2 1/16	OVERALL HEIGHT AT RATED LOAD 2 1/4	SWIVEL CLEARANCE MAX. MIN.	DIA. OF BOLT HOLES 1.004	BOLT HOLES SPACING 1.010	BOLT HOLES SPACING 1.010	MAX. TOP PLATE WIDTH	MAX. TOP PLATE LENGTH	MAX. PLATE THICKNESS AT BOLT HOLES
MS24374-SSRCL	8	RIGID	SINGLE	CURVED ON	LOW	HIGH	560	35	2-1/2	11-1/4	9-3/2 6-1/2	.656	6.750	4.875	7	8-1/2	3/4	
MS24374-SSRCH																		
MS24374-SSRVL		SWIVEL	CURVED ON	LOW	HIGH	755	90	2-1/2	11-1/4	9-3/2 6-1/2	.656	6.750	4.875	7	8-1/2	3/4		
MS24374-SSRVL																		
MS24374-SSRCH		RIGID	DUAL	CURVED ON	LOW	HIGH	850	40	2-1/2	11-1/4	9-3/2 6-1/2	.656	6.750	7	8-1/2	3/4		
MS24374-SSRVL																		
MS24374-SSRCH		SWIVEL	CURVED ON	LOW	HIGH	1120	60	2-1/2	11-1/4	9-3/2 6-1/2	.656	6.750	4.875	7	8-1/2	3/4		
MS24374-SSRVL																		
MS24374-SSRCH	RIGID	SINGLE	CURVED ON	LOW	HIGH	850	40	2-1/2	11-1/4	9-3/2 6-1/2	.656	6.750	4.875	7	8-1/2	3/4		
MS24374-SSRVL																		
MS24374-SSRCH	SWIVEL	CURVED ON	LOW	HIGH	1120	60	2-1/2	11-1/4	9-3/2 6-1/2	.656	6.750	4.875	7	8-1/2	3/4			
MS24374-SSRVL																		
MS24374-SSRCH	RIGID	DUAL	CURVED ON	LOW	HIGH	850	40	2-1/2	11-1/4	9-3/2 6-1/2	.656	6.750	4.875	7	8-1/2	3/4		
MS24374-SSRVL																		
MS24374-SSRCH	SWIVEL	CURVED ON	LOW	HIGH	1120	60	2-1/2	11-1/4	9-3/2 6-1/2	.656	6.750	4.875	7	8-1/2	3/4			
MS24374-SSRVL																		
MS24374-SSRCH	RIGID	SINGLE	CURVED ON	LOW	HIGH	850	40	2-1/2	11-1/4	9-3/2 6-1/2	.656	6.750	4.875	7	8-1/2	3/4		
MS24374-SSRVL																		
MS24374-SSRCH	SWIVEL	CURVED ON	LOW	HIGH	1120	60	2-1/2	11-1/4	9-3/2 6-1/2	.656	6.750	4.875	7	8-1/2	3/4			
MS24374-SSRVL																		
MS24374-SSRCH	RIGID	DUAL	CURVED ON	LOW	HIGH	850	40	2-1/2	11-1/4	9-3/2 6-1/2	.656	6.750	4.875	7	8-1/2	3/4		
MS24374-SSRVL																		
MS24374-SSRCH	SWIVEL	CURVED ON	LOW	HIGH	1120	60	2-1/2	11-1/4	9-3/2 6-1/2	.656	6.750	4.875	7	8-1/2	3/4			
MS24374-SSRVL																		

FED SUP CLASS
5340

P A Air Force - 11

Other Cust

Air Force - 11

Army - GL

Navy - YD

PROCUREMENT SPECIFICATION
MIL-C-4751

TITLE

CASTERS, RIGID AND SWIVEL - PRECISION,
SPRING MOUNTED

SUPERSEDES

MILITARY STANDARD

MS 24374

SHEET 2

APPROVED 30 JAN 58 REVISED (B) For changes see sheets 1, 2, AND 3

This military standard has been approved by the Department of Defense and is mandatory for use by all Departments and Agencies of the Department of Defense. Selection for all new engineering design applications and for repetitive use shall be made from this document.

Users
Army - GL
Navy - YD
Air Force - 11, 69
DA-15

Reviewers
Army - GL
Navy - YD
Air Force - 11, 69
DA-15

FED SUP CLASS
5340

A		B		C		D		E		F		G		H		I		J		K	
MS PART NO.	WHEEL DIA. NOM	STYLE	TYPE WHEEL	TIRE	TOTAL DEFLECTION	RATED LOAD LB (MIN)	CASTER WEIGHT LB MAX	TRAIL (b) WIDTH AT BASE OF TIRE ±1/16	OVERALL HEIGHT AT RATED LOAD ±1/16	SWIVEL CLEARANCE MIN.	DIA. OF BOLT HOLES ±.004	BOLT HOLES SPACING ±.010	BOLT HOLES SPACING ±.010	MAX. PLATE TOP PLATE WIDTH	MAX. PLATE TOP PLATE LENGTH	MAX. PLATE THICKNESS AT BOLT HOLES					
MS24374-12SRCH	12	RIGID	SINGLE	CURED ON	LOW	950	50	3	15-1/2	11-1/2 9-3/4	656	6.750	4.875	7	8-1/2	3/4					
MS24374-12SRCH				HIGH																	
MS24374-12SRVL				LOW																	
MS24374-12SRVL				HIGH																	
MS24374-12SWCH		SWIVEL	CURED ON	LOW																	
MS24374-12SWCH			HIGH																		
MS24374-12SWVL			LOW																		
MS24374-12SWVL			HIGH																		
MS24374-12SRCH		RIGID	DUAL	CURED ON	LOW	1280	70	4	19-1/2	15	.696	9.750	7.000	9	11	3/4					
MS24374-12SRCH				HIGH																	
MS24374-12SRVL				LOW																	
MS24374-12SRVL				HIGH																	
MS24374-12SWCH	SWIVEL	CURED ON	LOW																		
MS24374-12SWCH		HIGH																			
MS24374-12SWVL		LOW																			
MS24374-12SWVL		HIGH																			
MS24374-16SRCH	16	RIGID	SINGLE	CURED ON	LOW	1660	70	4	19-1/2	15	.696	9.750	7.000	9	11	3/4					
MS24374-16SRCH				HIGH																	
MS24374-16SRVL				LOW																	
MS24374-16SRVL				HIGH																	
MS24374-16SWCH		SWIVEL	CURED ON	LOW																	
MS24374-16SWCH			HIGH																		
MS24374-16SWVL			LOW																		
MS24374-16SWVL			HIGH																		
MS24374-16SRCH		RIGID	DUAL	CURED ON	LOW	2440	120	4	19-1/2	15	.696	9.750	7.000	9	11	3/4					
MS24374-16SRCH				HIGH																	
MS24374-16SRVL				LOW																	
MS24374-16SRVL				HIGH																	
MS24374-16SWCH	SWIVEL	CURED ON	LOW																		
MS24374-16SWCH		HIGH																			
MS24374-16SWVL		LOW																			
MS24374-16SWVL		HIGH																			

(B) NOTE DELETED

P A Air Force - 11		TITLE		MILITARY STANDARD	
Other Cust Air Force - 11 Army - GL Navy - YD		CASTERS RIGID AND SWIVEL - PRECISION, SPRING MOUNTED		MS24374	
PROCUREMENT SPECIFICATION MIL-C-4751		SUPERSEDES		SHEET 3	