

This military standard has been approved by the Department of Defense and is mandatory for use by all Departments and Agencies of the Department of Defense. Selection for all new engineering design applications and for repetitive use shall be made from this document.

Users:  
Rev. Army - GL  
MC, MO, CE  
Navy - YD  
Air Force - 11, 69  
ISA-15

P. A. Air Force - 11  
Other Custodians  
Army - WC  
Navy - YD

PROCUREMENT SPECIFICATION  
MIL-C-4751

DO FORM 672-1  
1 OCT 52

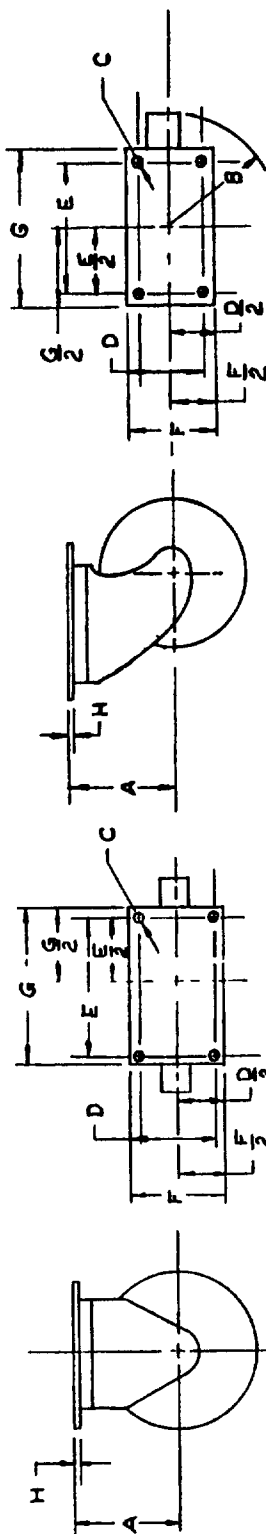
SUPERSEDES:

# MILITARY STANDARD

CASTERS, RIGID AND SWIVEL, PRECISION  
PNEUMATIC TIRIED

# MS24373

SHEET 1 OF 2



## RIGID & SWIVEL CASTER NON-OFFSET

## SWIVEL CASTER OFFSET

DIMENSIONS IN INCHES.

FOLLOWING NOTES APPLY TO MS PART NO. TABLE (SEE SHEET 2).

(A) DASH NUMBERS -8, -9, & -10 DESIGNATE THE WHEEL SIZE AS DESIGNATED BY THE "TIRE SIZE" COLUMN.

THE FIRST DASH LETTERS DESIGNATE THE STYLE OF CASTER AS FOLLOWS:

R - RIGID  
H - NON-OFFSET SWIVEL  
W - OFFSET SWIVEL

THE SECOND DASH LETTERS DESIGNATE THE TYPE OF WHEEL AS FOLLOWS:

S - SINGLE  
D - DUAL

THE THIRD DASH LETTERS DESIGNATE THE MOUNTING AS FOLLOWS:

C - CANTILEVER MOUNTED (SINGLE & DUAL WHEELS)  
P - FORK MOUNTED (SINGLE WHEELS ONLY)

ADDITIONAL DASH LETTERS SHALL BE ADDED TO CASTERS, WHEN REQUIRED, TO DESIGNATE THE FOLLOWING:

P - STEERING PROVISIONS  
B - BRAKES INSTALLED

(B) APPLIES ONLY TO OFFSET SWIVEL CASTERS

EXAMPLE OF PART NO. MS 24373-6WFFP: SIZE 3.50 X 6, OFFSET SWIVEL, SINGLE WHEEL, FORK MOUNTED, STEERING PROVISIONS

FOR DESIGN FEATURE PURPOSES, THIS STANDARD TAKES PRECEDENCE OVER PROCUREMENT DOCUMENTS REFERENCED HEREIN.

REFERENCED DOCUMENTS SHALL BE OF THE ISSUE IN EFFECT ON DATE OF INVITATION FOR BID.

FED 811P CLASS  
5340

For changes see sheets 1 & 2. Sheet 3 deleted.

APPROVED 30 JAN 58 REVISED 3 SEP 65

