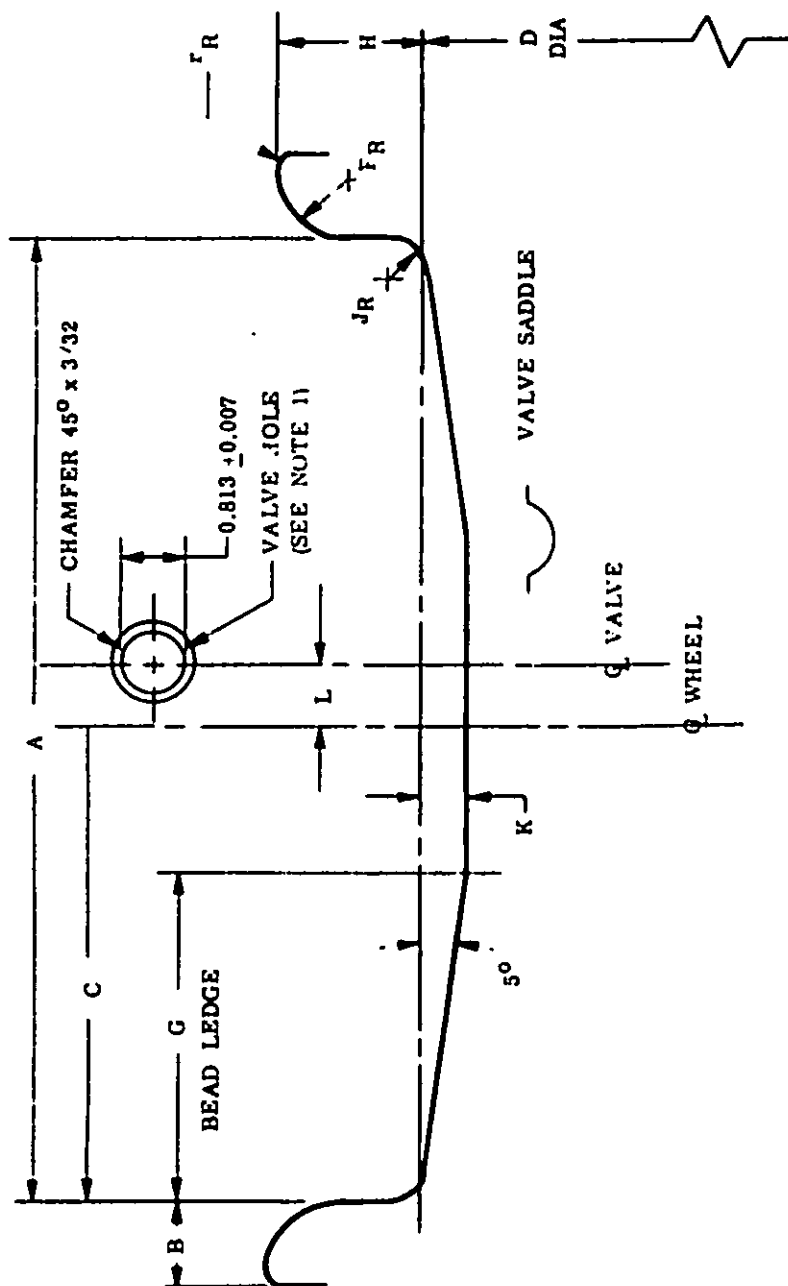


FED. SUP CLASS
1630

Reviewers/User Activities: Air Force; OOA. Reviewer/User information is current as of the date of this document. For future coordination of changes to this document draft circulation should be based on the information in current DOWNS.



SIZE	A	B	C	D	DIAMETER	FR	G	H	K		JR	L	FR
									MAX	MIN			
56 x 16	+0.062 12.750	MIN 1.250	+0.031 6.375	28.000	+0.023 -0.000	+0.016 1.062	MIN 4.375	+0.010 2.250	0.688	0.375	+0.010 0.500	-0.125 0.640	MIN 0.125
49 x 17	13.250	1.188	6.625	20.000	+0.018 -0.000	0.938	3.250	1.750	0.875	0.312	0.394	0.375	0.156

NOTE 1: VALVE HOLE, "L" DIMENSION AND VALVE

SADDLE REQUIRED ON TUBE TYPE AND CONVERTIBLE WHEELS ONLY. TUBELESS WHEELS REQUIRE A MACHINED BOSS, PER AND10050.

THIS IS A DESIGN STANDARD AND SHALL NOT BE USED AS A PART NUMBER

P.A. OOA	TITLE	MILITARY STANDARD
Other Cust	RIM CONTOURS, 56 X 1 AND 49 X 17, TYPE VII, EXTRA HIGH PRESSURE, MLG WHEEL	MS 24368 (USAF)
Procurement Specification NONE	SUPERSEDES:	SHEET OF

DD FORM 672 (Coordinated) PREVIOUS EDITIONS OF THIS FORM ARE OBSOLETE.

GPO 603-075

APPROVED 25 APR 56 REVISED (A) 5 MAR 64