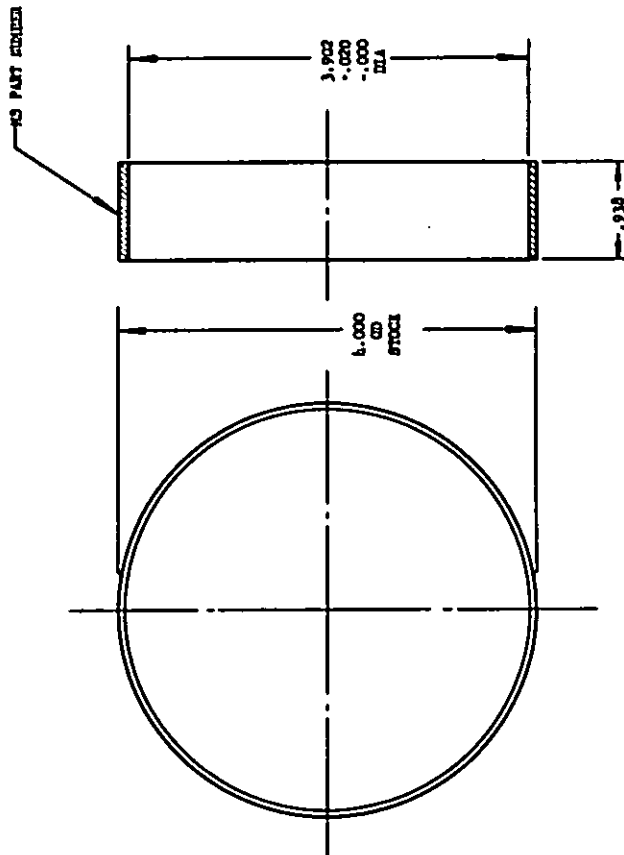


FED. SUP CLASS.
1680

This standard has been approved by the Duples (Department of the Army) and the Department of the Navy, and is mandatory for use by all military activities. All other military activities are required to comply with this standard where applicable.

NOTICE: When Government drawings, specifications, or other data are used for any purpose other than in connection with a definitely related Government procurement operation, the United States Government hereby assumes no responsibility, nor any obligation whatsoever, and the fact that the Government may have furnished, furnished, or in any way supplied the said drawings, specifications, or other data is not to be regarded by implication or otherwise as in any manner licensing the holder or any other person or corporation, or accepting any rights or permission to manufacture, use, or sell any patented invention that may in any way be related thereto.



DATE	NO.	REV.	BY	LD
-1				.162

MATERIAL: 305 CORROSION-RESISTANT STEEL TUBING, TYPE I OR II, CONDITION-ANNEALED, SPECIFICATION MIL-T-8506.

REMOVE ALL BURS AND BRILL GRASP EDGES .010 TO .020.

DIMENSIONS IN INCHES. DECIMALS SPECIFIED, TOLERANCES: DECIMALS ±.010.

FOR DESIGN PLATINUM PURPOSES, THIS STANDARD TAKES PRECEDENCE OVER PRECEDENT DOCUMENTS REFERENCED HEREIN. REFERENCED DOCUMENTS SHALL BE OF THE ISSUE IN EFFECT ON DATE OF INITIATIONS FOR RLD.

APPROVED 18 MAY 56 REVISED 15 MAY 61

P.A. CLAP - AFSC

Other Cast
Navy - Wcp

PROCUREMENT SPECIFICATION
MIL-C-25162

TITLE

SLEEVE - TYPE NA-2, FLIGHT PRESSURE REFUELING, RECEPTION COUPLING

SUPERSEDES: CLAP 550059

MILITARY STANDARD

MS24362(ASG)

SHEET 1 OF 1