

INCH-POUND

MS24358B  
18 April 2016  
SUPERSEDING  
MS24358A  
15 May 1961

## DETAIL SPECIFICATION SHEET

### FITTING, HOSE END – TYPE MA-2, FLIGHT PRESSURE REFUELING, RECEPTION COUPLING, OUTLINE DIMENSIONS FOR

Reactivated after 18 April 2016, and may be used for new and existing designs and acquisitions.

This specification sheet is approved for use by all Departments and Agencies of the Department of Defense.

The requirements for acquiring the product described herein shall consist of this specification sheet and the procurement specification MIL-PRF-81975, Couplings, Regulated, Aerial Pressure Refueling Type MA-2, Type MA-3 and Type MA-4.

For design feature purposes, this specification sheet takes precedence over procurement documents referenced herein. Referenced documents shall be of the issue in effect on date of invitation for bid. In the event of a conflict between the text of this specification sheet and the references cited herein, the text of this specification shall take precedence.

Comments, suggestions, or questions on this document should be addressed to Air Force Sustainment Center - Oklahoma City/AFLCME/LZPES, 3001 Staff Drive, Suite 1AB81A, Tinker AFB, OK 73145 or emailed to [ocalc.dsp@us.af.mil](mailto:ocalc.dsp@us.af.mil). Since contact information can change, you may want to verify the currency of this address information using the ASSIST Online database at <https://assist.dla.mil>.

## MS24358B

### REQUIREMENTS:

1. Where shown surface roughness 63/, other surfaces 125/ optional, ASME-B46.1.
2. Remove all burrs and round sharp edges .010 to .020 max.
3. Dimensions in inches. Unless otherwise specified, tolerances: decimals  $\pm .015$ , angles  $\pm 2^\circ$ .
4. For use with coupling, MS24355-1.

### NOTES:

This document references the following:

MIL-H-4495, Hose Assembly, Rubber, Aerial Refueling  
MS24355, Coupling Reception – Type MA-2, Flight Pressure Refueling, Assembly of

(Copies of these documents are available from <https://assist.dla.mil/>.)

ASME-B46.1, Surface Texture, (Surface Roughness, Waviness and Lay)

(Copies of this document are available from <http://www.asme.org/>.)

SAE-AS29513, Packing, Preformed, Hydrocarbon Fuel-Resistant, “O” Ring

(Copies of this document are available from <http://www.sae.org/>.)

Changes from previous issue: Marginal notations are not used in this revision to identify changes with respect to the previous issue due to the extent of the changes.

MS24358B

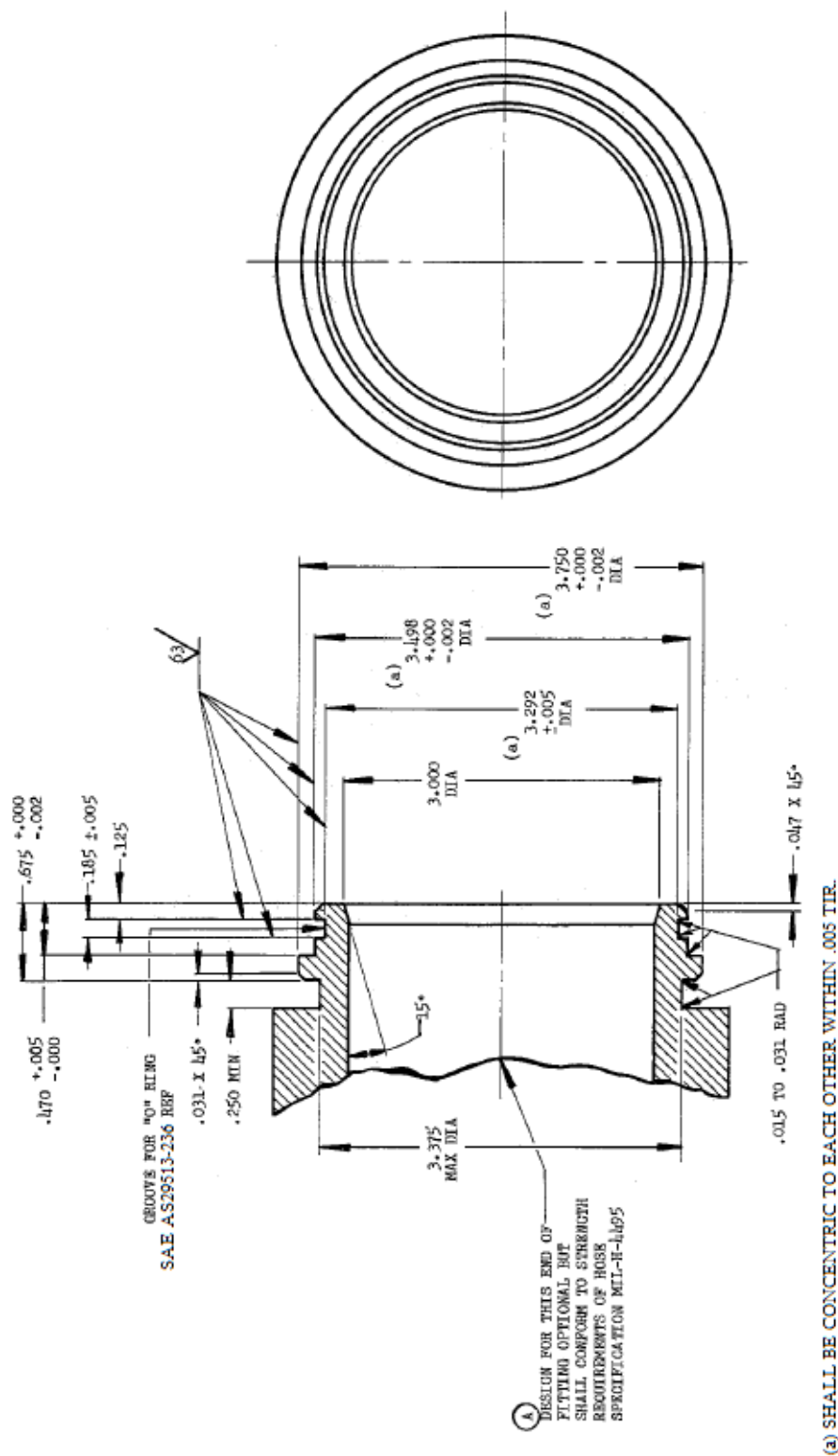


FIGURE 1. Fitting, hose end – type ma-2, flight pressure refueling, reception coupling,  
outline dimensions for.

MS24358B

Custodians:

Air Force - 71

Navy - AS

Preparing activity:

Air Force - 71

(Project 1680-2016-004)

Reviewer activities:

Air Force – 99

DLA - GS

NOTE: The activities listed above were interested in this document as of the date of this document. Since organizations and responsibilities can change, you should verify the currency of the information above using the ASSIST database at <https://assist.dla.mil/>.