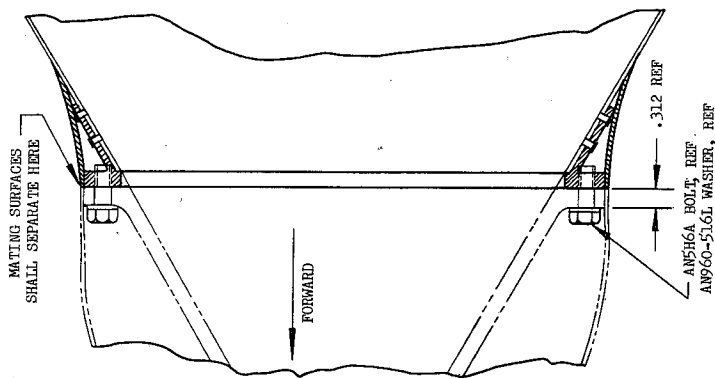


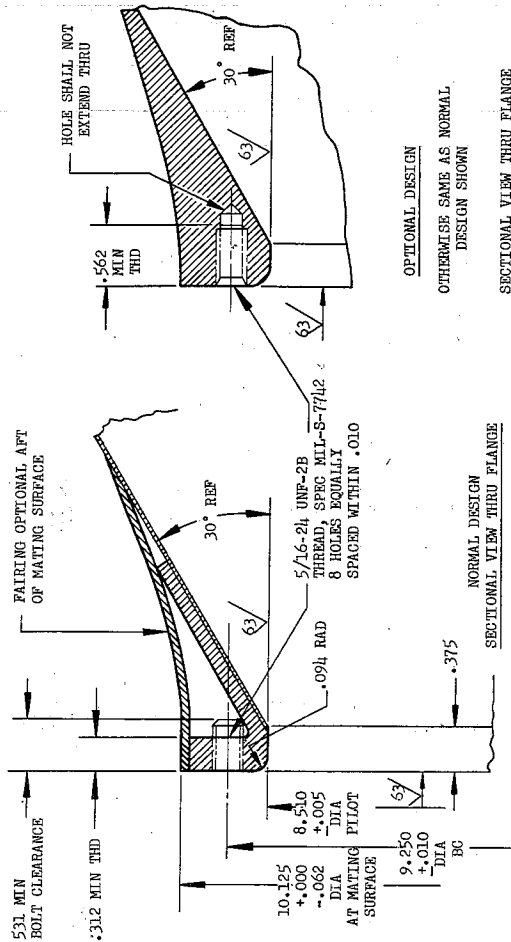
This standard has been approved by the Bureau (Department of the Navy) and the Department of the Navy, and is mandatory for use by the Navy. All other military activities are required to employ this standard where suitable.

NOTICE.—When Government drawings, specifications, or other data are used for any purpose other than in connection with a definitely related Government procurement operation, the United States Government thereby incurs no responsibility, nor any obligation whatsoever; and the fact that the Government may have furnished, furnished, or in any way supplied the said drawings, specifications, or other data is not to be regarded by implication or otherwise as in any manner licensing the holder or any other person or corporation, or conveying any rights or permission to manufacture, use, or sell any patented invention that may in any way be related thereto.



NORMAL DESIGN
SECTIONAL VIEW OF ASSEMBLY AT MATING SURFACES

WHERE SPECIFIED SURFACE ROUGHNESS $\sqrt{63}$ MIL-STD-10.-
DIMENSIONS IN INCHES. UNLESS OTHERWISE SPECIFIED, TOLERANCES: DECIMALS $\pm .010$, ANGLES $\pm 2^\circ$.
THIS FLANGE FOR USE WITH COUPLING, MS24355-1.



OPTIONAL DESIGN
OTHERWISE SAME AS NORMAL
DESIGN SHOWN
SECTIONAL VIEW THRU FLANGE

NORMAL DESIGN
SECTIONAL VIEW THRU FLANGE

THIS IS A DESIGN STANDARD. NOT TO BE USED AS A PART NUMBER.

P.A. USAF - AFSC Other Cust Navy - Wep	TITLE FLANGE, DROGUE CONE - TYPE MA-2 RECEPTION COUPLING, FLIGHT PRESSURE REFUELING, OUTLINE DIMENSIONS FOR	MILITARY STANDARD MS24357(ASG)
PROCUREMENT SPECIFICATION MIL-C-25162	SUPERSEDES: USAF 55B9064	

SHEET 1 OF 1

FOR DESIGN FEATURE PURPOSES, THIS STANDARD TAKES PRECEDENCE OVER PROCUREMENT DOCUMENTS REFERENCED HEREIN.
REFERENCED DOCUMENTS SHALL BE OF THE ISSUE IN EFFECT ON DATE OF INVITATIONS FOR BID.