

DESIGN FOR CASTING
OPTIONAL

⑥ DIMENSIONS NOT SHOWN AND MACHINE FINISH SAME AS ABOVE

1. MATERIAL: STEEL PLATE, OR CAST, MUST WITHSTAND A COMPRESSION LOAD OF 100,000 LBS WHEN TESTED PER PROCUREMENT SPECIFICATION.
2. SURFACE ROUGHNESS: A5 FABRICATED UNLESS OTHERWISE SPECIFIED.
3. FINISH: GALVANIZED SEE PROCUREMENT SPECIFICATION.
4. MINIMUM MARKING TO BE PERMANENTLY MARKED ON TOP OF ASSEMBLY: MS PART NO. AND MANUFACTURER NAME, ABBREVIATION OR TRADEMARK.
5. ASSEMBLY IS SUPPLIED WITH 1 MS26577-1 GASKET, 6 3/8 -16 UNC-2A BOLTS, 6 MS21205 WASHERS, 4 10 -24 UNC-2A SCREWS, AND 1 CONNECTOR RETAINER.
6. BREAK ALL SHARP EDGES AND REMOVE ALL BURRS.
7. DIMENSIONS IN INCHES. UNLESS OTHERWISE SPECIFIED. TOLERANCES: DECIMALS $\pm .010$, ANGLES $\pm 5^\circ$.

FOR DESIGN FEATURE PURPOSES, THIS STANDARD TAKES PRECEDENCE OVER PROCUREMENT DOCUMENTS REFERENCED HEREIN. REFERENCED DOCUMENTS SHALL BE OF THE ISSUE IN EFFECT ON DATE OF INVITATIONS FOR BID.

P.A.	AIR FORCE - 11	TITLE	MILITARY STANDARD
Other: Cost		BASE PLATE ASSEMBLY, REMMAY MARKER LAMP	MS24345
⑥	NAVY - AS		
PROCUREMENT SPECIFICATION ILL-D-8944	SUPERSEDES:	AM2532	SHEET 1 OF 2

This military standard is approved by the Department of the Air Force and the Naval Air Systems Command and is mandatory for use by those military activities are required to employ this standard where suitable.

Review activities:
USAF - 88, AFCEC-MC, 69
Navy-A5

DD FORM 672-1 (Limited coordination)
ASU use only

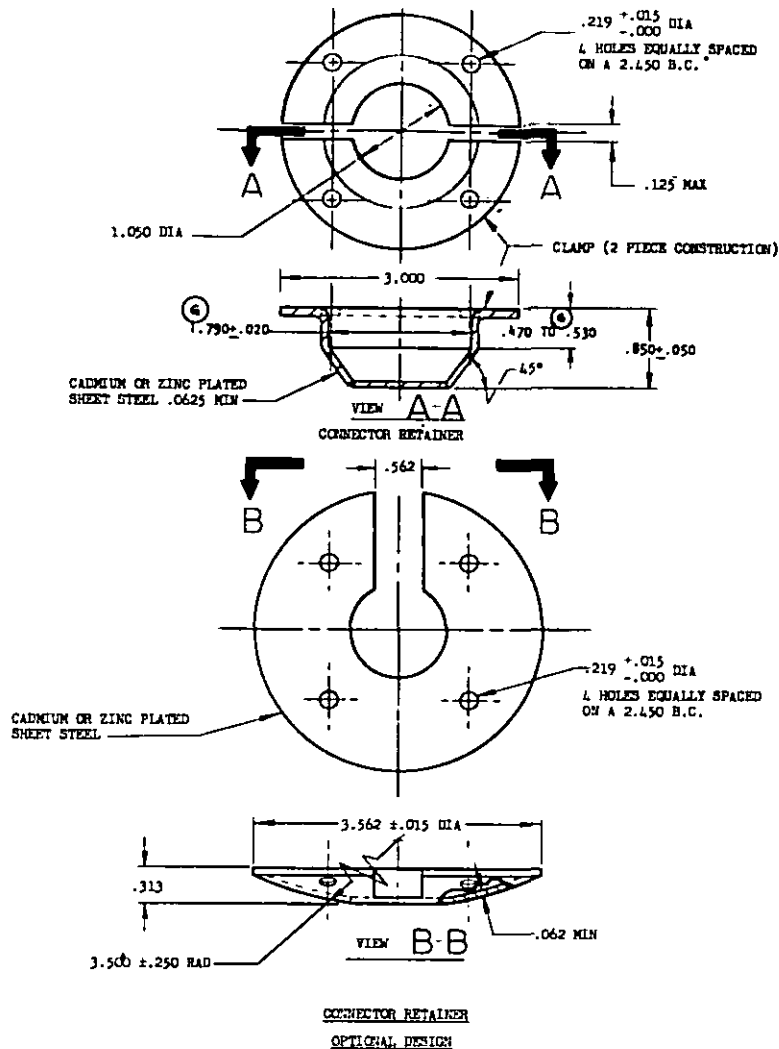
PHOTOGRAPHS TAKEN FROM THE PICTURE ARCHIVE ARE AVAILABLE TO:

APPROVED 15 Feb 56 REVISED (A) 7 Jun 56 (B) 27 Jun 57 (C) 13 May 58 (D) 9 Mar 66 (E) 11 Sept 68 (F) 17 Mar 69 (G) 30 Sept 70

Review activities:
USAF-B2, AFCE-KC, 63
NAVY-AS

This military standard is approved by the Department of the Air Force and the Naval Air Systems Command and is mandatory for use by these activities. All other military activities are required to employ this standard where suitable.

FED. SUP CLASS
6210



APPROVED 15 Feb 56 REVISED (6) FOR CHANGES SEE SHEETS 1 AND 2.

P.A. AIR FORCE-11 Other Comd NAVY-AS	TITLE BASE PLATE ASSEMBLY, RUNWAY MARKER LAMP	MILITARY STANDARD MS24345
PROCUREMENT SPECIFICATION MIL-B-895b	SUPERSEDES: AR2532	SHEET 2

DD FORM 1, SEP 57 672-1 (limited coordination)
ASD use only

PREVIOUS EDITIONS OF THIS FORM ARE OBSOLETE.