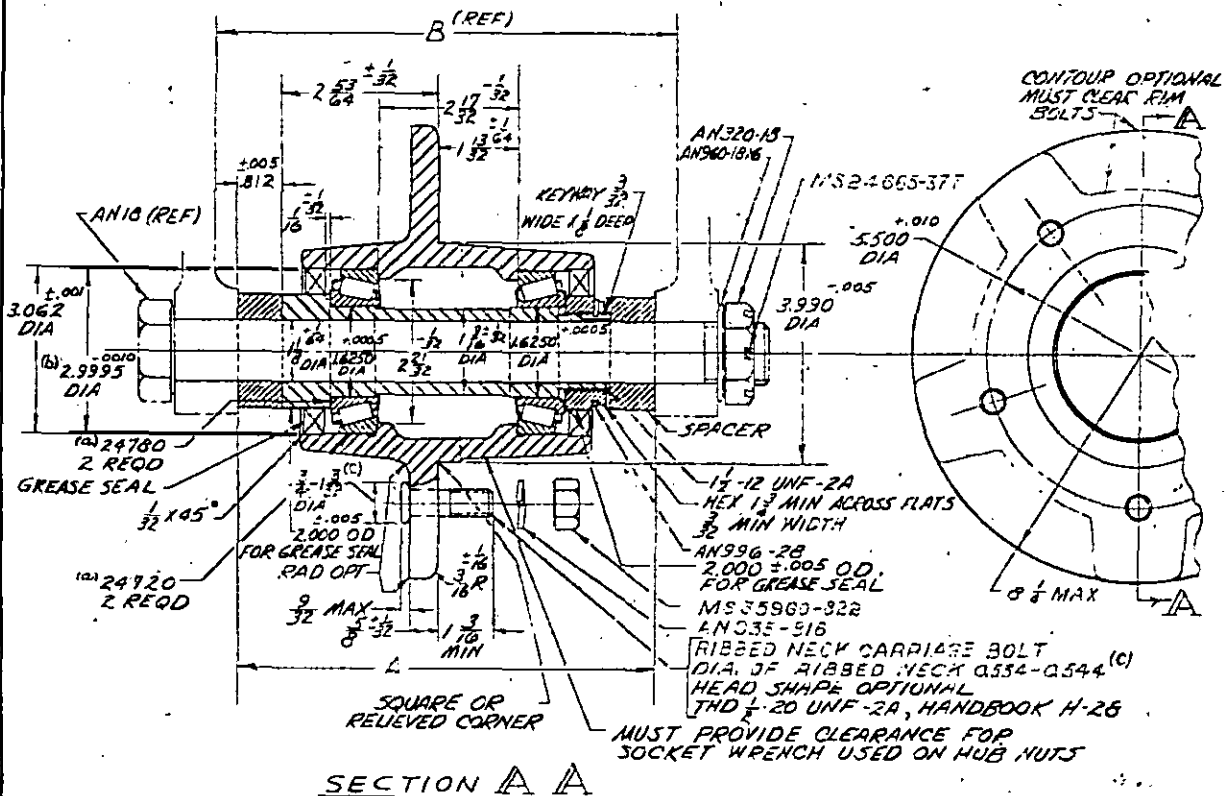


FED. SUP CLASS
2530

MS PART NO.	TYPE	WHEEL SIZE	A -1/32	B MIN	MATERIAL
MS24330-1	WITH SPACERS	7.50-10	7 5/8	8 1/2	STEEL, CAST IRON,
MS24330-2	WITHOUT SPACERS	6.00-9	6	7	OR AL ALLOY

NOTES

- (a) TIMKEN ROLLER BEARING CO PART NO DENOTED OR EQUAL.
- (b) DIMENSION SHOWN IS FOR STEEL OR CAST IRON HUB. FOR ALUMINUM ALLOY USE 2.9970.
- (c) DIAMETER OF RIBBED NECK AND MINIMUM DIAMETER OF LUG-BOLT HEAD SPECIFIED IS NOT MANDATORY UNTIL 1 JULY 1964.
- (d) HUB SHALL FIT WHEELS MS24325 AND MS24326. SEE MS24322.
- (e) ALL DIMENSIONS IN INCHES. UNLESS OTHERWISE SPECIFIED, TOLERANCES ARE ± 0.010 FOR DECIMALS AND $\pm 1/64$ FOR FRACTIONS.
- (f) REFERENCE DOCUMENTS SHALL BE OF ISSUE IN EFFECT ON DATE OF INVITATION FOR BID.
- (g) FOR DESIGN PURPOSES, THIS STANDARD TAKES PRECEDENCE OVER PROCUREMENT DOCUMENTS REFERENCED HEREIN.

ENTIRE STANDARD REVISED

P.A. Other Cust	WRA DOCKS MO	TITLE HUB, ASSEMBLY, FORK MOUNTING, FOR 6.00-9 & 7.50-10 WHEELS	MILITARY STANDARD MS 24330
PROCUREMENT SPECIFICATION MIL-W-3005	SUPERSEDES:	SHEET 1 OF 1	

DD FORM 1 SEP 57 672-1 (Coordinated)

PREVIOUS EDITIONS OF THIS FORM ARE OBSOLETE.

APPROVED 12 JUNE 1956 REVISED (B) 27 JUNE 1963

NOTICE—When Government drawings, specifications, or other data are used for any purpose other than in connection with a definitely related Government procurement operation, the United States Government thereby incurs no responsibility, nor any obligation whatsoever; and the fact that the Government may have furnished, furnished, or in any way supplied the said drawings, specifications, or other data is not to be regarded by implication or otherwise as in any manner licensing the holder or any other person or corporation, or conveying any rights or permission to manufacture, use, or sell any patented invention that may in any way be related thereto.

This military standard is approved by the Department of Defense and is mandatory on all activities. Selection for all new engineering and design applications and for repetitive use shall be made from this document.