

INCH-POUND

MS24286E  
 14 July 2005  
 SUPERSEDING  
 MS24286D  
 5 January 1966

## DETAIL SPECIFICATION SHEET

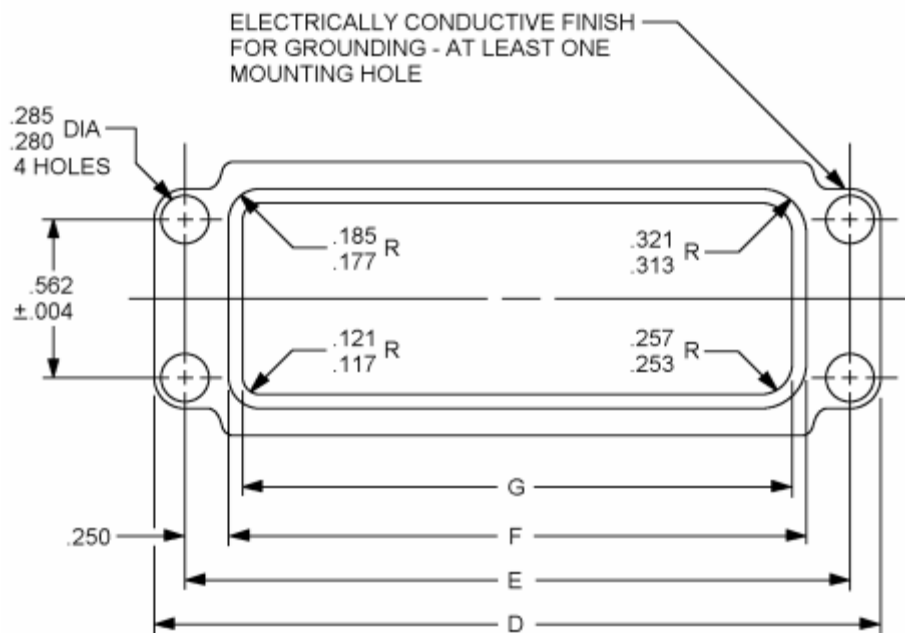
## CONNECTORS, ELECTRICAL, MINIATURE

Inactive for new design after 8 June 1999.

This specification is approved for use by all Departments and Agencies of the Department of Defense.

The requirements for acquiring the product described herein shall consist of this specification sheet and MIL-DTL-26518.

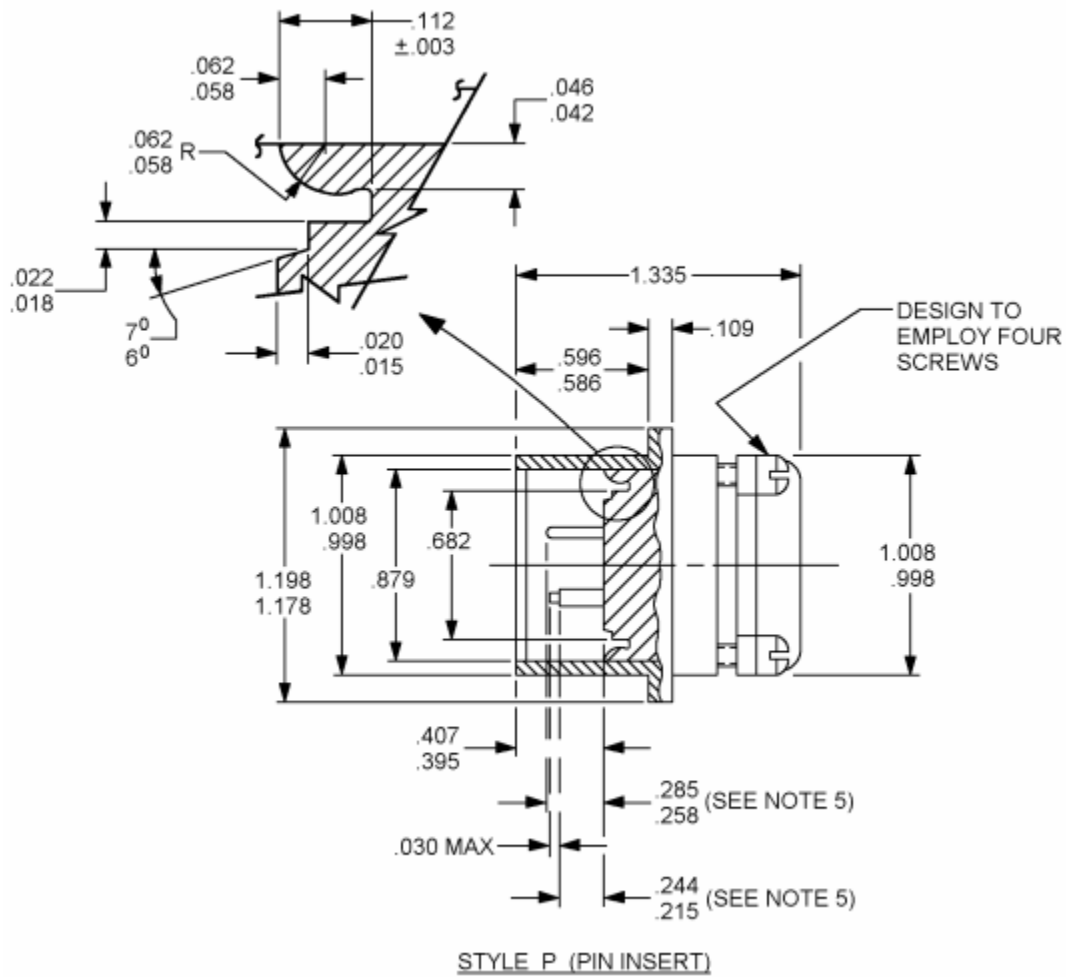
The Qualified Products List (QPL) associated with this inactive for new design specification will be maintained until acquisition of the product is no longer required, where upon the specification and QPL will be canceled.



Style P (pin insert)

FIGURE 1. Connector dimensions and configurations.

## MS24286E



## Environment Resistant (R) Receptacles

Shell size	D ±.005	E ±.004	F ±.005	G
A	4.296	3.875	3.375	3.215
B	2.866	2.445	1.948	1.821
C	2.421	2.000	1.516	1.292

FIGURE 1. Connector dimensions and configurations - Continued.

## MS24286E

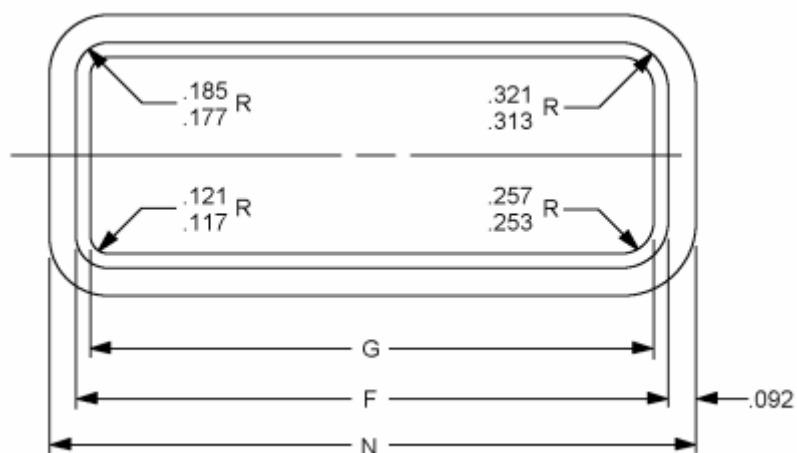
Inches	mm	Inches	mm	Inches	mm
.003	0.08	.185	4.70	.998	25.35
.004	0.10	.215	5.46	1.008	25.60
.015	0.38	.244	6.20	1.178	29.92
.018	0.46	.250	6.35	1.198	30.43
.020	0.51	.253	6.43	1.292	32.82
.022	0.56	.257	6.53	1.335	33.91
.030	0.76	.258	6.55	1.516	38.51
.042	1.07	.285	7.24	1.821	46.25
.046	1.17	.313	7.95	1.948	49.48
.058	1.47	.321	8.15	2.000	50.80
.062	1.57	.395	10.03	2.421	61.49
.109	2.77	.407	10.34	2.445	62.10
.112	2.84	.567	14.40	2.866	72.80
.119	3.02	.586	14.88	3.215	81.66
.121	3.07	.596	15.14	3.375	85.73
.177	4.50	.682	17.32	3.875	98.43
		.879	22.33	4.296	109.11

## NOTES:

1. Dimensions are in inches.
2. Metric equivalents are given for information only.
3. Unless otherwise specified tolerances are  $\pm 0.003$  inch (0.08 mm).
4. For insert arrangements see MS24288.
5. Dimension on socket contact location applies when contacts are placed in inserts for inspection or application.

FIGURE 1. Connector dimensions and configurations - Continued.

## MS24286E



Inches	mm	Inches	mm
.003	0.08	.185	4.70
.015	0.38	.253	6.43
.018	0.46	.257	6.53
.020	0.51	.258	6.55
.022	0.56	.285	7.24
.031	0.79	.313	7.95
.042	1.07	.321	8.15
.046	1.17	.395	10.03
.058	1.47	.407	10.34
.062	1.57	.586	14.88
.092	2.34	.596	15.14
.093	2.36	.682	17.32
.109	2.77	.879	22.33
.117	2.97	.998	25.35
.121	3.07	1.008	25.60
.177	4.50	1.178	29.92
		1.198	30.43

Style P (pin insert)

Hermetic (H) receptacles

FIGURE 2. Connector dimensions and configurations



## MS24286E

Inches	mm	Inches	mm
.005	0.13	.101	2.57
.015	0.38	.102	2.59
.025	0.64	.105	2.67
.035	0.89	.147	3.73
.039	0.99	.153	3.89
.041	1.04	.230	5.84
.048	1.22	.300	7.62
.050	1.27	.68	17.3
.061	1.55	1.392	35.36
.063	1.60	1.516	38.51
.066	1.68	1.685	42.80
.076	1.93	1.821	46.25
.078	1.98	1.945	49.40
.093	2.36	2.130	54.10
.095	2.41	3.251	82.58
.098	2.49	3.375	85.73
		3.560	90.42

## NOTES:

1. Dimensions are in inches.
2. Metric equivalents are given for information only.
3. Unless otherwise specified tolerances are  $\pm 0.003$  inch (0.08 mm).
4. For insert arrangement see MS24288.
5. Dimension on socket contact location applies when contacts are placed in inserts for inspection or application.

FIGURE 2. Connector dimensions and configurations – Continued.

## MS24286E

## REQUIREMENTS:

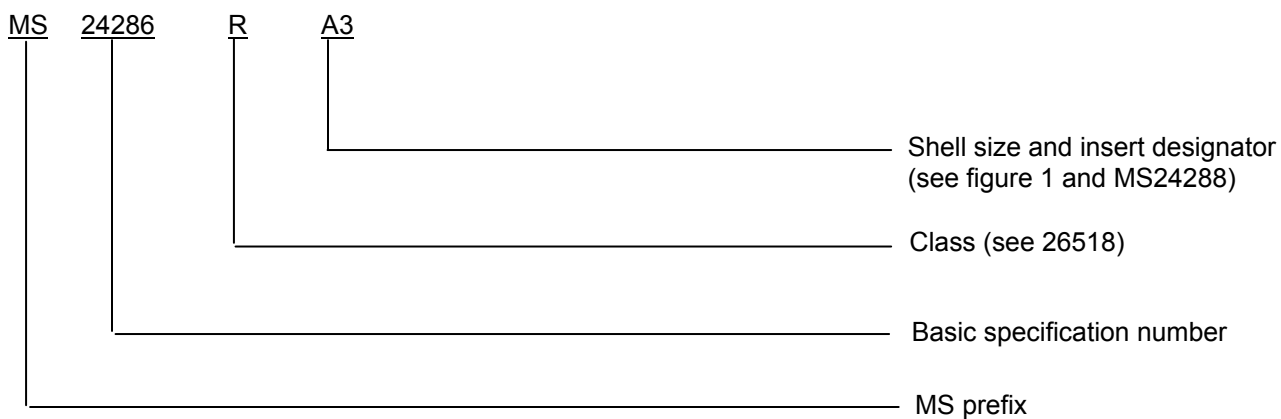
Dimensions and configuration see figure 1.

Materials shall be in accordance with MIL-DTL-26518.

For mating and mounting details see MS24287 and MS24288

Classes

Part or Identifying Number (PIN):



Referenced documents: In addition to MIL-DTL-26518 this document references the following:

MS24287  
MS24288

Changes from previous issue. Marginal notations are not used in this revision to identify changes with respect to the previous issue due to the extent of the changes.

## CONCLUDING MATERIAL

Custodians:  
Air Force - 11  
DLA - CC

Preparing activity:  
DLA - CC

(Project 5935-4696-000)

Review activities:  
DLA - IS

NOTE: The activities listed above were interested in this document as of the date of this document. Since organizations and responsibilities can change, you should verify the currency of the information above using the ASSIST Online database at <http://assist.daps.dla.mil>.