



This military standard is approved for use by Engineering and Technical Support Division, AFLC/L01E, Department of the Air Force and is available for use by all Departments and Agencies of the Department of Defense.

Reviewer activities: AF - 11, 17, 99  
OLA - ES

FED. SUP CLASS 5935			
<p>OPTIONAL SHELL DESIGN FOR CLASSES R, F &amp; G</p> <p>STAINLESS STEEL SHELL DESIGN FOR CLASS E</p> <p>(SEE NOTE d) .085 .073</p> <p>(SEE NOTE e)</p>		APPROVED 26 MAY 1959 REVISED	
P.A. AIR FORCE-85 Other Cust	International Interest	TITLE CONNECTORS, PLUG, ELECTRICAL STRAIGHT; MINIATURE	MILITARY STANDARD MS24266(USAF)
Procurement Specification MIL-C-26500		SUPERSEDES:	PAGE 2 OF 7

This military standard is approved for use by Engineering and Technical Support Division, AFLC/LOIE, Department of the Air Force and is available for use by all Departments and Agencies of the Department of Defense.

Reviewer activities: AF - 11, 17, 99  
DLA - ES

P.A. AIR FORCE-85 Other Cust		International Interest	TITLE CONNECTORS, PLUG, ELECTRICAL STRAIGHT, MINIATURE		MILITARY STANDARD MS24266(USAF)	
Procurement Specification MIL-C-26500		SUPERSEDES:		PAGE 3 OF 7		

SEE PAGE 2 OF 7 FOR DESIGN VARIATIONS

3 HOLES LOCATED WITHIN .004 (T.P.)

120°

120°

SEE NOTE 1

NOTE 1: GROOVES IN COUPLING NUT SHALL BE LOCATED 120° APART AND HELD WITHIN .004 (T.P.). ALTERNATE METHODS OF LOCKING COUPLING NUT IS OPTIONAL.

SEE NOTE f)

STYLE P  
(PIN INSERT)

STYLE S  
(SOCKET INSERT)

LEAD ANGLE (PITCH)  
OF GROOVE OPTIONAL

FED. SUP CLASS  
5935

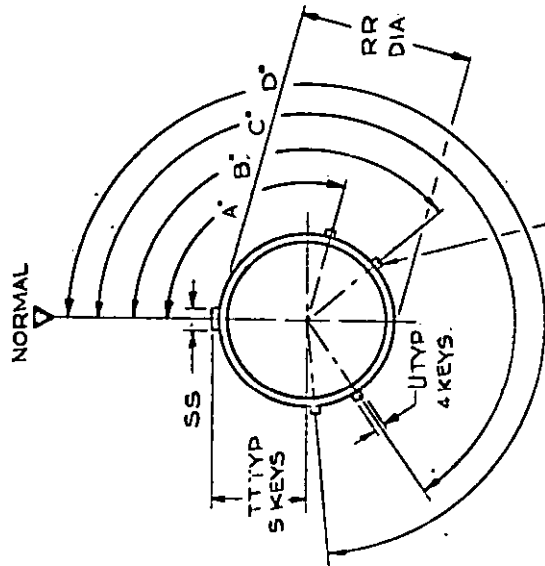
FOR CHANGES SEE PAGE 1

APPROVED 26 MAY 1999 REVISED

FED. SUP CLASS  
5935

This military standard is approved for use by Engineering and Technical Support Division, AFM/LOIE, Department of the Air Force and is available for use by all Departments and Agencies of the Department of Defense.

Reviewer activities: AF - 11, 17, 99  
DLA - ES



4 KEYS (MMC) LOCATED WITHIN  
.004 EITHER SIDE OF (TP) RELATIVE  
TO NORMAL KEY (MMC) AND RR DIA

FACE OF PLUG SHELL

SHELL SIZE	TT	RR	SS	U
	+.000 -.003	+.000 -.005	+.003 -.004	+.003 -.004
8	.234	.424	.084	.042
10	.285	.526	.084	.052
12	.370	.696	.084	.052
14	.485	.765	.084	.052
16	.468	.892	.115	.052
18	.521	.993	.115	.052
20	.583	1.123	.115	.052
22	.646	1.248	.115	.052
24	.708	1.373	.115	.052

POSITION		SIZE 8				SIZE 10				SIZES 12, 14, 16, 18, 20, 22 & 24			
		A	B	C	D	A	B	C	D	A	B	C	D
NORMAL		105	140	215	265	105	140	215	265	105	140	215	265
6		102	132	218	320	102	132	218	320	102	132	218	320
7		80	118	230	312	80	118	230	312	92	152	222	342
8		35	140	205	275	35	140	205	275	84	152	204	334
9		64	155	234	304	64	155	234	304	24	135	199	240
10						25	115	220	270	98	152	268	338

ALTERNATE SHELL KEY POSITIONS FOR PLUG CONNECTORS.

P.A.  
AIR FORCE-85  
Other CustInternational  
Interest

TITLE

CONNECTORS, PLUG, ELECTRICAL  
STRAIGHT, MINIATURE

MILITARY STANDARD

MS24266(USAF)

Procurement Specification  
MIL-C-26500

SUPERSEDES:

PAGE 4 OF 7

DD FORM 672 (LIMITED COORDINATION)  
1 SEP 83

APPROVED 26 MAY 1959 REVISED (K) FOR CHANGES SEE PAGE 1

This military standard is approved for use by Engineering and Technical Support Division, AFLC/LOLE, Department of the Air Force and is available for use by all Departments and Agencies of the Department of Defense.

Reviewer activities: AF - 11, 17, 99  
DLA - ES

P.A. AIR FORCE-85 Other Cust		International Interest	TITLE CONNECTORS, PLUG, ELECTRICAL STRAIGHT, MINIATURE		MILITARY STANDARD MS24266(USAF)	
Procurement Specification MIL-C-26500			SUPERSEDES:		PAGE 5 OF 7	

SHELL SIZE	A UNEF-2B COUPLING THREAD	E MAX. INSERT DIA.	F UNEF-2A ACCESS. THREAD	FF MAX. DIA.	HH MAX. GROMMET DIA.	LL DIA +0.003 -0.000	NN MIN. DIA.	PP MIN. DIA.	R MIN. DIA	T MAX.Q.D. COUPLING NUT	YY MIN. DIA.	FOR INSERT ARRANGEMENT SEE D.A.S.
8	7/16-24	.312	7/16-28	.437	.328	.539	.632	.632	.352	.776	.583	MS27531
10	1/2-24	.388	9/16-24	.562	.420	.662	.760	.760	.428	.908	.757	MS24230
12	7/8-20	.558	3/4-20	.750	.580	.832	.930	.930	.598	1.078	.995	MS24230
14	1 1/8-20	.627	7/8-20	.812	.664	.901	.999	.999	.667	1.141	.957	MS24260
16	1 1/2-18	.754	1 1/8-20	.938	.769	1.028	1.126	1.126	.794	1.266	1.084	MS24261
18	1 3/4-18	.860	1 1/2-18	1.062	.902	1.134	1.232	1.232	.900	1.375	1.203	MS24262
20	2-18	.985	1 3/4-18	1.182	1.033	1.261	1.357	1.357	1.025	1.510	1.334	MS27561
22	2 1/4-18	1.110	2-18	1.312	1.152	1.394	1.482	1.482	1.150	1.625	1.459	MS24263
24	2 1/2-18	1.235	2 1/8-18	1.432	1.282	1.511	1.607	1.607	1.275	1.760	1.534	MS27561

SHELL SIZE	B	C MIN.	D MIN. DIA.
8	.029	.079	.079
10	.031	.084	.084
12	.031	.084	.084
14	.031	.084	.084
16	.031	.084	.084
18	.031	.084	.084
20	.031	.084	.084
22	.031	.084	.084
24	.031	.084	.084

SHELL SIZE	F <sub>1</sub> Thread -36NS-2A	F <sub>1</sub> Pitch Diameter
8	.4340	.4151/.4114
10	.5034	.5434/.5415
12	.7334	.7154/.7115
14	.8032	.7841/.7806
16	.9302	.9110/.9074
18	1.0382	1.0171/1.0134
20	1.1611	1.1431/1.1385
22	1.2862	1.2670/1.2633
24	1.4111	1.3931/1.3885

FED. SUP CLASS  
5935

APPROVED 26 MAY 1959 REVISED (K) FOR CHANGES SEE PAGE 1

FED. SUP CLASS  
5935Reviewer activities: AF - 11, 17, 99  
DLA - ES

This military standard is approved for use by Engineering and Technical Support Division, AFM/LOIE, Department of the Air Force and is available for use by all Departments and Agencies of the Department of Defense.

WEIGHT CHART					
MAXIMUM CONNECTOR WEIGHT IN LBS.					
PIN INSERT			SOCKET INSERT		
MS PART NUMBER	LESS CONTACTS	WITH CONTACTS	MS PART NUMBER	LESS CONTACTS	WITH CONTACTS
MS24266R 8T2PN	.028	.030	MS24266R 8T2SN	.029	.031
10T2PN	.040	.042	10T2SN	.041	.043
10T5PN	.039	.043	10T5SN	.040	.044
10T20PN	.040	.044	10T20SN	.041	.045
12T3PN	.055	.060	12T3SN	.057	.062
12T12PN	.053	.063	12T12SN	.054	.064
14T3PN	.039	.069	14T3SN	.061	.070
14T4PN	.059	.074	14T4SN	.061	.076
14T7PN	.059	.072	14T7SN	.061	.072
14T12PN	.059	.072	14T12SN	.061	.074
14T15PN	.059	.073	14T15SN	.061	.074
16T10PN	.072	.090	16T10SN	.071	.089
16T24PN	.071	.091	16T24SN	.074	.094
18T8PN	.081	.110	18T8SN	.084	.112
18T11PN	.078	.102	18T11SN	.082	.105
18T14PN	.078	.103	18T14SN	.082	.107
18T21PN	.078	.104	18T21SN	.082	.107
20T16PN	.038	.126	20T16SN	.101	.129
20T25PN	.095	.133	20T25SN	.099	.136
20T28PN	.097	.132	20T28SN	.099	.133
20T39PN	.097	.132	20T39SN	.099	.133
20T41PN	.097	.131	20T41SN	.099	.133
22T12PN	.110	.153	22T12SN	.117	.156
22T18PN	.110	.154	22T18SN	.117	.150
22T32PN	.110	.153	22T32SN	.117	.160
22T55PN	.106	.153	22T55SN	.112	.157
24T43PN	.129	.184	24T43SN	.134	.188
24T57PN	.128	.181	24T57SN	.133	.185
MS24266R 24T61PN	.125	.176	MS24266R 24T61SN	.131	.181

## THREADED CONNECTORS CLASSES FG &amp; R

APPROVED 26 MAY 1959 REVISED (K) FOR CHANGES SEE PAGE 1

P.A. AIR FORCE-85 Other Cust	International Interest	TITLE CONNECTORS, PLUG, ELECTRICAL STRAIGHT, MINIATURE	MILITARY STANDARD MS24266(USAF)
Procurement Specification MIL-C-26500	SUPERSEDES:		PAGE 6 OF 7

DD FORM 672 (LIMITED COORDINATION)  
1 SEP 63

FED. SUP CLASS  
5935

ALL DIAMETERS TO BE CONCENTRIC WITH EACH OTHER WITHIN .015 T.I.R.

ALL DIAMETERS IN THE SAME PLANE TO BE CONCENTRIC WITH EACH OTHER WITHIN .004 T.I.R.

CONTACTS TO BE IN ACCORDANCE WITH SPEC. MIL-C-26636.

TRUE POSITION (TP) TOLERANCE SPECIFIED ARE FOR MAXIMUM MATERIAL CONDITIONS (M.M.C.)

(a) DISTANCE BETWEEN END OF SHELL AND THE POINT AT WHICH A GAGE PIN, HAVING THE SAME BASIC DIAMETER AS THE MATING CONTACT AND A SQUARE FACE, ENGAGES SOCKET CONTACT SPRING.

(b) DIMENSIONS ON PIN AND SOCKET CONTACT LOCATIONS AND INSERT FACES APPLY WHEN CONTACTS ARE PLACED IN INSERTS FOR INSPECTION OR APPLICATION.

(c) .071 MAY REDUCE TO .056 MIN. UNDER PRESSURES CAUSED BY MOLDED CABLE ASSEMBLIES OR SHARP CABLE BENDS.  
FOR ACCESSORIES USED WITH THIS CONNECTOR SEE PARAGRAPH 3.4.7 OF PROCUREMENT SPECIFICATION.

DIMENSIONS IN INCHES, UNLESS OTHERWISE SPECIFIED TOLERANCES - DECIMALS -  $\pm .005$

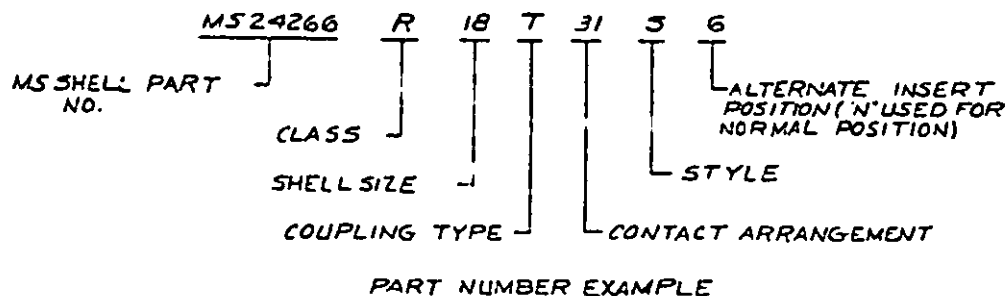
REFERENCED DOCUMENTS SHALL BE THE ISSUE IN EFFECT ON DATE OF INVITATIONS FOR BID.

THIS STANDARD TAKES PRECEDENCE OVER DOCUMENTS REFERENCED HEREIN.

USE TOOL MS24256A TO ASSEMBLE CONTACTS INTO THIS CONNECTOR

USE TOOL MS24256R TO REMOVE CONTACTS FROM THIS CONNECTOR

- (d) THREAD RELIEF GROOVE IS OPTIONAL ON SHELL. WHEN GROOVE IS OMITTED, THE LENGTH OF FULL THREAD FROM REAR OF SHELL WILL BE .221 MINIMUM
- (e) ENVIRONMENT RESISTANT (CLASS F & R) PLUGS, TYPE "T"-ALUMINUM SHELL MATERIAL. GROUNDING ENVIRONMENT RESISTANT (CLASS G) PLUGS, TYPE "T"-ALUMINUM SHELL MATERIAL. GROUNDING ENVIRONMENT RESISTANT (CLASS G & E) PLUGS, TYPE "T"-STAINLESS STEEL MAT'L
- (f) ENVIRONMENT RESISTANT (CLASS F & R) PLUGS, TYPE "B"-ALUMINUM SHELL MATERIAL. GROUNDING ENVIRONMENT RESISTANT (CLASS G) PLUGS, TYPE "B"-ALUMINUM SHELL MAT'L. GROUNDING ENVIRONMENT RESISTANT (CLASS G & E) PLUGS, TYPE "B"-STAINLESS STEEL SHELL MAT'L.



This military standard is approved for use by Engineering and Technical Support Division, AFM/LOIE, Department of the Air Force and is available for use by all Departments and Agencies of the Department of Defense.

Reviewer activities: AF - 11, 17, 99  
DLA - ES

P.A. AIR FORCE- 85 Other Cust	International Interest	TITLE CONNECTORS, PLUG, ELECTRICAL STRAIGHT, MINIATURE	MILITARY STANDARD
			MS24266(USAF)
Procurement Specification MIL-C-26500		SUPERSEDES:	PAGE 7 OF 7

DD FORM 1 SEP 83 672 (LIMITED COORDINATION)

APPROVED 26 MAY 1959 REVISED (X) FOR CHANGES SEE PAGE 1