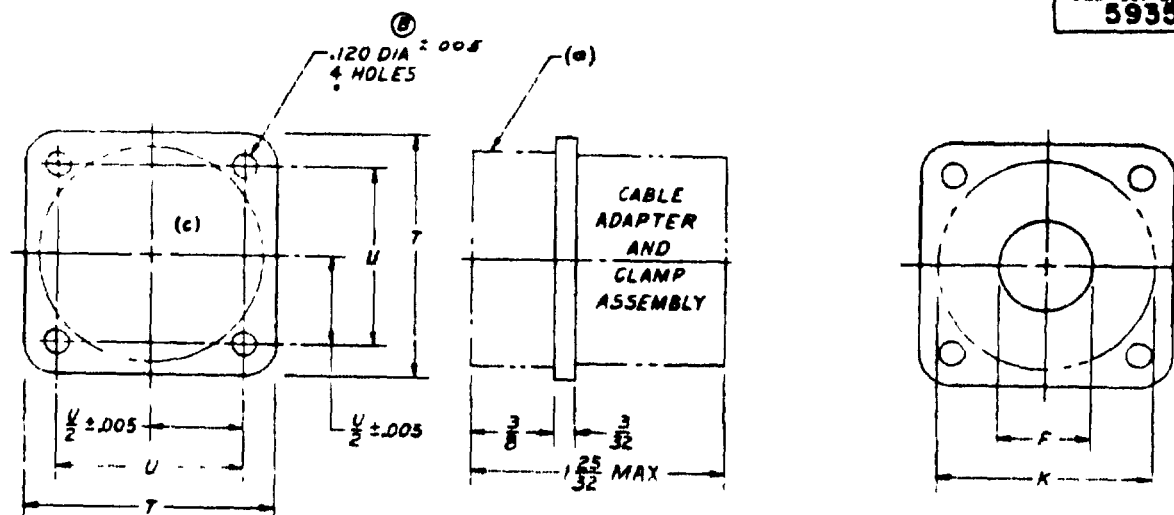


FED. SUP. CLAS.
5935

(a) SIZE	F MINIMUM CABLE ENTRY INSIDE DIA.	K MAXIMUM ACROSS CLAMP AND ADAPTER DIA.	T ± 1/32	U ± .005
16	25/64	1 3/32	1/8	.643
16L	25/64	1 3/32	1 1/4	.676
18	33/64	(B) 1 3/8	1/4	.872
18L	33/64	(B) 1 3/8	1/2	1.219
21	41/64	1 17/32	1 1/16	1.062
21L	41/64	1 17/32	1 1/8	1.287

(B)

(a) MATING DIMENSIONS, MALE THREAD, IN ACCORDANCE WITH

(1) MS24243M FOR PIN CONTACTS, "M" IN PART NUMBER, OR
 (2) MS24243S FOR SOCKET CONTACTS, "S" IN PART NUMBER

(b) SHELL SIZE AS SPECIFIED IN CONNECTOR PART NUMBER.

(c) INSERT ARRANGEMENT IN ACCORDANCE WITH MS24242. INSERT ARRANGEMENT
 NUMBER CORRESPONDING TO SHELL SIZE AND AS SPECIFIED IN CONNECTOR PART NUMBER.
 ALTERNATE INSERT POSITION IF APPLICABLE, AS SPECIFIED IN CONNECTOR PART NUMBER.
 EXAMPLE OF CONNECTOR PART NUMBERS: SEE MIL-C-25955.

(B)

DIMENSIONS IN INCHES UNLESS OTHERWISE SPECIFIED.
 TOLERANCES DECIMALS ± .002, FRACTIONS ± 1/32, ANGLES ± 1/2°.

CONTACTS SUPPLIED WITH BUT NOT INSTALLED IN CONNECTORS.

APPROVED 9 JAN 58 REVISED (A) 27 MAY 58 (B) 18 OCT 60

CUSTODIANS
 A -
 N -
 M -

OTHER INT
 A -
 N -
 M -

MILITARY STANDARD

CONNECTOR-RECEPTACLE, ELECTRICAL, WALL MOUNTED

MS24234
(USAF)

SHEET 1 OF 1

REVISIONS
 1. 100% 674-1
 1 OCT 52

When Government drawings, specifications, or other data are used for any purpose other than in connection with a definitely related Government procurement operation, the United States Government hereby incurs no responsibility and the fact that the Government may have furnished, or may be supplying, the said drawings, specifications, or other data is not to be regarded by implication or otherwise as an endorsement, approval, or recommendation of the product or of the manufacturer thereof, or as a warranty of the quality of the product or of the manufacturer thereof.