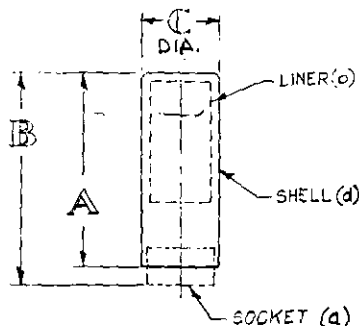


FED. SUP CLASS  
5960

MS PART NO.	A + 0 - 1/16	B MAX	DIA. C ± .015	WEIGHT (GRAMS) (c) MAX.	TUBE ENVELOPE		SOCKET REF. (a)
					STYLE (f)	NOM. LENGTH	
MS24233-1	1 1/2	1.625	.875	9.5	T- 5 1/2	1 1/8	TS-102
MS24233-2	2	2.125	.875	12.4	T- 5 1/2	1 1/2	TS-102
MS24233-3	2 1/2	2.625	.875	15.4	T- 5 1/2	2	TS-102
MS24233-4	1 1/2	1.625	1.000	10.5	T- 6 1/2	1 1/8	TS-103
MS24233-5	2	2.125	1.000	13.7	T- 6 1/2	1 9/16	TS-103
MS24233-6	2 1/2	2.625	1.000	18.5	T- 6 1/2	2	TS-103
MS24233-7 (e)	2 3/4	2.875	1.000	19.5	T- 6 1/2		TS-103

- (a) THESE SHIELDS ARE PRIMARILY FOR RETROFITTING PRESENT EQUIPMENT WHICH USE THE ABOVE MIL-S-12883 TYPE SOCKETS.
- (b) LINER MATERIAL: BERYLLIUM COPPER, SPEC. QQ-C-533.  
FINISH: BLACK CAD. PLATE, SPEC. QQ-P-416, CLASS I TYPE II, OPTIONAL FINISH: HENDERLUBE (OR EQUAL)
- (c) WEIGHT OF SHIELD ASSEMBLY LESS BASE
- (d) SHELL MATERIAL: HIGH HEAT CONDUCTING-NONMAGNETIC TYPE.  
FINISH: ANODIZE DULL BLACK SPEC. MIL-A-8625., OPTIONAL FINISH: HENDERLUBE (OR EQUAL) THE I.D. OF SHELL ON BOTTOM FOR APPROX. 5/8 INCH. WILL BE FREE OF FINISH FOR PURPOSE OF ELECTRICAL CONTACT.
- (e) THIS SHIELD IS FOR USE WITH MOVAL TUBES WHICH ARE LONGER THAN USUAL TUBES. FOR EXAMPLE, TUBE TYPE 6094.
- (f) PER MIL-E-1 BULB OUTLINES

THE DESIGN OF THIS SHIELD IS LIMITED ONLY BY THE OVERALL DIMENSIONS OF A, B & C.

THE DESIGN OF THE SHIELD, LOCKING MECHANISM, LINER, AND OTHER PARTS SHALL BE DESIGNED TO MEET THE REQUIREMENTS OF MIL-S-9372 AND TO FIT MIL-S-12883 SOCKET.

DIM A REFERS TO OVERALL LENGTH OF SHELL. LINER IS NOT FULL LENGTH OF SHELL.

DIM B REFERS TO OVERALL LENGTH OF SHIELD ASSEMBLY SEATED ON A MIL-S-12883 SOCKET.

DIM C REFERS TO O.D. OF SHELL.

INSTALLATION FORCE SHALL NOT EXCEED 20 LBS.

NO TOOL REQUIRED FOR APPLICATION OR REMOVAL OF SHIELD FROM TUBE AND MOUNTING BASE.

SHIELD BOTTOM SHALL MAKE GOOD ELECTRICAL AND THERMAL CONTACT WITH MOUNTING BASE.

TOP END OF SHIELD SHALL BE OPEN.

DIMENSIONS IN INCHES.

REFERENCE PARAGRAPH 3.9, MIL-S-9372: INSERT LINERS WITH CONTINUOUS CIRCUMFERENTIAL CORRUGATIONS, THAT DO NOT PERMIT SPRING ACTION WITHIN THE SHIELD, ARE NOT ACCEPTABLE

Ⓒ CANCELED AFTER 18 MARCH 1968.  
REQUIREMENTS OF MS 24233(USAF)  
ARE COVERED IN MIL-S-24251/6

NOTICE—When Government drawings, specifications, or other data are used for any purpose other than in connection with a definitely related Government procurement operation, the United States Government hereby incurs no responsibility, nor any obligation whatsoever, and the fact that the Government may have furnished, furnished, or in any way supplied this and drawing, specifications, or other data is not to be regarded by implication or otherwise as in any manner licensing the holder or any other person or corporation, or conveying any rights, or permission to manufacture, use, or sell any patented invention that may in any way be related thereto.

This standard has been approved by the Department of the Army and is mandatory for use by that activity. All other military activities are required to employ this standard where suitable.

P.A. AF - 11	TITLE	MILITARY STANDARD
Other Cust	SHIELD - ELECTRON TUBE - HEAT DISSIPATING (7 AND 9 PIN MINIATURE - RETROFIT)	MS24233(USAF)
PROCUREMENT SPECIFICATION MIL-S-9372	SUPERSEDES:	SHEET 1 OF 1

DD FORM 672-1 (Limited coordination)

PREVIOUS EDITIONS OF THIS FORM ARE OBSOLETE.

☆ U. S. GOVERNMENT PRINTING OFFICE: 1968-301-519/5492

APPROVED 29 JAN 58 REVISED (A) 3 MAY 61 (B) 25 APR 63 (C) 18 MARCH 68