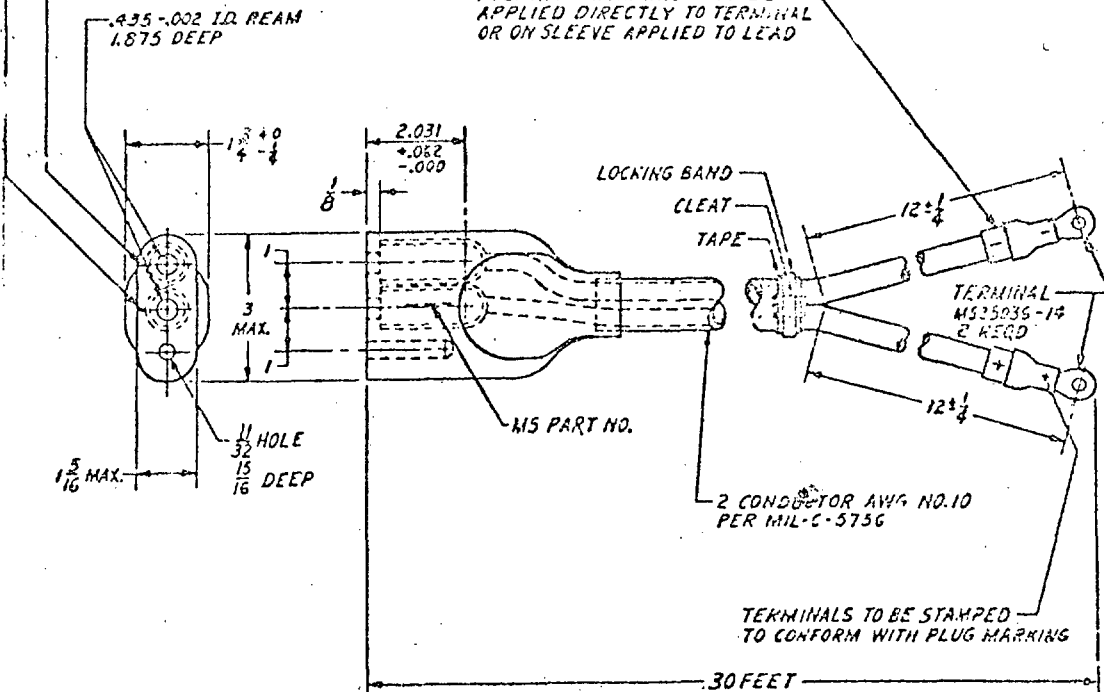


REV. SUP. CLASS.
6150—PERMANENT MARK FOR
POSITIVE CONTACT.PERMANENT MARK FOR
NEGATIVE CONTACT.435-.002 I.D. REAM
1.875 DEEPPOLARITY MARKING MAY BE
APPLIED DIRECTLY TO TERMINAL
OR ON SLEEVE APPLIED TO LEADⒶ CANCELED
STANDARD

AFTER 25 MAY 1978

NO SUPERSEDING

MS PART NO.	FIIN
MS24217-1	

ALL SOCKET CONTACTS SHALL HAVE A SIDE PLAY OF .017 INCH AND SHALL PROVIDE SPRING ACTION TO MAINTAIN CONTACT PRESSURE.

MATERIAL: CONTACTS; TELLURIUM COPPER OR EQUAL.

LOCKING BAND; STAINLESS STEEL TYPE 302, 1/2 WIDE, .015 THICK.

TAPE; MINNESOTA MILLING AND MINING COMPANY SCOTCH NO. 22 ELECTRICAL TAPE OR EQUAL.

PLUG; MOLDED OR FABRICATED BUNA COMPOUND OR OTHER MATERIAL SUITABLE FOR OPERATION AT -65°F.

DIMENSIONS IN INCHES, UNLESS OTHERWISE SPECIFIED, TOLERANCES: FRACTIONS $\pm \frac{1}{8}$, DECIMALS $\pm .000$.

SEE DRAWING AN2552 FOR RECEPTACLE USED WITH THIS CABLE.

CUSTODIANS
Navy - BuAer
Air Force
AIR
FORCE

OTHER INT.
A-
N-
AF-

MILITARY STANDARD

CABLE ASSEMBLY-POWER ELECTRICAL, 28VOLT DC
POWER

MS24217
(USAF)

REQUIREMENT SPECIFICATION
MIL-C-7974

SUPERSEDED:

SHEET 1 OF 1

DD FORM 672-1

APPROVED 2 FEB 56 REVISED 25 MAY 1978

NOTICE: When Government drawings, specifications, or other data are used for any purpose other than in connection with a definitely related Government procurement operation, the United States Government thereby incurs no responsibility, nor any obligation whatsoever; and the fact that the Government may have furnished, furnished, or in any way supplied the said drawings, specifications, or other data is not to be regarded as an endorsement or approval of the views or opinions expressed, or as implying any rights or privileges in any way related thereto.