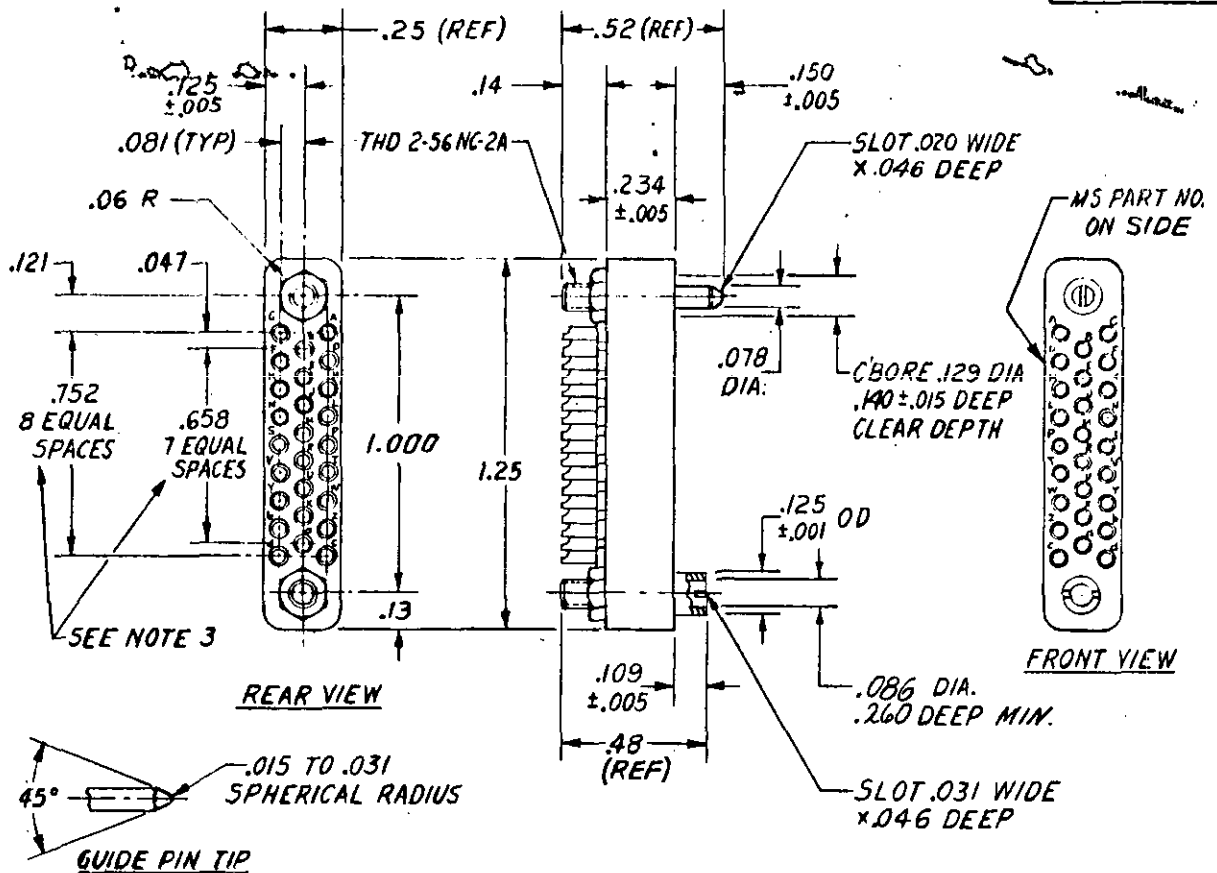


Reviewer user information is current as of the date of this document. Future changes to this document, draft circulation should be based on the information in the current DCISS. PFC listing: AF 11 17 80, 11 ARMY MJ 11 E 11 NAVY MJ 11 S 11 M 11



MS PART NUMBER	VOLTAGE RATING AT 60 CPS		TEMPERATURE RATING
	AT SEA LEVEL VOLTS	AT 70,000 FT. VOLTS	
MS24049-1	Not approved for use		125
MS24049-2	350	90	150
MS24049-3	350	90	200

NOTES:

1. MATING CONNECTOR IS MS24050.
2. FORCE REQUIRED TO INSERT OR WITHDRAW MATING CONNECTOR IS 12 LBS. MAX.
3. MAXIMUM TOLERANCE BETWEEN ANY TWO MOLDED CONTACT CENTERS IS $\pm .002$.
4. APPLICABLE TOP CABLE OPENING IS MS24130-3.
5. ALL DIMENSIONS IN INCHES. UNLESS OTHERWISE SPECIFIED, TOLERANCES ARE $\pm .01$, OR $\pm .002$, AS APPLICABLE, ON DECIMALS AND $\pm 1/2^\circ$ ON ANGLES.
6. REFERENCED DOCUMENTS SHALL BE OF THE ISSUE IN EFFECT ON THE DATE OF INVITATION FOR BIDS.
7. THIS STANDARD TAKES PRECEDENCE OVER DOCUMENTS REFERENCED HEREIN.
8. AT THE OPTION OF THE MANUFACTURER, A LAND, BOSS, OR PAD OF 0.010 INCH MAXIMUM MAY BE ADDED TO THE MATING FACE OF THE MOLDING FOR PROTECTION OF RAISED LETTERS WHERE USED.

Ⓕ CANCELLED AFTER 15 OCT 1975 USE M28748/8-E00GIA

P.A. AF-85	TITLE	MILITARY STANDARD
Other Cust ARMY - EL NAVY - EC	CONNECTOR, PLUG-RECEPTACLE, ELECTRICAL, RECTANGULAR, 26 CONTACTS, FEMALE, 3 AMPS.	MS24049
PROCUREMENT SPECIFICATION MIL - C - 8384	SUPERSEDES: MS24049 USAF	SHEET 1 OF 1