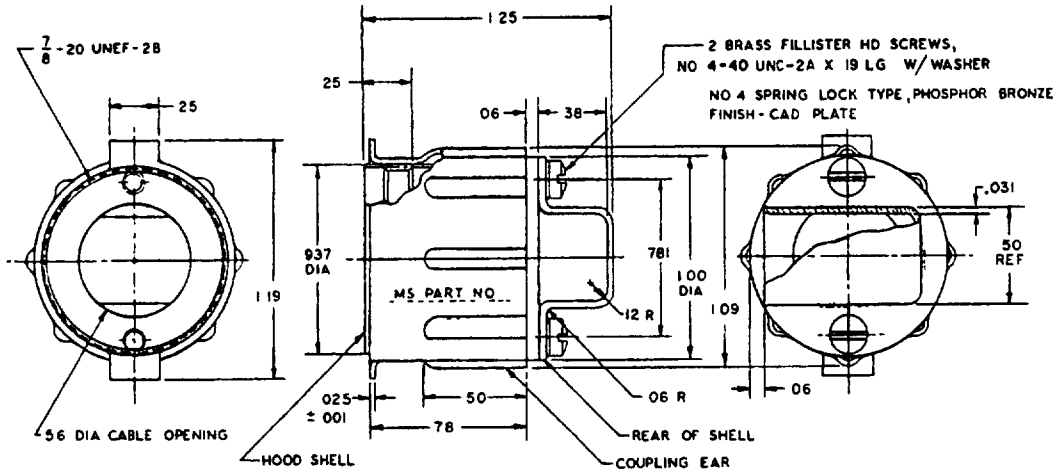


FED SUP CLASS
5935

INCHES	MM	INCHES	MM	INCHES	MM
.001	.03	.25	6.35	.781	19.84
.025	.64	.38	9.65	.937	23.80
.031	.79	.44	11.18	1.00	25.40
.06	1.52	.50	12.70	1.09	27.69
.12	3.05	.56	14.22	1.19	30.23
.19	4.83	.78	19.81	1.25	31.75

MS Part No MS24129-1

INACTIVE FOR NEW DESIGN

(C)

AFTER 6 DECEMBER 1971

NOTES:

1. Material - Brass, spec. QQ-B-613, comp. 2, half hard finish. Cadmium plate, spec. QQ-P-416, type II, class 3.
2. MS24129-1 to be used in conjunction with MS24128-1 (ring-coupling, fixed) and MS24127-1 (nut-plain).
3. Coupling ear to be free and independent of hood shell.
4. The rear of shell shall be made detachable for maintenance purposes.
5. All dimensions in inches: Unless otherwise specified, tolerances are $\pm .02$ (.51 mm) for two place decimals, and $\pm .005$ (.13 mm) for three place decimals.
6. Referenced documents shall be of the issue in effect on the date of invitation for bids.
7. This standard takes precedence over documents referenced herein.
8. Group A and B inspection is required in lieu of qualification.

(C) REDRAWN

P A NAVY-EC	International interest	TITLE	MILITARY STANDARD
Other Cust AF-80		HOOD, ELECTRICAL CONNECTOR,	
ARMY-EL		RIGHT ANGLE	MS24129
Procurement Specification		SUPERSEDES	SHEET 1 OF 1
MTI-C-28748			

DD FORM 672 (Coordinated) PREVIOUS EDITIONS OF THIS FORM ARE OBSOLETE

5935-1722-12

User activities
Army ME, AM, WC
Navy MC, SH
Air ForceReviewer activities
Army MI, MU, AT
Navy AS, OS
Air Force II

This military standard is mandatory for use by all Departments and Agencies of the Department of Defense. Selection for all new engineering and design applications and for repetitive use shall be made from this document.

APPROVED 31 AUG 1954 REVISED (C) 6 Dec 1971