

Army ME, AM, WC
Navy MC, SH
Air Force

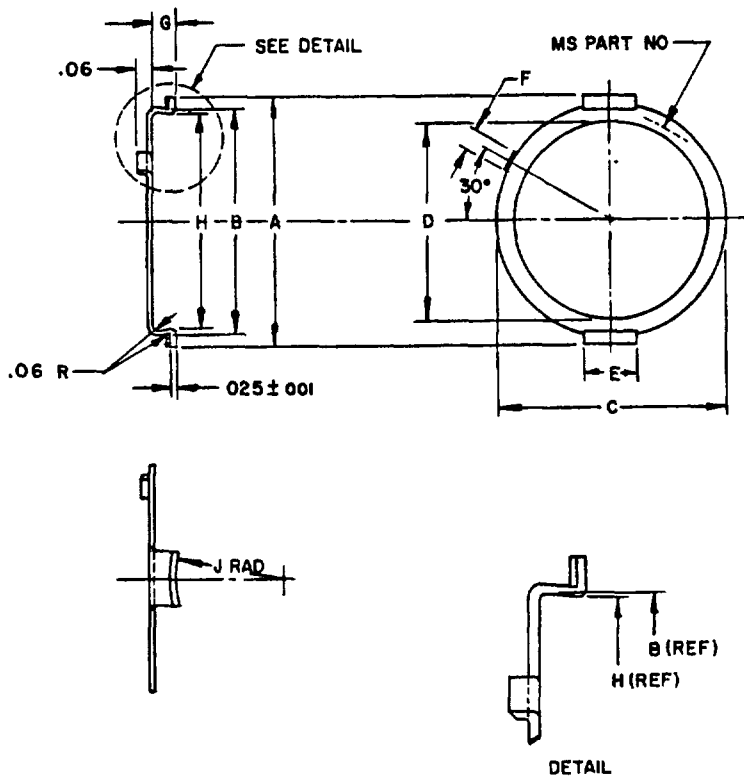
User activities

Army MI, MU, AT
Navy AS, OS
Air Force II

Reviewer activities

This military standard is mandatory for use by all Departments and Agencies of the Department of Defense. Selection for all new engineering and design applications and for repetitive use shall be made from this document

FED SUP CLASS
5935



INCHES	MM
.001	.03
.010	.25
.015	.38
.025	.64
.06	1.52
.09	2.29
.11	2.79
.25	6.35
.28	7.11
.380	9.65
.47	11.94
.473	12.01
.50	12.70
.507	12.88
.567	14.40
.59	14.99
.62	15.75
.66	16.76
.72	18.29
.882	22.40
.942	23.93
.97	24.64
1.06	26.92
1.12	28.45

MS PART NUMBER	A	B	C Dia.	± 0.010 D Dia.	E	F	G	H ± 0.015	J Rad
MS24057-1	.62	.50	.47	.380	.25	.09	.09	.473	.28
MS24057-2	.72	.59	.66	.507	.25	.09	.09	.567	.28
MS24057-3	1.12	.97	1.06	.882	.25	.09	.11	.942	.50

(C) INACTIVE FOR NEW DESIGN
AFTER 6 DECEMBER 1971

NOTES:

1. Material - Brass, spec QQ-B-613, comp. 2, quarter hard.
Finish - Cadmium plate, spec. QQ-P-416, type II, class 3.
2. Dimensions in inches Unless otherwise specified, tolerances are ± 0.02 (.51 mm) for two place decimals and $\pm 1^\circ$ for angles
3. Referenced documents shall be of the issue in effect on the date of invitation for bids.
4. This standard takes precedence over documents referenced herein
5. The MS part number marking required on the item may be omitted by marking the packages or tagging the parts per MIL-STD-130.
6. Group A and B inspection is required in lieu of qualification

(C) REDRAWN

P A NAVY-EC	International interest	TITLE	MILITARY STANDARD
Other Cust AF-80 ARMY-EL		COUPLING-EAR	MS24057
Procurement Specification MIL-C-28748		SUPERSEDES:	SHEET 1 OF 1

DD FORM 672 (Coordinated) PREVIOUS EDITIONS OF THIS FORM ARE OBSOLETE
10 APR 64

5935-1722-9

APPROVED 12 AUG 54 REVISED (C) 6 Dec 1971