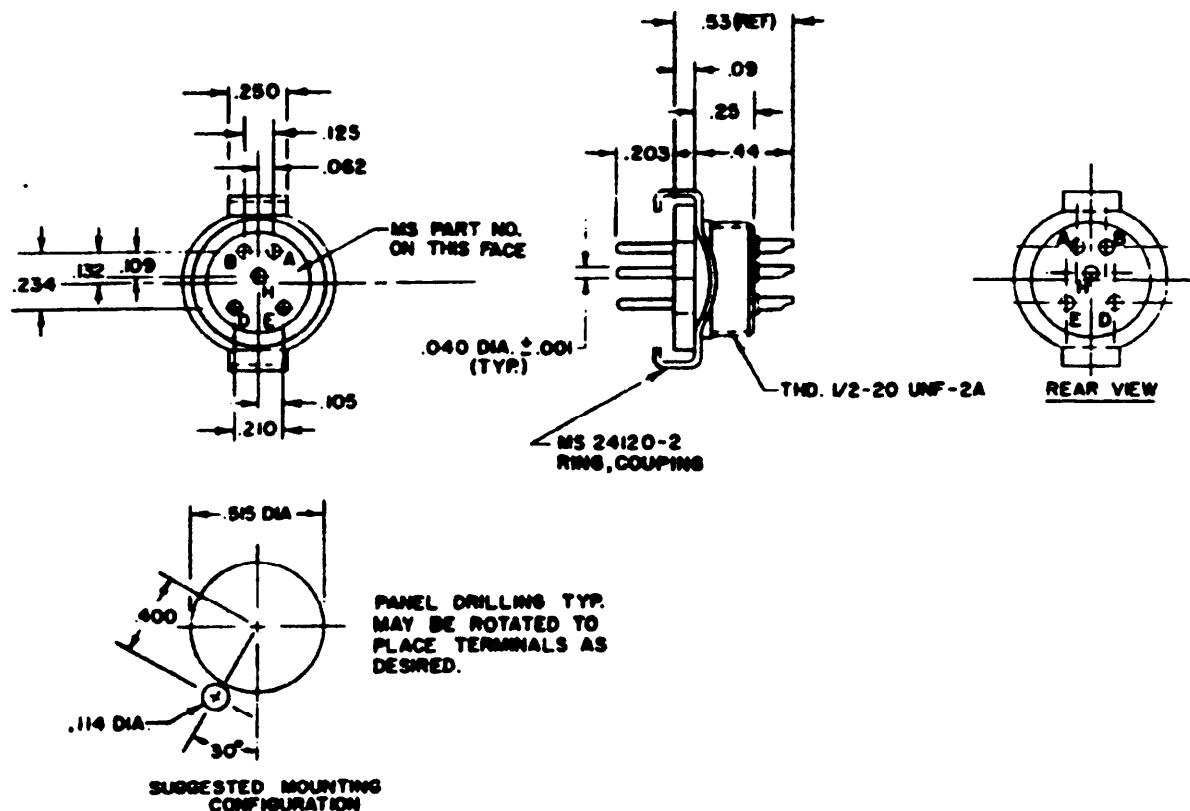


FED. SUP CLASS
8935

Revisions/user information is current as of the date of this document. For future coordination of changes to this document, draft circulation should be based on the information in the current DOCSIS (FSC listing).
AF 11 17 11 85 11 ARMY MU II EL II NAVY WP II SH (C) MC (C)



MS PART NUMBER	VOLTAGE RATING AT 60 CPS				TEMPERATURE RATING °C
	AT SEA LEVEL VOLTS		AT 70,000 FT. VOLTS		
	A-B	E-D	A-B	E-D	
MS24038-1	NOT APPROVED FOR USE				125
MS24038-2	425	800	100	175	150
MS24038-3	425	800	100	175	200

NOTES:

1. MATING CONNECTOR IS MS24037.
2. FORCE REQUIRED TO INSERT OR WITHDRAW MATING CONNECTOR IS 7 LBS. MAX.
3. MAXIMUM TOLERANCE BETWEEN ANY TWO MOLDED CONTACT CENTERS IS ±.002.
4. APPLICABLE HOODS PER MS24018.
5. WITHOUT MS24120-2, CONNECTOR MAY BE PANEL MOUNTED, USING MS24017-2 AND A LOCKWASHER, INTERNAL TOOTH, PHOSPHOR BRONZE, SHAKEPROOF NO. 1924-02-00, OR EQUAL.
6. ALL DIMENSIONS IN INCHES. UNLESS OTHERWISE SPECIFIED, TOLERANCES ARE ±.02 OR ±.005, AS APPLICABLE, ON DECIMALS AND ±1/2° ON ANGLES.
7. REFERENCED DOCUMENTS SHALL BE OF THE ISSUE IN EFFECT ON THE DATE OF INVITATION FOR BIDS.
8. THIS STANDARD TAKES PRECEDENCE OVER DOCUMENTS REFERENCED HEREIN.
9. THE MS PART NUMBER MARKING REQUIRED ON THE ITEM MAY BE OMITTED BY MARKING THE PACKAGES OR TAGGING THE PARTS PER MIL-STD-130.

(C) ENTIRE STANDARD REVISED

P.A.	AF-11	TITLE	MILITARY STANDARD
Other Cost	ARMY-EL NAVY-WEPB	CONNECTOR, PLUG-RECEPTACLE, ELECTRICAL, HEXAGONAL, 5 CONTACTS, MALE, 7.5 AMPS.	MS24038
PROCUREMENT SPECIFICATION MIL-C-8384	SUPERSEDES	MS 24038 USAF	SHEET 1 OF 1

This military standard is approved by the Department of Defense and is mandatory on all activities. Selection for all new engineering and design application and for repetitive use shall be made from this document.