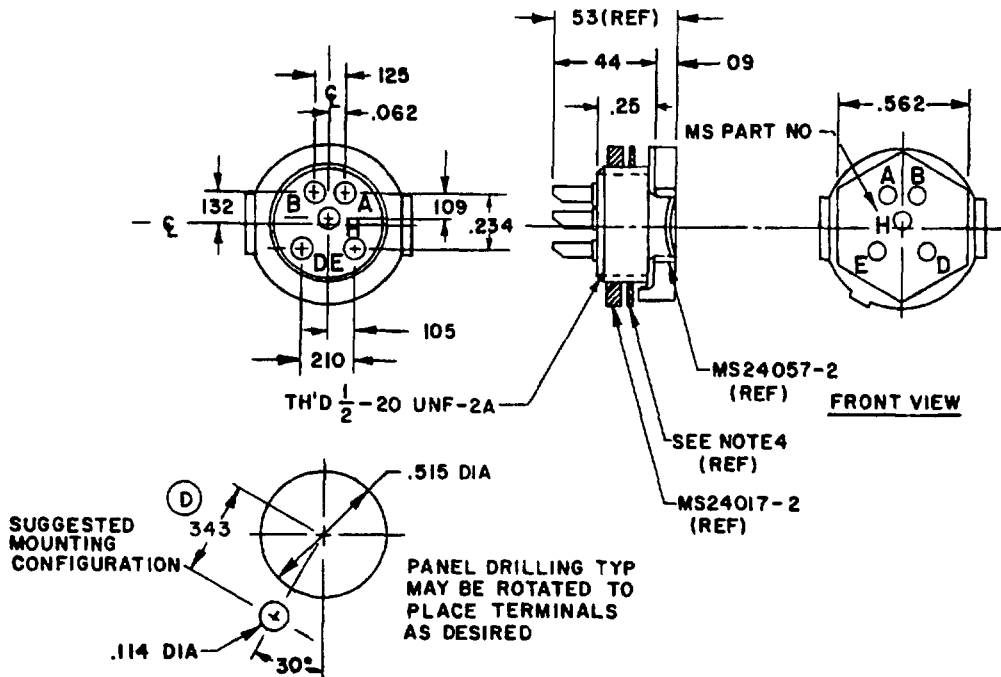


Reviewer/user information is current as of the date of this document. For future coordination of changes to this document, draft circulation should be based on the information in the current DODISS (FSC listing) AF + 11, 17, 85 (a) 14, 19 Army EL (a) MI (a) Navy SH (a) AS (a) + MC

This military standard has been approved by the Department of Defense and is mandatory for use by all Departments and Agencies of the Department of Defense. Selection for all new engineering and design applications and for repetitive use shall be made from this document.

FED SUP CLASS
5935



MS PART NUMBER	VOLTAGE RATING AT 60 CPS				TEMPERATURE RATING °C
	AT SEA LEVEL VOLTS		AT 70,000 FT. VOLTS		
	A-B	E-D	A-B	E-D	
MS24037-1	NOT APPROVED FOR USE				125
MS24037-2	425	800	100	175	150
MS24037-3	425	800	100	175	200

NOTES:

1. MATING CONNECTOR IS MS24038.
2. FORCE REQUIRED TO INSERT OR WITHDRAW MATING CONNECTOR IS 7 LBS MAX.
3. MAXIMUM TOLERANCE BETWEEN ANY TWO MOLDED CONTACT CENTERS IS $\pm .002$.
4. LOCKWASHER, INTERNAL TOOTH, PHOSPHOR BRONZE, SHAKEPROOF NO. 1924-02-00, OR EQUAL.
5. APPLICABLE HOODS PER MS24018.
6. ALL DIMENSIONS IN INCHES. UNLESS OTHERWISE SPECIFIED, TOLERANCES ARE $\pm .02$ OR $\pm .005$, AS APPLICABLE, ON DECIMALS AND $\pm 1/2^\circ$ ON ANGLES.
7. REFERENCED DOCUMENTS SHALL BE OF THE ISSUE IN EFFECT ON THE DATE OF INVITATION FOR BIDS.
8. THIS STANDARD TAKES PRECEDENCE OVER DOCUMENTS REFERENCED HEREIN.
9. WITHOUT NUT AND LOCKWASHER, CONNECTOR MAY BE USED AS A PLUG ON CABLE MS24120-2 IS ALSO NEEDED FOR THIS APPLICATION.
10. THE MS PART NUMBER MARKING REQUIRED ON THE ITEM MAY BE OMITTED BY MARKING THE PACKAGES OR TAGGING THE PARTS PER MIL-STD-130.

(Project 5935-1515)

P A SH Other Cust ARMY-EL AF-11	International Interest	TITLE CONNECTOR, PLUG-RECEPTACLE, ELECTRICAL, HEX, 5 CONTACTS, FEMALE, 7.5 AMPS	MILITARY STANDARD
			MS 24037
Procurement Specification MIL-C-8384		SUPERSEDES MS 24037 (USAF)	SHEET 1 OF 1

DD FORM 672 (Coordinated) PREVIOUS EDITIONS OF THIS FORM ARE OBSOLETE
10 APR 64

APPROVED 12 AUG 1954 REVISED (A) 4 JUN 1956 (B) 20 JUN 1963 (C) 3 APR 1964 (D) 21 FEB 1967