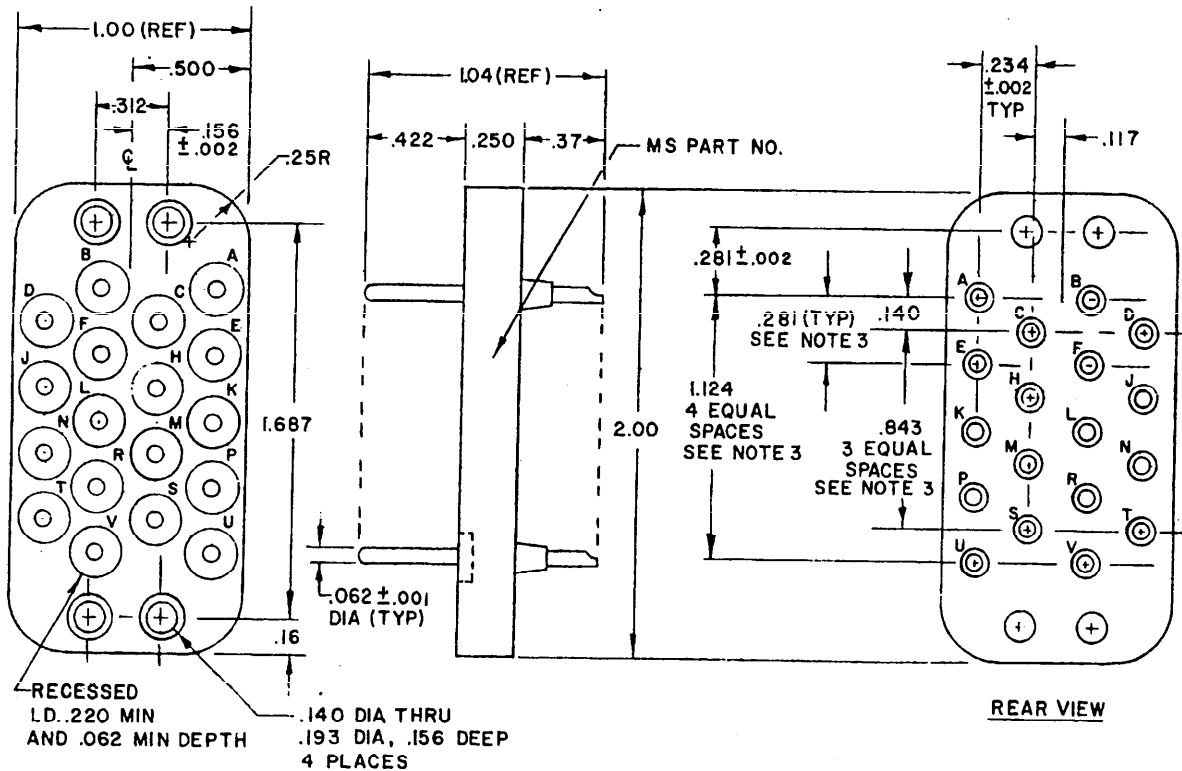


FED. SUP CLASS  
5935

Reviewer/user information is current as of the date of this document. For future coordination of changes to this document, draft circulation should be based on the information in the current DODISS (FSC listing).  
AF 11 17 85 II ARMY MU II EL II NAVY WP II SH @ MC @



MS PART NUMBER	VOLTAGE RATING AT 60 CPS				TEMPERATURE RATING °C
	AT SEA LEVEL VOLTS		AT 70,000 FT. VOLTS		
	between		between		
	contacts	contacts & ground	contacts	contacts & ground	
MS24034-1	Not approved for use				125
MS24034-2	1500	900	275	185	150
MS24034-3	1500	600	275	185	200

## NOTES:

- MATING CONNECTOR IS MS24033.
- FORCE REQUIRED TO INSERT OR WITHDRAW MATING CONNECTOR IS 24 LBS. MAX.
- MAXIMUM TOLERANCE BETWEEN ANY TWO MOLDED CONTACT CENTERS IS ± .002.
- APPLICABLE HOODS
  - TOP CABLE OPENING MS24131R1
  - SIDE CABLE OPENING MS24131S1
- ALL DIMENSIONS IN INCHES. UNLESS OTHERWISE SPECIFIED, TOLERANCES ARE ± .02 OR ± .005, AS APPLICABLE, ON DECIMALS AND ± 1/2° ON ANGLES.
- REFERENCED DOCUMENTS SHALL BE OF THE ISSUE IN EFFECT ON THE DATE OF INVITATION FOR BIDS.
- THIS STANDARD TAKES PRECEDENCE OVER DOCUMENTS REFERENCED HEREIN.
- AT THE OPTION OF THE MANUFACTURER, A LAND, BOSS, OR PAD OF 0.010 INCH MAXIMUM MAY BE ADDED TO THE MATING FACE OF THE MOLDING FOR PROTECTION OF RAISED LETTERS WHERE USED. (C) ENTIRE STANDARD REVISED

P.A. AF-11	TITLE	MILITARY STANDARD
Other Cust	CONNECTOR, PLUG-RECEPTACLE, ELECTRICAL, RECTANGULAR, 18 CONTACTS, MALE, 13 AMPS	MS24034
ARMY-EL		
NAVY-WEPS		
PROCUREMENT SPECIFICATION	SUPSEDES.	SHEET   OF
MIL-C-8384	MS 24034 USAF	

This military standard is approved by the Department of Defense and is mandatory on all activities. Selection for all new engineering and design application and for repetitive use shall be made from this document.

APPROVED 12 AUG 54 REVISED (A) 4 JUNE 56 (B) 20 JUNE 63 (C) 3 APR 1964