

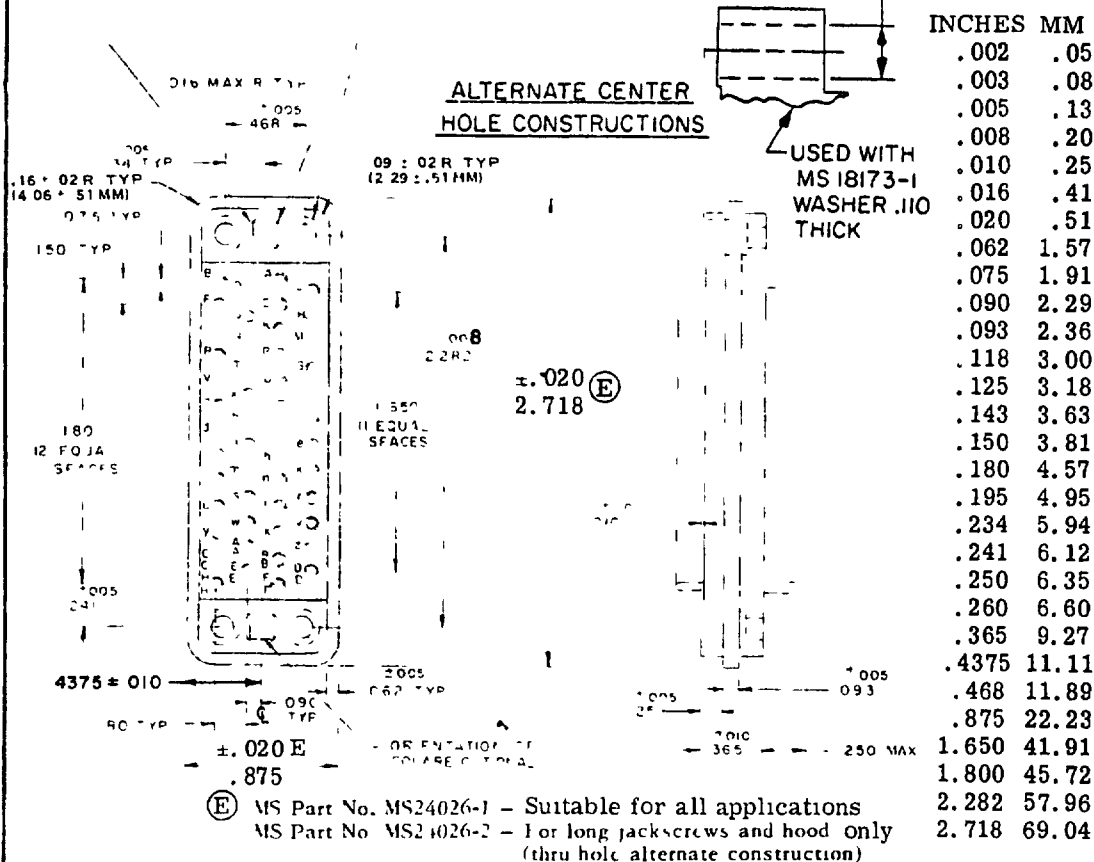
This military standard is mandatory for use by all Departments and Agencies of the Department of Defense. Selection for all new engineering and design applications and for repetitive use shall be made from this document.

Reviewer activities: Army MI, SH, AT, User activities: Army ME, AM, WC, Navy MC, US, Air Force 11

4 HOLES
 143 ± .005 SQUARE
 C BORE .195 ± .005, -.000
 DIA x .260 ± .010 DEEP

(E) 4 HOLES
 .118 ± .003 DIA THRU
 C BORE .195 ± .005, -.000
 DIA x .260 ± .010 DEEP

FED SUP CLASS
5835



DESIGN STANDARD FOR USE WITH MIL-C-28748/5.

NOTES

1. Dimensions are in inches.
2. Unless otherwise specified, tolerance is ± .015 (3.3 mm).
3. Metric equivalents (to the nearest .01 mm) are given for general information only and are based upon 1 inch = 25.4 mm.
4. Tolerance between any two adjacent contact centers is .010 (0.25 mm). Tolerance between any two contact centers, over tolerance, need not be greater than .015 (0.38 mm).
5. Contact identification may be located on either side of the contact hole and shall appear on the contact side of each contact.
6. For all other purposes, this standard takes precedence over procurement documents referenced herein.
7. Referenced documents shall be of the issue in effect on date of invitation for bid.
8. Complete connectors covered by issues of MS 2102, dated prior to 20 May 1970 are replaced by MS28748/5-H00G1A.

(E) denotes changes

P A Navy - EC	International interest	TITLE CONNECTOR, RECTANGULAR, ELECTRICAL, RACK AND PANEL, 50, SIZE 20 SOLDER PIN CONTACTS	MILITARY STANDARD
Other Cust AF-80 Army-EL			MS 24026
Procurement Specification MIL-C-28748	SUPERSEDES	MS 0024026(SHIPS)	Page 1 of 1

DD FORM 672 (Coordinated) PREVIOUS EDITIONS OF THIS FORM ARE OBSOLETE

5935-1822-90

APPROVED 12 Aug 1954 REVISED (D) 20 May 1970 (E) 23 June 1972