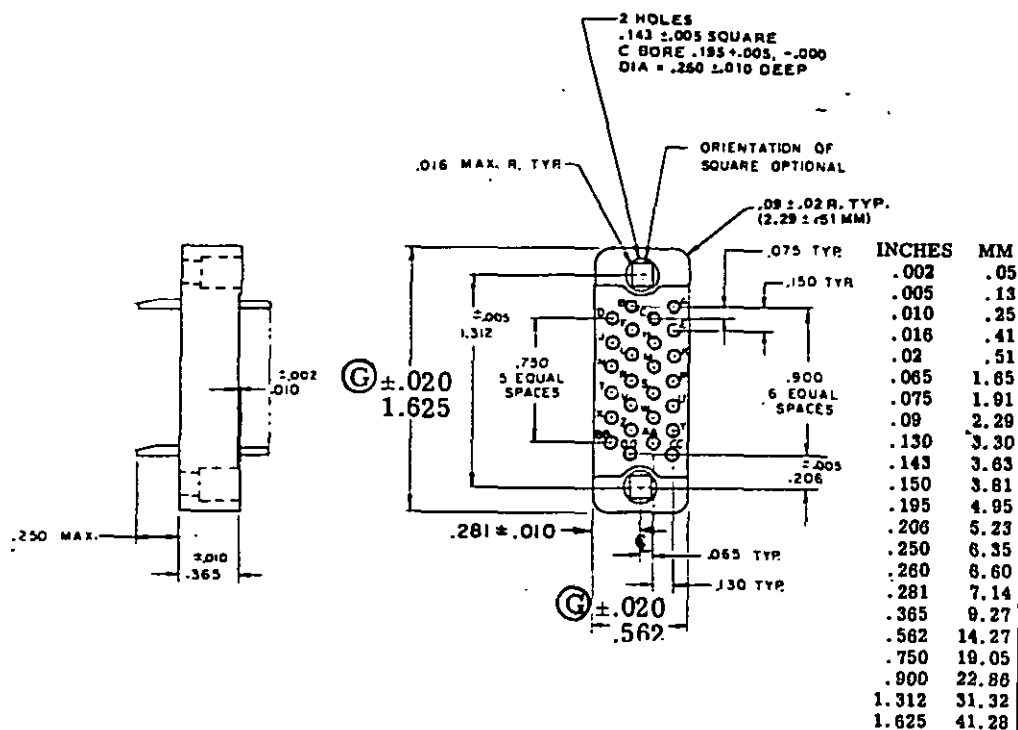


FED. SUP CLASS
5935User activities: Army ME, AM, WC
Navy MC, OS
Air ForceReviewer activities: Army MI, MU, AT
Navy AS, SH
Air Force 11

This military standard is mandatory for use by all Departments and Agencies of the Department of Defense. Selection for all new engineering and design applications and for repetitive use shall be made from this document.



MS Part No. MS24020-1

DESIGN STANDARD FOR USE WITH MIL-C-28748/5.

NOTES:

1. Dimensions are in inches.
2. Unless otherwise specified, tolerance is $\pm .015$ (.38 mm).
3. Metric equivalents (to the nearest .01 mm) are given for general information only and are based upon 1 inch = 25.4 mm.
4. Tolerance between any two adjacent contact centers shall be $\pm .004$ (.10 mm). Tolerance between any two contact centers, other than adjacent contacts, shall be $\pm .006$ (.15 mm).
5. Contact identification may be located on either side of the contact hole but shall appear on the front and rear of each insert.
6. For design feature purposes, this standard takes precedence over procurement documents referenced herein.
7. Referenced documents shall be of the issue in effect on date of invitation for bid.
8. Complete connectors covered by issues of MS24020 dated prior to 20 May 1970 are replaced by M28748/5-1:000:1A.

Ⓒ denotes changes

P.A. Navy - EC Other Cust AF-80 Army - EL	International Interest	TITLE CONNECTOR, RECTANGULAR, ELECTRICAL, RACK AND PANEL, 26, SIZE 20 SOLDER PIN CONTACTS	MILITARY STANDARD MS 24020
Procurement Specification MIL-C-28748		SUPERSEDES: MS 0024020(SHIPS)	Page 1 of 1

DD FORM 1 Sep 63 672 (Coordinated) PREVIOUS EDITIONS OF THIS FORM ARE OBSOLETE.

5935-1822-86

APPROVED 12 Aug 1954 REVISED (F) 20 May 1970 23 June 1972