

INCH-POUND

MS24018D

3 October 2002

SUPERSEDING

MS24018C

6 December 1971

DETAIL SPECIFICATION SHEET

HOOD-ELECTRICAL, CONNECTOR, MINIATURE

This specification is approved for use by all Departments
and Agencies of the Department of Defense.

The requirements for acquiring the product described herein
shall consist of this specification and MIL-DTL-28748.

MS24018 is inactive for new design and
is used for replacement purposes only.

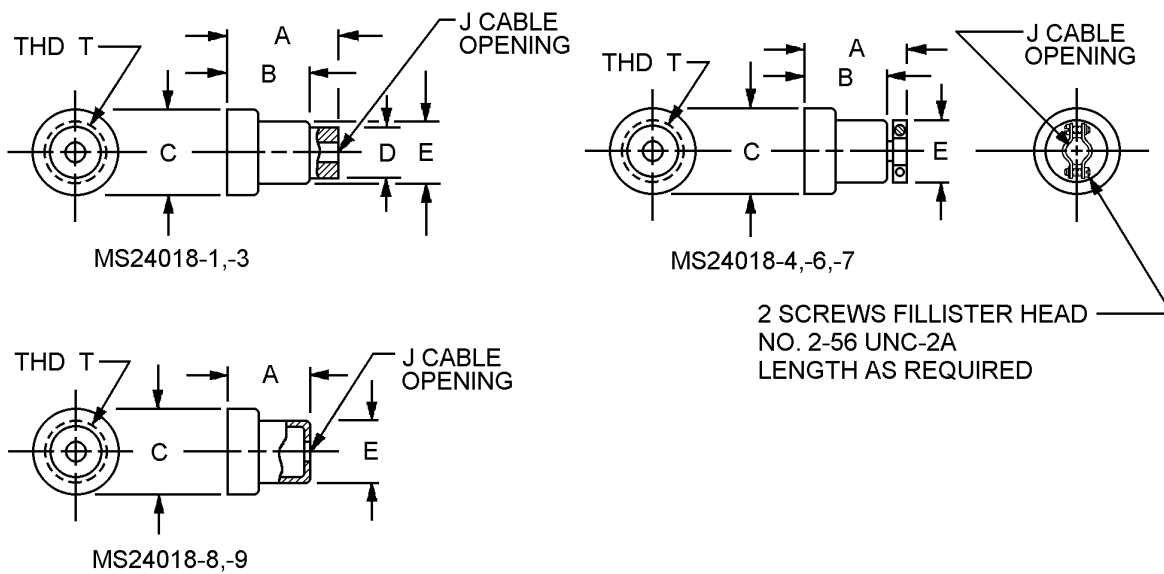


FIGURE 1. Hood dimensions and configuration.

MS24018D

MS Part or Identifying Number (PIN)	A (mm)	B (mm)	C dia (mm)	D dia (mm)	E dia (mm)	J dia (mm)	T thread
MS24018-1	.88 (22.35)	.66 (16.76)	.66 (16.76)	.27 (6.86)	.55 (13.97)	.14 (3.55)	½-20 UNF-2B
MS24018-3	.88 (22.35)	.66 (16.76)	.66 (16.76)	.42 (10.67)	.55 (13.97)	.30 (7.62)	½-20 UNF-2B
MS24018-4	1.00 ± .12 (25.4 ± 30.45)	.78 (19.81)	.69 ± .06 (17.53 ± .52)		.62 ± .12 (15.75 ± 30.45)	.14 (3.55)	½-20 UNF-2B
MS24018-6	1.00 ± .12 (25.4 ± 30.45)	.78 (19.81)	.69 ± .06 (17.53 ± .52)		.62 ± .12 (15.75 ± 30.45)	.30 (7.62)	½-20 UNF-2B
MS24018-7	.84 ± .12 (21.34 ± 30.45)	.66 (16.76)	.66 (16.76)		.55 (13.97)	.30 (7.62)	½-20 UNF-2B
MS24018-8	.66 (16.76)		.66 (16.76)		.55 (13.97)	.14 (3.55)	½-20 UNF-2B
MS24018-9	.66 (16.76)		.66 (16.76)		.55 (13.97)	.30 (7.62)	½-20 UNF-2B

Inches	mm	Inches	mm	Inches	mm
.001	0.03	.25	6.4	.781	19.84
.025	0.64	.38	9.7	.937	23.80
.031	0.79	.44	11.2	1.00	25.4
.06	1.5	.50	12.7	1.09	27.7
.12	3.0	.56	14.2	1.19	30.2
.19	4.8	.78	19.8	1.25	31.8

NOTES:

1. Dimensions are in inches.
2. Metric equivalents are given for general information only.
3. Unless otherwise specified tolerances shall be ±.02 inch (0.51 mm) for two place decimals.
4. The rear shell shall be made detachable for maintenance purposes.
5. Coupling ear to be free and independent of hood shell.

FIGURE 1. Hood dimensions and configuration - Continued.

MS24018D

REQUIREMENTS:

Dimensions and configuration: See figure 1.

Groups A and B inspections are required in lieu of qualification.

Hood (MS24018) is to be used in conjunction with MS24055, and MS24056.

Material:

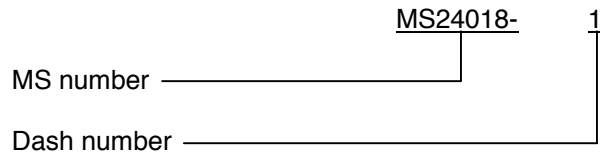
Hood: Mineral filled melamine in accordance with ASTM D5948, type MME.

Cable clamp and screws: Brass in accordance with ASTM B36, copper alloy UNS number C26000, half hard temper.

Finish:

Brass: Cadmium plate, in accordance with SAE-AMS-QQ-P-416, type II, class 3, plus olive drab chromate conversion.

Part or Identifying Number (PIN) example:



CONCLUDING MATERIAL

Custodians:

Army - CR
Navy - EC
Air Force - 11
DLA - CC

Preparing activity:

DLA - CC

(Project 5935-4559)

Review activities:

Army – AM, AR, AT, CR4, MI
Navy - AS, MC, OS, SH