

Army ME, AM, WC
Navy MC, SH
Air Force

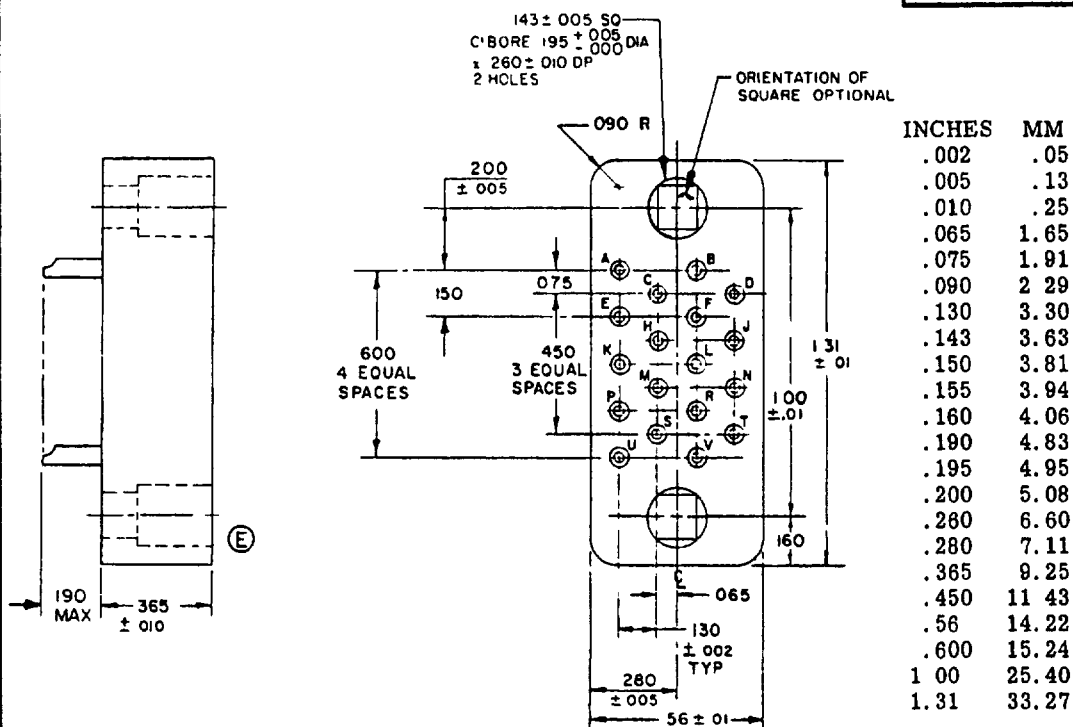
User activities

Army MI, MU, AT
Navy AS, OS
Air Force II

Reviewer activities

This military standard is mandatory for use by all Departments and Agencies of the Department of Defense. Selection for all new engineering and design applications and for repetitive use shall be made from this document.

FED SUP CLASS
5935



MS Part Number MS24011-1

E

INACTIVE FOR NEW DESIGN
AFTER 6 DECEMBER 1971

NOTES:

1. Dimensions are in inches
2. Unless otherwise specified, tolerance is ± 0.015 (.38 mm).
3. Metric equivalents (to the nearest .01 mm) are given for general information only and are based upon 1 inch = 25.4 mm
4. Tolerance between any two adjacent contact centers shall be ± 0.004 (.10 mm). Tolerance between any two contact centers, other than adjacent contacts, shall be ± 0.006 (.16 mm).
5. Contact identification may be located on either side of the contact hole but shall appear on the front and rear face of each insert.
6. For mating connector see connector, MS24012.
7. For design feature purposes, this standard takes precedence over procurement documents referenced herein.
8. Referenced documents shall be of the issue in effect on date of invitation for bid.
9. For shield for use with this connector, see MS24132.
10. Group A and B inspection is required in lieu of qualification

E

PA NAVY-EC Other Cust AF-89 ARMY-EL	International Interest	TITLE CONNECTOR, RECTANGULAR, ELECTRICAL, RACK AND PANEL, 18, SIZE 20 SOCKET CONTACTS	MILITARY STANDARD
			MS24011
Procurement Specification MIL-C-28748		SUPERSEDES	SHEET 1 OF 1

DD FORM 672
10 APR 64

(Coordinated) PREVIOUS EDITIONS OF THIS FORM ARE OBSOLETE

5935-1722-1

APPROVED 12 AUG 54
REVISED E 6 Dec 1971