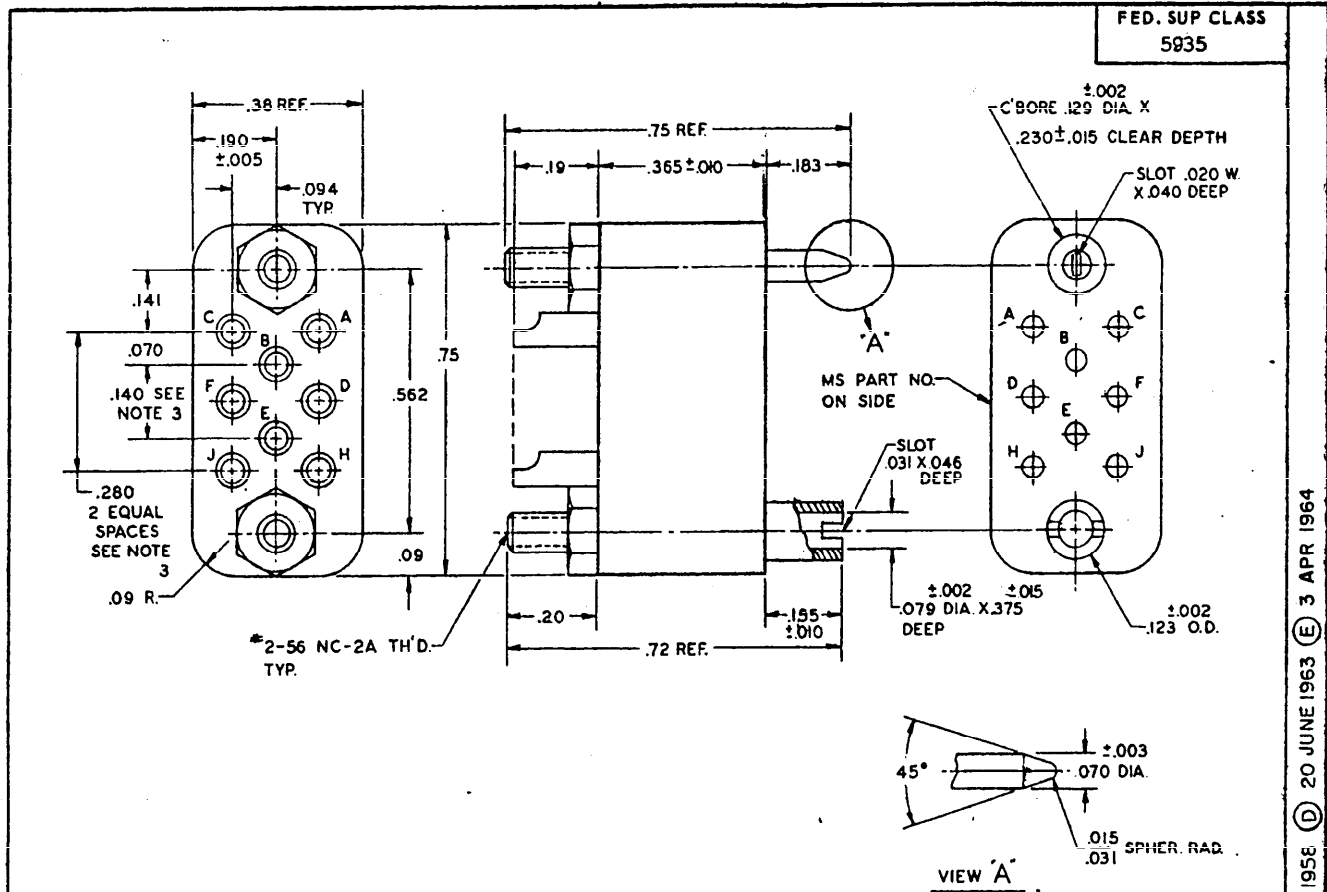


Reviewer/user information is current as of the date of this document. For future coordination of changes to this document, draft circulation should be based on the information in the current DODISS (FSC listing).
AF 11 17 85 II ARMY MU II EL II NAVY WP II SH (3 MC (3

military standard is approved by the Department of Defense and is for all activities. Selection for all new engineering and design and for repetitive use shall be made from this document.



MS PART NUMBER	VOLTAGE RATING AT 60 CPS		TEMPERATURE RATING °C
	AT SEA LEVEL VOLTS	AT 70,000 FT. VOLTS	
MS24005-1	Not approved for use		125
MS24005-2	500	125	150
MS24005-3	500	125	200

NOTES:

- MATING CONNECTOR IS MS24006.
- FORCE REQUIRED TO INSERT OR WITHDRAW THE MATING CONNECTOR IS 10 LBS. MAX.
- MAXIMUM TOLERANCE BETWEEN ANY TWO MOLDED CONTACT CENTERS IS $\pm .002$.
- APPLICABLE HOODS:
(A) TOP CABLE OPENING MS24132R2
(B) SIDE CABLE OPENING MS24132S2
- ALL DIMENSIONS IN INCHES. UNLESS OTHERWISE SPECIFIED, TOLERANCES ARE $\pm .02$ OR $\pm .005$, AS APPLICABLE, ON DECIMALS AND $\pm 1/2^\circ$ ON ANGLES.
- REFERENCED DOCUMENTS SHALL BE OF THE ISSUE IN EFFECT ON THE DATE OF INVITATION FOR BIDS.
- THIS STANDARD TAKES PRECEDENCE OVER DOCUMENTS REFERENCED HEREIN.
- AT THE OPTION OF THE MANUFACTURER, A LAND, BOSS, OR PAD OF 0.010 INCH MAXIMUM MAY BE ADDED TO THE MATING FACE OF THE MOLDING FOR PROTECTION OF RAISED LETTERS WHERE USED.

(E) ENTIRE STANDARD REVISED

P.A. AF-11 Other Cust ARMY - EL NAVY - WEPS	TITLE CONNECTOR, PLUG-RECEPTACLE, ELECTRICAL RECTANGULAR, 8 CONTACTS, FEMALE, 7.5 AMPS.	MILITARY STANDARD MS24005
PROCUREMENT SPECIFICATION	SUPSEDED:	SHEET OF

APPROVED 12 AUG. 1954 REVISED (A) 4 JUNE 1956 (B) 5 MAR 1957 (C) 5 DEC. 1958 (D) 20 JUNE 1963 (E) 3 APR 1964