

PROJ. NO. 6210-0488

FED. SUP CLASS  
6210

USER SYMBOLS:

REVIEWER SYMBOLS:

NAVY - AS  
USAF - 11, 85

\*Review/user information is current as of the date of this document.  
For future coordination of changes to this document, draft circulation  
should be based on the information in the current DODIG.

This military standard is approved for use by all Departments  
B. Agencies of the Department of Defense. Selection for all new  
engineering and design applications and for repetitive use shall  
be made from this document.

## PANEL ASSEMBLIES (a)

| PART NO.   | CLASS | DESCRIPTION                         |
|------------|-------|-------------------------------------|
| MS23007-1  | I     | PANEL ASSEMBLY - WITH OUTER CASE    |
| MS23007-11 | I     | PANEL ASSEMBLY - WITHOUT OUTER CASE |
| MS23007-2  | II    | PANEL ASSEMBLY - WITH OUTER CASE    |
| MS23007-22 | II    | PANEL ASSEMBLY - WITHOUT OUTER CASE |
| MS23007-3  | III   | PANEL ASSEMBLY - WITH OUTER CASE    |
| MS23007-33 | III   | PANEL ASSEMBLY - WITHOUT OUTER CASE |

(a) NOTE SHEET NOS. 2 AND 3

## REQUIREMENTS:

## 1. MATERIAL:

- A. CHASSIS BODY & OUTER CASE: STEEL, SHEET, QQ-S-699, .060 THICK.  
 B. TOP PANEL: STEEL, SHEET, QQ-S-699, .125 THICK.  
 C. CHASSIS FLANGE: STEEL, SHEET, QQ-S-699, .187 THICK.  
 D. COVERS, TOP PANEL: PLASTIC, TRANSPARENT, CONFORMING TO L-P-391, .125 THICK.  
 E. CARDS (FACSIMILE, CIRCUIT & SWITCH IDENTIFICATION): HEAVY GRAY DRAWING PAPER.

## 2. FINISH: SEE PROCUREMENT SPECIFICATION.

## 3. THREADS: IN ACCORDANCE WITH HANDBOOK 28.

- (A) 4. DIMENSIONS IN INCHES, UNLESS OTHERWISE SPECIFIED, TOLERANCES: DECIMALS  $\pm .015$ , ANGLES  $\pm 1^\circ$ .  
 INTERPRET DIMENSIONING AND TOLERANCING IN ACCORDANCE WITH USASI Y14.5-1966 (ANSI)

## 5. TAXIWAY SWITCHES: TWELVE (12), SPST, SHALL BE PROVIDED BUT NOT MOUNTED. SEE PROCUREMENT SPECIFICATION.

## 6. WIRE SIZES, LENGTH, ETC: SEE PROCUREMENT SPECIFICATION.

## 7. TERMINAL BOARDS AND WIRING INSTALLATION: SEE PROCUREMENT SPECIFICATION.

## 8. EXACT SHAPE OF SWITCH OPTIONAL, PROVIDED DIMENSIONS ARE NOT EXCEEDED, INTERCHANGEABILITY AND PERFORMANCE IS NOT AFFECTED AND THE DESIGN CHANGE IS APPROVED BY THE QUALIFYING ACTIVITY.

FOR DESIGN FEATURE PURPOSES, THIS STANDARD TAKES PRECEDENCE OVER PROCUREMENT DOCUMENTS REFERENCED HEREIN.  
 REFERENCED DOCUMENTS SHALL BE OF THE ISSUE IN EFFECT ON DATE OF INVITATIONS FOR BID.

(A) REVISED

|   |  |                   |
|---|--|-------------------|
| P.A.<br>NAVY - AS<br>Other Cust         | TITLE  | MILITARY STANDARD |
| USAF - 82                               | PANEL ASSEMBLY, WITH OUTER CASE, MILITARY STANDARD | MS23007           |
| PROCUREMENT SPECIFICATION<br>MIL-P-8944 | SUPERSEDES   | SHEET 1 OF 11     |

DD FORM 672-1 (Coordinated)  
1 MAR 72

PREVIOUS EDITIONS OF THIS FORM ARE OBSOLETE.

PLATE NO. 22061

APPROVED 15 APR 68 REVISED (A) 13 NOV 1975

USER SYMBOLS:

REVIEWER SYMBOLS:

NAVY - AS  
USAF - 11, 85

"Review/user information is current as of the date of this document. For future coordination of changes to this document, draft circulation should be based on the information in the current DD0155."

This military standard is approved for use by all Departments and Agencies of the Department of Defense. Selection for all new engineering and design applications and for repetitive use shall be made from this document.

|   |  |  |
|---|--|--|
| <p>MS25002-4 (MOD)<br/>MS91528-1A4B</p> <p>OUTER CASE<br/>(IF APPLICABLE<br/>SEE SHEET 9)</p> <p>CHASSIS<br/>(SEE SHEET 6)</p> <p>CIRCUIT IDENTIFICATION<br/>CARD (UNDER<br/>PLASTIC COVER)</p> <p>MS24510-15<br/>2 REQD</p> <p>MS24509-5<br/>(8 REQD)</p> <p>SCREW<br/>NO. 10-32 UNF-3A<br/>X .375 LG (8 REQD)</p> <p>SCREW<br/>NO. 4-40 UNC-3A<br/>X .250 LG (12 REQD)<br/>(DRILL AND TAP AT<br/>ASSY)</p> <p>MS25002-1 (MOD)<br/>MS91528-1A4B</p> <p>SWITCH IDENTIFICATION CARD<br/>(UNDER PLASTIC COVER)</p> <p>PLACE DESIGNATION "W IND LTS,<br/>OBST LTS &amp; BCN"<br/>ON CARD AT THIS<br/>SWITCH.</p> <p>12 PUSH-PULL SWITCHES TO<br/>BE SUPPLIED FOR INSTALLATION<br/>ON FACSIMILIE (SEE SHEET 11)</p> <p>SEE INSTRUCTION<br/>CARD AND/OR T.O.</p> <p>3.750*</p> <p>13.750*</p> <p>19.000 (REF)</p> <p>ASSEMBLY -1 (WITH OUTER CASE)</p> <p>ASSEMBLY -11 (W/O OUTER CASE)</p> <p>VIEW B<br/>(SHEET 3)</p> <p>FACSIMILE<br/>CARD (UNDER<br/>PLASTIC<br/>COVER)</p> <p>4.000*</p> <p>9.500*</p> <p>16.000<br/>(REF)</p>  |  | <p>FED. SUP CLASS<br/>6210</p>   |
| <p>MS25002-4 (MOD)<br/>MS91528-1A4B</p> <p>OUTER CASE<br/>(IF APPLICABLE<br/>SEE SHEET 9)</p> <p>CHASSIS<br/>(SEE SHEET 6)</p> <p>CIRCUIT IDENTIFICATION<br/>CARD (UNDER PLASTIC<br/>COVER)</p> <p>MS24510-15<br/>2 REQD</p> <p>MS24509-5<br/>(16 REQD)</p> <p>SCREW<br/>NO. 10-32 UNF-3A<br/>X .375 LG (8 REQ'D)</p> <p>SCREW<br/>NO. 4-40 UNC-3A<br/>X .250 LG (12 REQD)<br/>(DRILL AND TAP AT ASSY)</p> <p>*DIMENSION FOR<br/>PLASTIC PANEL COVERS</p> <p>MS25002-1 (MOD)<br/>MS91528-1A4B</p> <p>SWITCH IDENTIFICATION CARD<br/>(UNDER PLASTIC COVER)</p> <p>PLACE DESIGNATION "W IND LTS,<br/>OBST LTS &amp; BCN"<br/>ON CARD AT THIS<br/>SWITCH.</p> <p>12 PUSH-PULL SWITCHES TO BE<br/>SUPPLIED FOR INSTALLATION<br/>ON FACSIMILIE (SEE SHEET 11)</p> <p>SEE INSTRUCTION<br/>CARD AND/OR T.O.</p> <p>3.750*</p> <p>13.750*</p> <p>19.000 (REF)</p> <p>ASSEMBLY -2 (WITH OUTER CASE)</p> <p>ASSEMBLY -22 (W/O OUTER CASE)</p> <p>VIEW B<br/>(SHEET 3)</p> <p>FACSIMILE<br/>CARD (UNDER<br/>PLASTIC<br/>COVER)</p> <p>4.000*</p> <p>9.500*</p> <p>16.000<br/>(REF)</p> |  | <p>APPROVED 15 APR 68</p> <p>REVISED (A) FOR CHANGES SEE SHEETS 1 T-HRU 11</p> |

|  |  |   |
|--|--|---|
| <p>P.A.<br/>NAVY - AS<br/>Other Cust</p> <p>USAF- 82</p> | <p>TITLE</p> <p>PANEL ASSEMBLIES, AIRPORT LIGHTING CONTROL</p> | <p>MILITARY STANDARD</p> <p>MS23007</p> |
| <p>PROCUREMENT SPECIFICATION<br/>MIL-P-8944</p>          | <p>SUPERSEDES:</p>   | <p>SHEET 2 OF 11</p>                    |

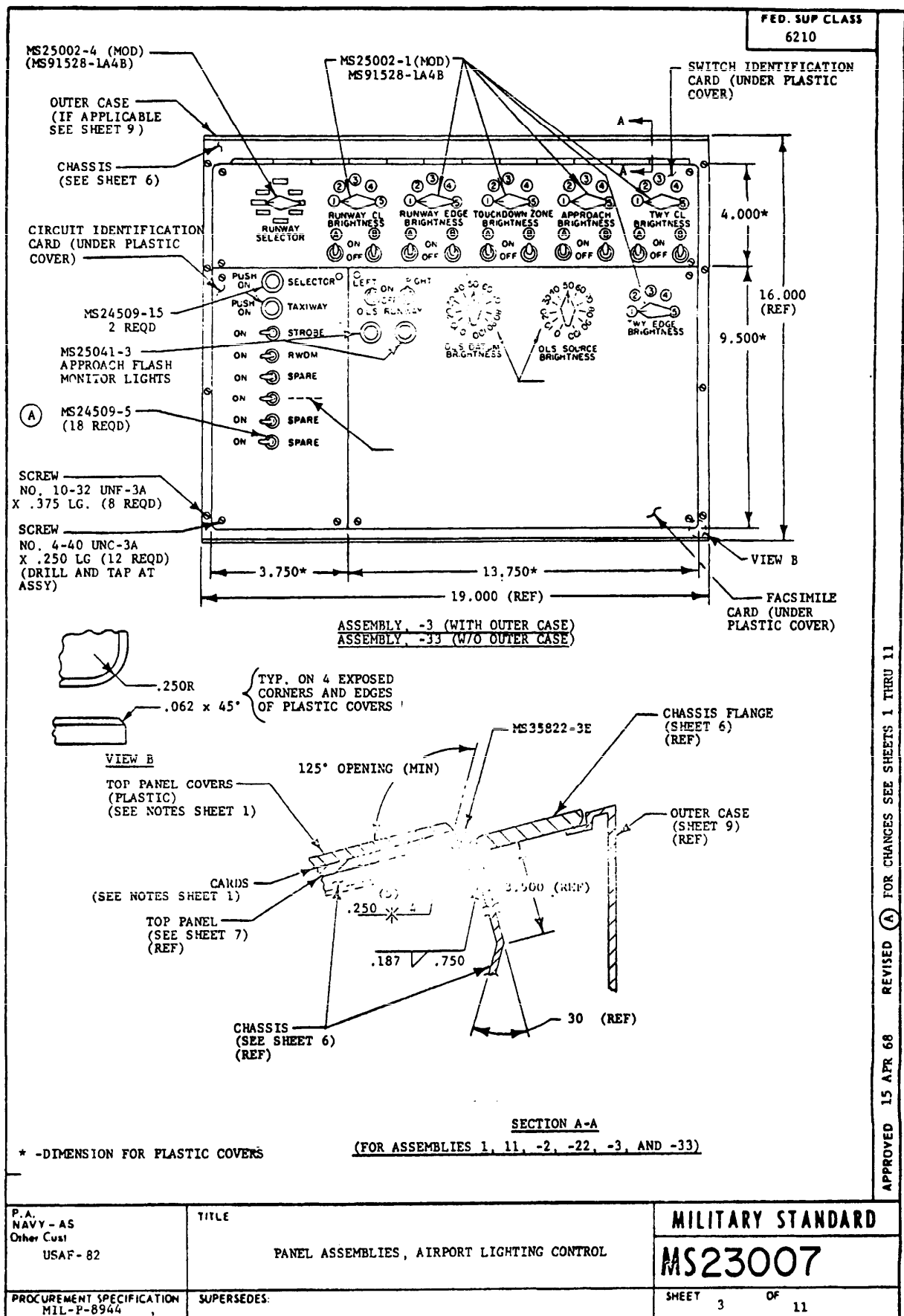
USER SYMBOLS:

REVIEWER SYMBOLS:

NAVY - AS  
USAF - 11, 85

"Review/user information is current as of the date of this document.  
For future coordination of changes to this document, draft circulation  
should be based on the information in the current DODISS."

This military standard is approved for use by all Departments  
of the Department of Defense. Selection for all new  
engineering and design applications and for repetitive use shall  
be made from this document.



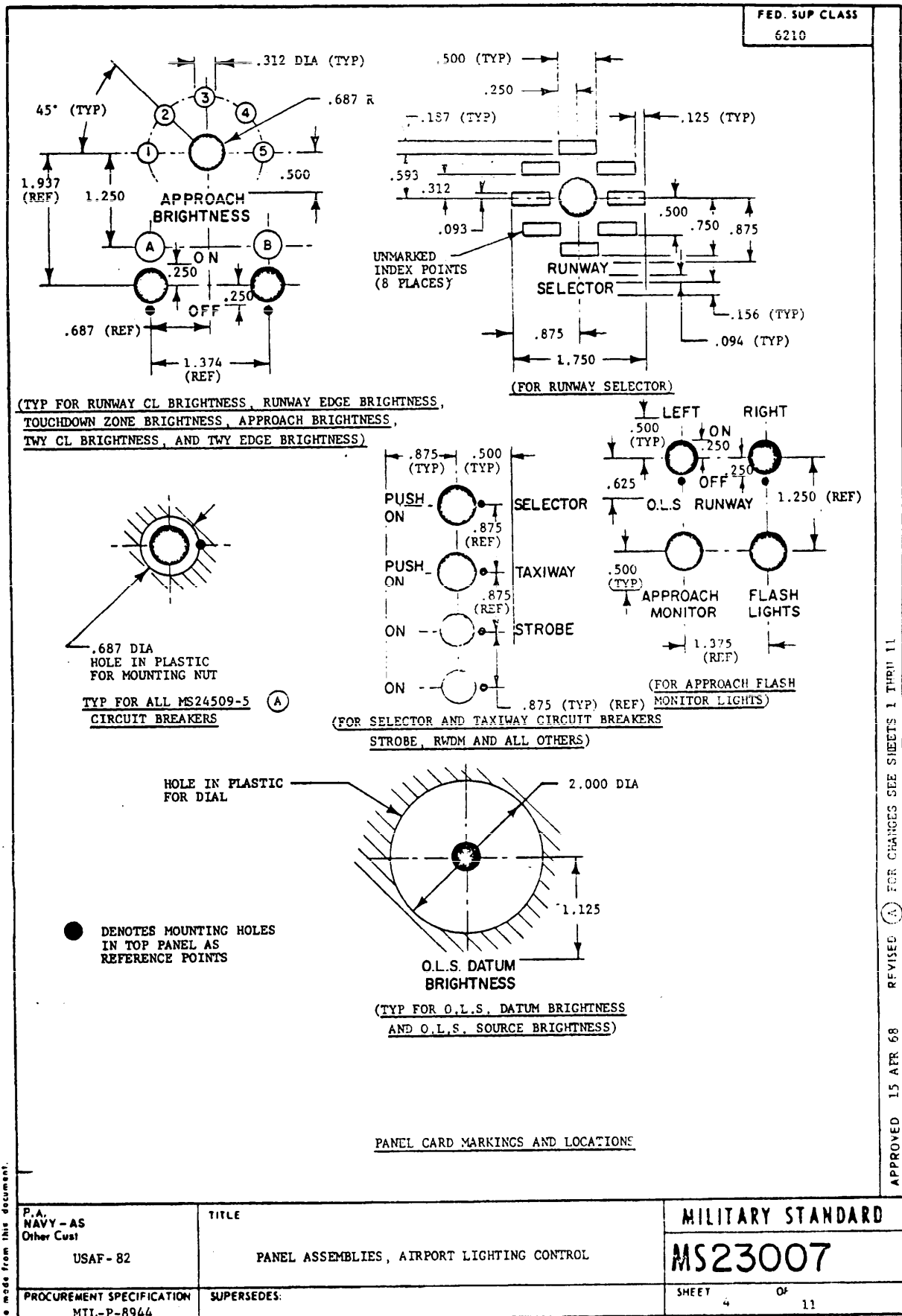
USER SYMBOLS:

REVIEWER SYMBOLS:

NAVY - AS  
USAF - 11, 85

"Review/user information is current as of the date of this document.  
For future coordination of changes to this document, draft circulation  
should be based on the information in the current DODISS."

This military standard is approved for use by all Departments  
in Agencies of the Department of Defense. Selection for all new  
engineering and design applications and for repetitive use shall  
be made from this document.



REVIEWER SYMBOLS:

NAVY - AS

USAF - 11. 85

"Review/user information is current as of the date of this document.  
For future coordination of changes to this document, draft circulation  
should be based on the information in the current DD155."

This military standard is approved for use by all Departments  
of the Department of Defense. Selection for all new  
engineering and design applications for repetitive use shall  
be made from this document.

P.A.  
NAVY - AS  
Other Cust  
USAF - 82

PROCUREMENT SPECIFICATION  
MIL-P-8944

TITLE

PANEL ASSEMBLIES, AIRPORT LIGHTING CONTROL

SUPERSEDES:

MILITARY STANDARD

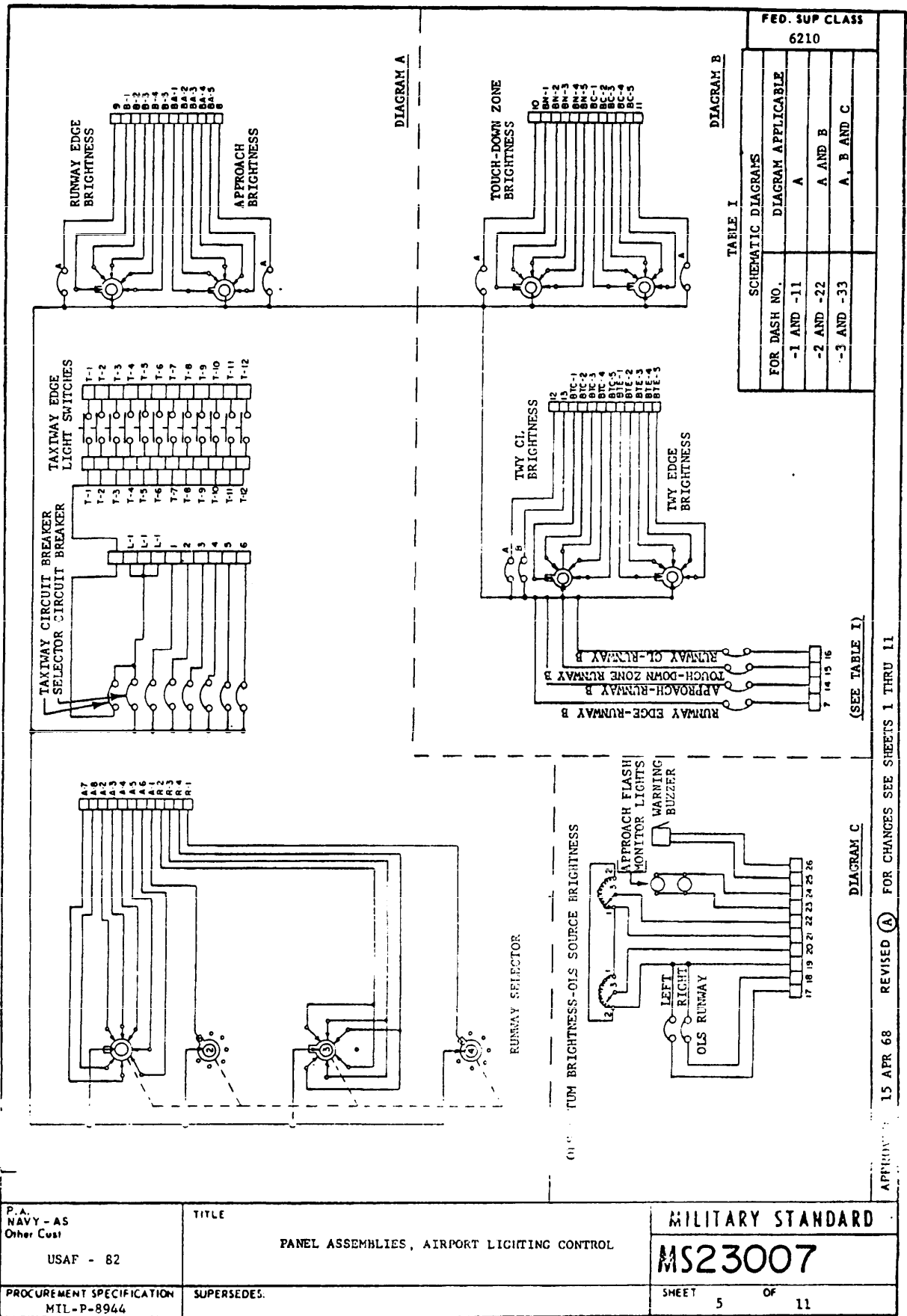
MS23007

SHEET 5 OF 11

DD FORM 672-1 (Coordinated)

PREVIOUS EDITIONS OF THIS FORM ARE OBSOLETE.

PLATE NO. 23009



APPROVED: 15 APR 68 REVISED (A) FOR CHANGES SEE SHEETS 1 THRU 11

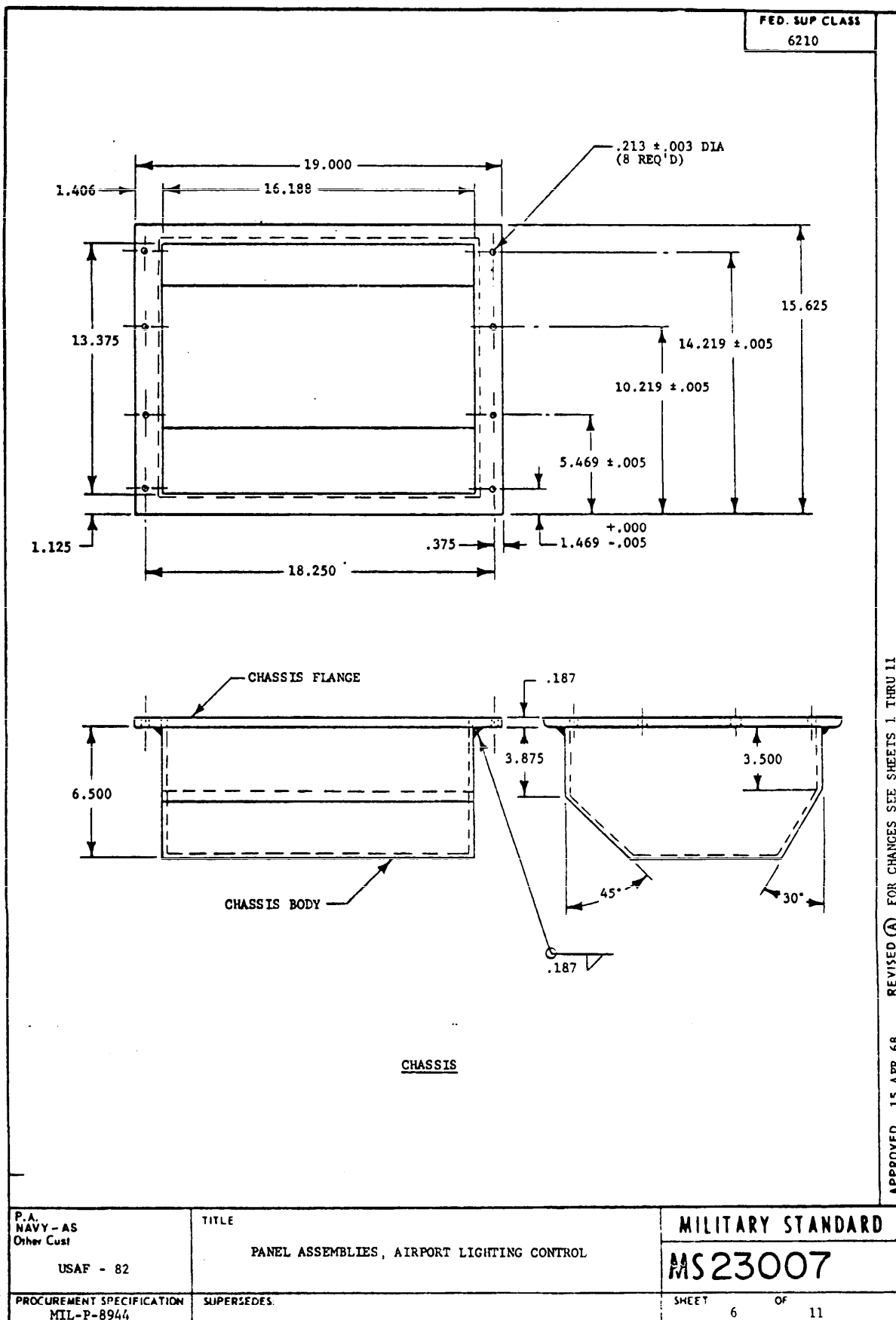
USER SYMBOLS:

REVIEWER SYMBOLS:

NAVY - AS  
USAF - 11, 85

"Review/user information is current as of the date of this document.  
For future coordination of changes to this document, draft circulation  
should be based on the information in the current DODISS."

This military standard is approved for use by all Departments  
& Agencies of the Department of Defense. Selection for all new  
engineering and design applications and for repetitive use shall  
be made from this document.



APPROVED 15 APR 68 REVISED (A) FOR CHANGES SEE SHEETS 1 THRU 11

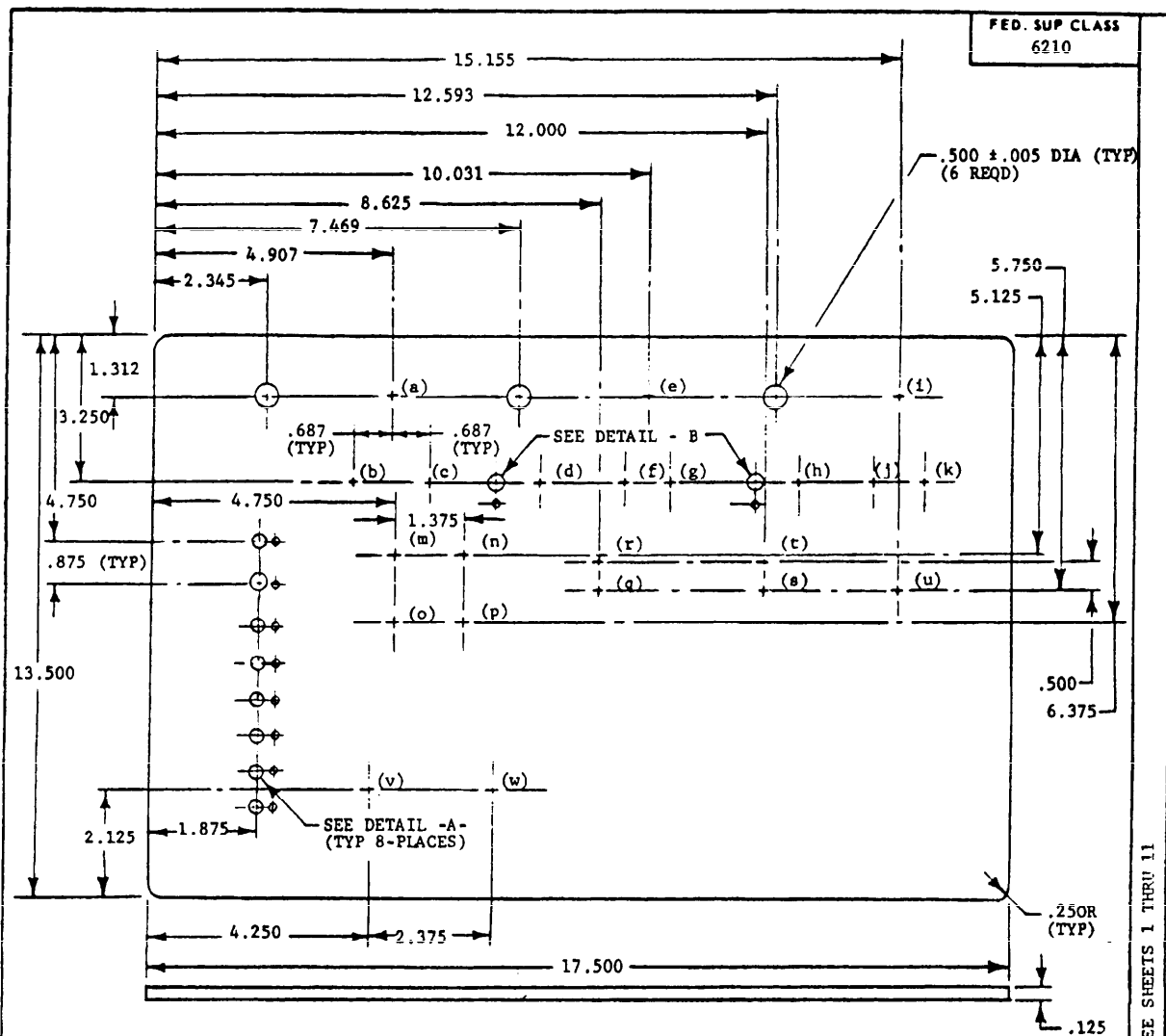
USER SYMBOLS:

REVIEWER SYMBOLS:

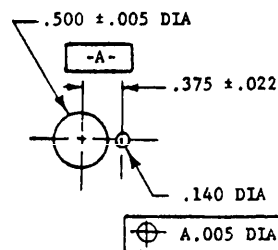
NAVY - AS  
USAF - 11, 85

\*Review/user information is current as of the date of this document.  
Per future coordination of changes to this document, draft circulation  
should be based on the information in the current DD135.

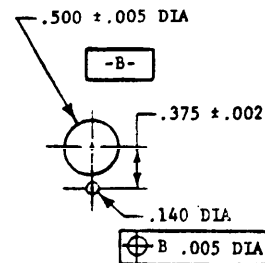
This military standard is approved for use by all Departments  
& Agencies of the Department of Defense. Selection for all new  
engineering and design applications and for repetitive use shall  
be made from this document.



TOP PANEL (SEE TABLE II)



DETAIL - A-



DETAIL - B-

NOTE: REMOVE BURRS AND BREAK SHARP EDGES .015 MAX

|  |   |                                     |
|--|---|-------------------------------------|
| P.A.<br>NAVY - AS<br>Other Cust<br><br>USAF - 82 | TITLE<br><br>PANEL ASSEMBLIES, AIRPORT LIGHTING CONTROL | MILITARY STANDARD<br><b>MS23007</b> |
| PROCUREMENT SPECIFICATION:<br>MIL-P-8944         | SUPERSEDES.   | SHEET 7 OF 11                       |



USER SYMBOLS:

REVIEWER SYMBOLS:  
NAVY - AS  
USAF - 11, 85

"Review/user information is current as of the date of this document.  
Per future coordination of changes to this document, draft circulation  
should be based on the information in the current DD155."

This military standard is approved for use by all Departments  
& Agencies of the Department of Defense. Selection for all new  
engineering and design applications and for repetitive use shall  
be made from this document.

FED. SUP CLASS  
6210

| TABLE II |                          |                         |                         |                   |
|----------|--------------------------|-------------------------|-------------------------|-------------------|
| HOLE     | HOLE DIAMETER $\pm .005$ |                         |                         |                   |
|          | MS23007-1<br>MS23007-11  | MS23007-2<br>MS23007-22 | MS23007-3<br>MS23007-33 | SEE<br>DETAIL - B |
| a        | .047                     | .500                    | .500                    |                   |
| b        | .047                     | .500                    | .500                    | *                 |
| c        | .047                     | .500                    | .500                    | *                 |
| d        | .047                     | .500                    | .500                    | *                 |
| e        | .047                     | .500                    | .500                    |                   |
| f        | .047                     | .500                    | .500                    | *                 |
| g        | .047                     | .500                    | .500                    | *                 |
| h        | .047                     | .500                    | .500                    | *                 |
| i        | .047                     | .500                    | .500                    |                   |
| j        | .047                     | .500                    | .500                    | *                 |
| k        | .047                     | .500                    | .500                    | *                 |
| m        | .047                     | .047                    | .500                    | *                 |
| n        | .047                     | .047                    | .500                    | *                 |
| o        | .047                     | .047                    | .500                    |                   |
| p        | .047                     | .047                    | .500                    |                   |
| q        | .047                     | .047                    | .386                    |                   |
| r        | .047                     | .047                    | .185                    |                   |
| s        | .047                     | .047                    | .385                    |                   |
| t        | .047                     | .047                    | .185                    |                   |
| u        | .047                     | .500                    | .500                    |                   |
| v        | .047                     | .047                    | .144                    | ⊗                 |
| w        | .047                     | .047                    | .144                    | ⊗                 |
|          |                          |                         |                         |                   |

⊗ - COUNTERSINK FOR NO. 6 FLAT HEAD SCREW

APPROVED 15 APR 68 REVISED (A) FOR CHANGES SEE SHEETS 1 THRU 11

|  |   |                                  |
|--|---|----------------------------------|
| P.A.<br>NAVY - AS<br>Other Cust                          | TITLE<br><br>PANEL ASSEMBLIES, AIRPORT LIGHTING CONTROL | MILITARY STANDARD<br><br>MS23007 |
| USAF - 82<br><br>PROCUREMENT SPECIFICATION<br>MIL-P-8944 | SUPERSEDES:   | SHEET 8 OF 11                    |

DD FORM 672-1 (Coordinated)  
1 MAR 72

PREVIOUS EDITIONS OF THIS FORM ARE OBSOLETE.

PLATE NO. 73085



USER SYMBOLS:

REVIEWER SYMBOLS:

NAVY - AS  
USAF - 11, 85

"Review/user information is current as of the date of this document. For future coordination of changes to this document, draft circulation should be based on the information in the current DODISS."

This military standard is approved for use by all Departments & Agencies of the Department of Defense. Selection for all new engineering and design applications and for repetitive use shall be made from this document.

|   |  |                        |
|---|--|------------------------|
|   |  | FED. SUP CLASS<br>6210 |
|   |  |                        |
| <p>OUTER CASE</p>                       |  |                        |
| P.A.<br>NAVY - AS<br>Other Cust         | TITLE                                      | MILITARY STANDARD      |
| USAF - 82                               | PANEL ASSEMBLIES, AIRPORT LIGHTING CONTROL | MS23007                |
| PROCUREMENT SPECIFICATION<br>MIL-P-8944 | SUPERSEDES:                                | SHEET 9 OF 11          |

APPROVED 15 APR 68 REVISED (A) FOR CHANGES SEE SHEETS 1 THRU 11

USER SYMBOLS:

REVIEWER SYMBOLS:  
NAVY - AS  
USAF - 11, 85

"Review/user information is current as of the date of this document. For future coordination of changes to this document, draft circulation should be based on the information in the current DD135."

This military standard is approved for use by all Departments & Agencies of the Department of Defense. Selection for all new engineering and design applications and for repetitive use shall be made from this document.

| FED. SUP CLASS<br>6210   |  |                            |                                  |       |     |        |                     |            |                       |            |  |       |  |       |                     |  |                       |  |       |        |       |             |            |             |            |    |     |       |     |       |     |      |      |     |   |
|--|--|----------------------------|----------------------------------|-------|-----|--------|---------------------|------------|-----------------------|------------|--|-------|--|-------|---------------------|--|-----------------------|--|-------|--------|-------|-------------|------------|-------------|------------|----|-----|-------|-----|-------|-----|------|------|-----|---|
| <p style="text-align: center;">.375-32 UNEF-2B<br/>HEX NUT AND<br/>LOCK WASHER</p> <p style="text-align: center;">2.000 DIA<br/>2.812 DIA<br/>.312</p>   | <p style="text-align: center;">STOP<br/>STOP ARM<br/>.125 MAX<br/>MOUNTING<br/>THICKNESS<br/>2.062</p> |                            |                                  |       |     |        |                     |            |                       |            |  |       |  |       |                     |  |                       |  |       |        |       |             |            |             |            |    |     |       |     |       |     |      |      |     |   |
| <p style="text-align: center;">.500 .343<br/>LOCK RING<br/>.250 DIA<br/>.500<br/>.375-32 UNEF-2A<br/>.175 DIA X .062<br/>POSITIONING LUG</p>   | <p style="text-align: center;">(REAR VIEW)</p>   |                            |                                  |       |     |        |                     |            |                       |            |  |       |  |       |                     |  |                       |  |       |        |       |             |            |             |            |    |     |       |     |       |     |      |      |     |   |
| <p style="text-align: center;">VIEW B-B<br/>(UNMOUNTED)</p> <p style="text-align: center;">1 2 3</p> <p style="text-align: center;">(WIRING AND CONNECTION DIAGRAM)</p>  |  |                            |                                  |       |     |        |                     |            |                       |            |  |       |  |       |                     |  |                       |  |       |        |       |             |            |             |            |    |     |       |     |       |     |      |      |     |   |
| <p>TABLE III</p> <table border="1" style="width: 100%; border-collapse: collapse;"> <thead> <tr> <th rowspan="3">KNOB<br/>ROTATION<br/>(322°)</th> <th colspan="3" rowspan="2">INPUT</th> <th colspan="6">OUTPUT</th> </tr> <tr> <th colspan="2" rowspan="2">VOLTS</th> <th rowspan="2">TERMS</th> <th colspan="2">CONSTANT<br/>CURRENT</th> <th colspan="2">CONSTANT<br/>IMPEDANCE</th> </tr> <tr> <th>VOLTS</th> <th>CYCLES</th> <th>TERMS</th> <th>MAX<br/>AMPS</th> <th>MAX<br/>KVA</th> <th>MAX<br/>AMPS</th> <th>MAX<br/>KVA</th> </tr> </thead> <tbody> <tr> <td>CW</td> <td>120</td> <td>50/60</td> <td>1-2</td> <td>0-120</td> <td>1-3</td> <td>2.25</td> <td>0.27</td> <td>3.0</td> <td>0</td> </tr> </tbody> </table> <p style="text-align: center;">VARIABLE TRANSFORMER (SEE TABLE III)</p> |  | KNOB<br>ROTATION<br>(322°) | INPUT                            |       |     | OUTPUT |                     |            |                       |            |  | VOLTS |  | TERMS | CONSTANT<br>CURRENT |  | CONSTANT<br>IMPEDANCE |  | VOLTS | CYCLES | TERMS | MAX<br>AMPS | MAX<br>KVA | MAX<br>AMPS | MAX<br>KVA | CW | 120 | 50/60 | 1-2 | 0-120 | 1-3 | 2.25 | 0.27 | 3.0 | 0 |
| KNOB<br>ROTATION<br>(322°)   | INPUT  |                            |                                  |       |     | OUTPUT |                     |            |                       |            |  |       |  |       |                     |  |                       |  |       |        |       |             |            |             |            |    |     |       |     |       |     |      |      |     |   |
|  |  |                            |                                  | VOLTS |     | TERMS  | CONSTANT<br>CURRENT |            | CONSTANT<br>IMPEDANCE |            |  |       |  |       |                     |  |                       |  |       |        |       |             |            |             |            |    |     |       |     |       |     |      |      |     |   |
|  | VOLTS  | CYCLES                     | TERMS                            |       |     |        | MAX<br>AMPS         | MAX<br>KVA | MAX<br>AMPS           | MAX<br>KVA |  |       |  |       |                     |  |                       |  |       |        |       |             |            |             |            |    |     |       |     |       |     |      |      |     |   |
| CW   | 120  | 50/60                      | 1-2                              | 0-120 | 1-3 | 2.25   | 0.27                | 3.0        | 0                     |            |  |       |  |       |                     |  |                       |  |       |        |       |             |            |             |            |    |     |       |     |       |     |      |      |     |   |
| P.A.<br>NAVY - AS<br>Other Cust<br><br>USAF - 82   | TITLE<br><br>PANEL ASSEMBLIES, AIRPORT LIGHTING CONTROL  |                            | MILITARY STANDARD<br><br>MS23007 |       |     |        |                     |            |                       |            |  |       |  |       |                     |  |                       |  |       |        |       |             |            |             |            |    |     |       |     |       |     |      |      |     |   |
| PROCUREMENT SPECIFICATION<br>MIL-P-8944  | SUPERSEDES:  |                            | SHEET 10 OF 11                   |       |     |        |                     |            |                       |            |  |       |  |       |                     |  |                       |  |       |        |       |             |            |             |            |    |     |       |     |       |     |      |      |     |   |

APPROVED 15 APR 68 REVISED (A) FOR CHANGES SEE SHEETS 1 THRU 11

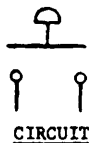
USER SYMBOLS:

REVIEWER SYMBOLS:

NAVY - AS  
USAF - 11, 85

"Review/user information is current as of the date of this document.  
Per future coordination of changes in this document, draft circulation  
should be based on the information in the current ODIS."

This military standard is approved for use by all Departments  
of the Department of Defense. Selection for all new  
engineering and design applications and for repetitive use shall  
be made from this document.



|  |
|--|
| CURRENT CAPACITY<br>125 VOLTS, 60 CYCLES |
| INDUCTIVE                                |
| 3A 80% P.F.                              |

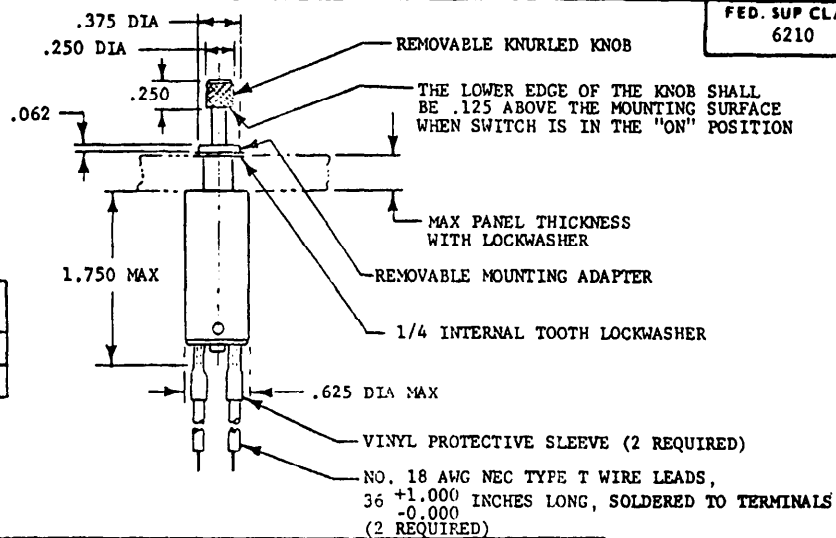


TABLE IV - PUSH-PULL SWITCH (SEE NOTE 8)

| SWITCH DATA                                  |                       |
|--|-----------------------|
| TYPE   | SPST PUSH-PULL        |
| ACTUATING FORCE                              | 1 ± 1/2 LB            |
| TOTAL TRAVEL                                 | 1/4 MIN               |
| MINIMUM OPERATING CYCLES                     | 10,000 AT 3A, 125V AC |
| WEIGHT                                       | .04 LB MAX            |
| STRENGTH OF PUSH BUTTON AND PUSH BUTTON STOP | 15 LBS                |
| STRENGTH OF TERMINALS                        | 5 LBS                 |
| CONTACT GAP                                  | DOUBLE .020           |
| AMBIENT TEMPERATURE RANGE                    | -20°C TO 55°C         |

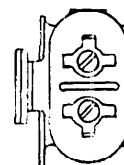
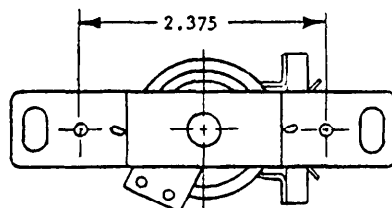


TABLE V - WARNING BUZZER (W/O LEADS) (EDWARDS 1054 FLASH BUZZER OR EQUAL)

| OPERATING CHARACTERISTICS |     |      |            |                | MOUNTING  | MIN DEPTH IN INCHES<br>OF OUTLET BOX AND/<br>OR PLASTIC COVER | FINISH PLATE   | APPROX<br>WEIGHT<br>LBS |
|---------------------------|-----|------|------------|----------------|---|---|--|-------------------------|
| VOLTS<br>AC               | V-A | AMPS | DC<br>OHMS | FINISH         |   |   |  |                         |
| 120                       | 6.0 | .05  | 1400       | ZINC<br>PLATED | MOUNTS ON ANY STANDARD<br>SINGLE GANG BOX OR<br>SINGLE GANG OPENING | 1-3/8   | STD GANG PLATE WITH<br>SINGLE TOGGLE OPENING<br>(NOT SUPPLIED) | 1/4                     |

TABLE VI - WIRING AND MODIFICATION FOR MS25002 SWITCH

| PART<br>NO.           | WAFER<br>NO. | ELECTRICAL CONNECTIONS WITH KNOB POINTER AT POSITION |       |       |       |       |       |       |       |  |
|-----------------------|--------------|--|-------|-------|-------|-------|-------|-------|-------|--|
|                       |              | 1  | 2     | 3     | 4     | 5     | 6     | 7     | 8     |  |
| MS25002-1             | 1            | -  | -     | 11-13 | 11-14 | 11-15 | 11-16 | 11-17 | -     | 5 POSITION - NO OFF                        |
| MS25002-4<br>MODIFIED | 1            | -  | 11-12 | 11-13 | 11-14 | 11-15 | 11-16 | 11-17 | 11-18 | 8 POSITION - NO OFF<br>CONTINUOUS ROTATION |
|                       | 2            | 21-22  | -     | -     | -     | -     | -     | -     | -     |  |
|                       | 3            | -  | 31-32 | 31-33 | 31-34 | 31-35 | 31-36 | 31-37 | 31-38 |  |
|                       | 4            | 41-42  | -     | -     | -     | -     | -     | -     | -     |  |

|   |  |                   |
|---|--|-------------------|
| P.A.<br>NAVY - AS<br>Other Cust         | TITLE                                      | MILITARY STANDARD |
| USAF - 82                               | PANEL ASSEMBLIES, AIRPORT LIGHTING CONTROL | MS23007           |
| PROCUREMENT SPECIFICATION<br>MIL-P-8944 | SUPSEDES.                                  | SHEET 11 OF 11    |

