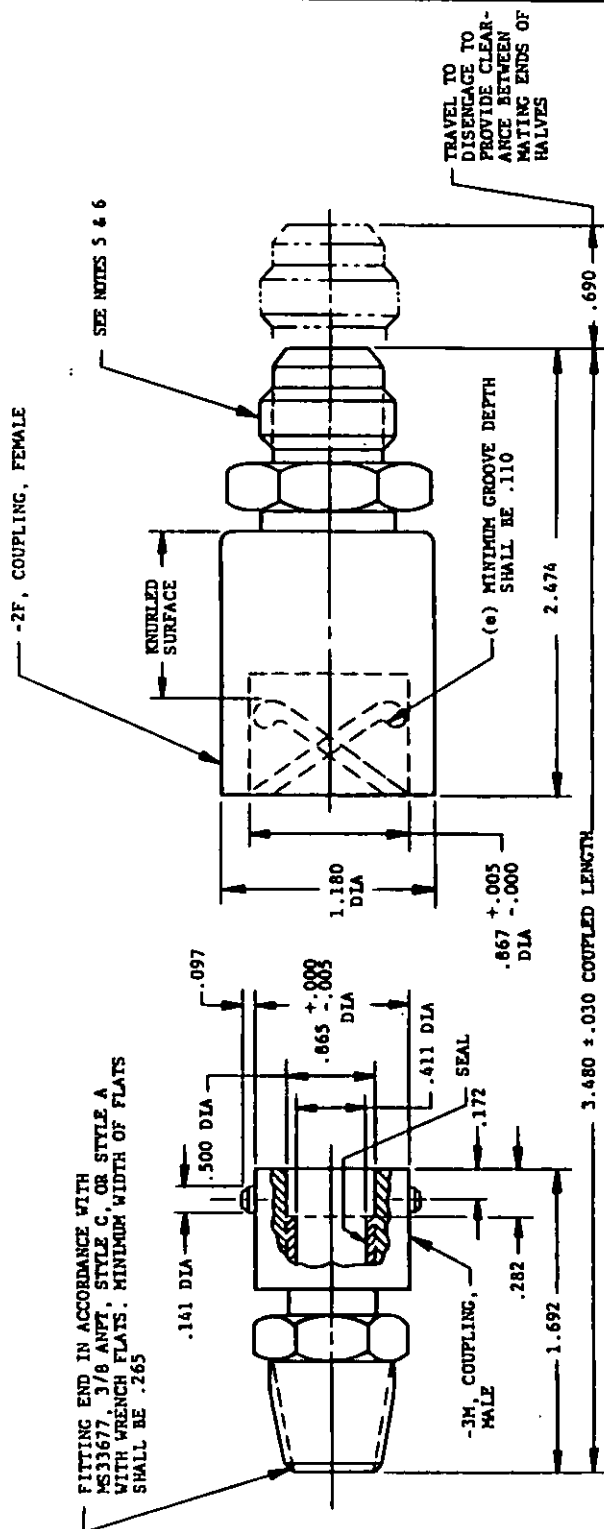


IF DOLLAR SLOT FOR  
PUN IS LOCATED HERE,  
PUN. SHALL BE  
.160 + .005

THE REQUIREMENTS FOR ACQUIRING THE PRODUCT(S) DESCRIBED HEREIN SHALL CONSIST OF THIS SPECIFICATION SHEET AND THE ISSUE OF THE FOLLOWING SPECIFICATION LISTED IN THAT ISSUE OF THE DODIES SPECIFIED IN THE SOLICITATION: MIL-C-21049

THIS SPECIFICATION IS APPROVED FOR USE BY ALL DEPARTMENTS AND AGENCIES OF THE DEPARTMENT OF DEFENSE.



PREPARING ACTIVITY: NAVY - AS

CUSTODIANS: ARMY -

NAVY -

AIR FORCE - 99

DLA -

REVIEW: USAF-11,71

USER:

PROJECT NUMBER: 1660-0614

DISTRIBUTION STATEMENT

A. APPROVED FOR PUBLIC RELEASE; DISTRIBUTION IS UNLIMITED.

# MILITARY SPECIFICATION SHEET

TITLE

COUPLING ASSEMBLIES, QUICK DISCONNECT,  
AIRCRAFT LIQUID OXYGEN SYSTEMS

SPECIFICATION SHEET NUMBER

**MS22068**

31 DEC 90  
REV E

SUPERSEDED  
**MS22068D**

18 OCT 85

AMSC - N/A

FSC 1660

PAGE 2 OF 3

FORM APPROVED  
OMB NO. 0704-0188

DASH NO.	ASSY TYPE	CONSISTS OF		WT OZ MAX
		COUPLING MALE	COUPLING FEMALE	
-1	1A	-1M	-1F	6.5
-2	1B	-2M	-1F	7.0
-3	11	-3M	-2F	8.0

DASH NO.	COUPLING HALF		WT OZ MAX
	MALE	FEMALE	
-4	1M	----	2.5
-5	2M	----	3.0
-6	3M	----	2.75
-7	---	1F	4.0
-8	---	2F	5.25

- (a) TYPE 1A AND 1B SUPPLY ASSEMBLY WITH CHECK VALVE.
- (b) TYPE 11 VENT COUPLING ASSEMBLY WITHOUT CHECK VALVE.
- (c) THE LOCK SLEEVE SHALL INCORPORATE A POSITIVE MECHANICAL MEANS TO PREVENT THE SLEEVE FROM ROTATING.
- (d) ENGAGEMENT PIN GROOVES OF -1F COUPLING HALF MAY HAVE ANY CONFIGURATION THAT WILL MATE WITH -1M OR -2M COUPLING HALF THAT HAS BEEN APPROVED FOR LISTING ON THE QPL.
- (e) ENGAGEMENT PIN GROOVES OF -2F COUPLING HALF MAY HAVE ANY CONFIGURATION THAT WILL MATE WITH -3M COUPLING HALF THAT HAS BEEN APPROVED FOR LISTING ON THE QPL.

**NOTES:**

1. MATERIAL: SEE PROCUREMENT SPECIFICATION.
2. FINISH: MINIMUM SURFACE TEXTURE 125 MICROINCHES IN ACCORDANCE WITH ANSI B46.1.
3. DIMENSIONS IN INCHES. UNLESS OTHERWISE SPECIFIED, TOLERANCES:  
DECIMALS  $\pm .010$ , ANGLES  $\pm 0.5^\circ$ .
4. FITTING END SHALL BE IN ACCORDANCE WITH MS33656-5, STYLE E, OR STYLE G WITH WRENCH FLATS, MINIMUM WIDTH OF WRENCH FLATS SHALL BE .100.
5. FITTING END SHALL BE IN ACCORDANCE WITH MS33656-8, STYLE E, OR STYLE G WITH WRENCH FLATS, MINIMUM WIDTH OF WRENCH FLATS SHALL BE .296.
6. PORT HOLE DIAMETER SHALL BE OPTIONAL TO MEET PERFORMANCE REQUIREMENTS.
7. IN THE EVENT OF A CONFLICT BETWEEN THE TEXT OF THIS STANDARD AND THE REFERENCES CITED HEREIN, THE TEXT OF THIS STANDARD SHALL TAKE PRECEDENCE.
8. REFERENCED GOVERNMENT (OR NON-GOVERNMENT) DOCUMENTS OF THE ISSUE LISTED IN THAT ISSUE OF THE DEPARTMENT OF DEFENSE INDEX OF SPECIFICATIONS AND STANDARDS (DODISS) SPECIFIED IN THE SOLICITATION FORM A PART OF THIS STANDARD TO THE EXTENT SPECIFIED HEREIN.

PREPARING ACTIVITY: NAVY - AS  
CUSTODIAN: ARMY - NAVY -  
AIR FORCE - 99 OLA -  
REVIEW: USAF-11. 71  
USER:  
PROJECT NUMBER: 1660-0616

**MILITARY SPECIFICATION SHEET**

## TITLE

COUPLING ASSEMBLIES, QUICK DISCONNECT,  
AIRCRAFT LIQUID OXYGEN SYSTEMS

SPECIFICATION SHEET NUMBER

**MS22068** 31 DEC 90  
REV ESUPERSEDING  
MS22068D

18 OCT 85

AMSC - N/A

FBC 1660

## DISTRIBUTION STATEMENT

A. APPROVED FOR PUBLIC RELEASE; DISTRIBUTION IS UNLIMITED.

PAGE 3 OF 3