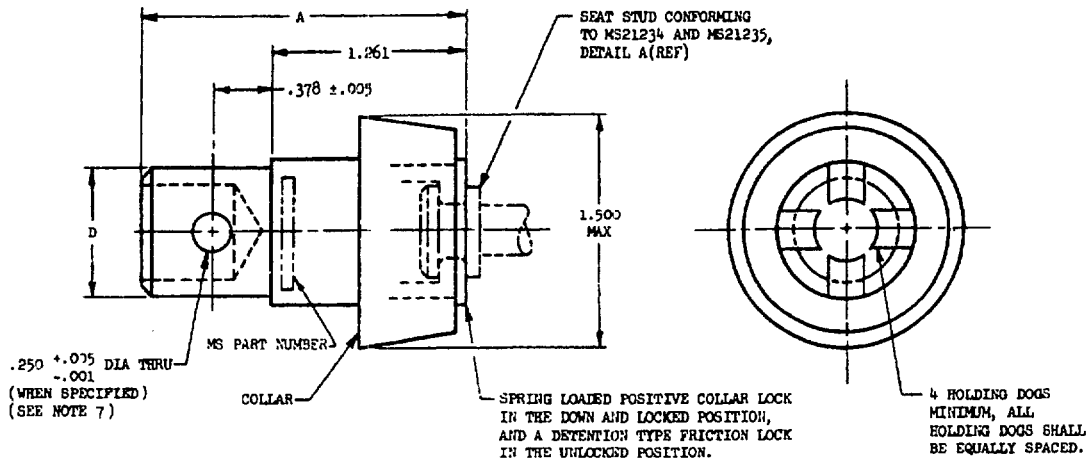


NOTICE - REVIEW/USER INFORMATION IS CURRENT AS OF DATE OF THIS DOCUMENT. FOR FUTURE COORDINATION OF CHANGES TO THIS DOCUMENT, DRAFT CIRCULATION SHOULD BE BASED ON THE INFORMATION IN THE CURRENT FEDERAL SUPPLY CLASSIFICATION LISTING OF DD STANDARDIZATION DOCUMENTS.

OTHER INTEREST:  
REVIEW USER  
ARMY-MO NAVY-CG  
NAVY-UP  
AF-11,82

This military standard is approved by the Department of Defense and is mandatory for use by all Departments & Agencies of the Department of Defense. Selection for all new engineering and design applications and for repetitive use shall be made from this document.



DASH NO.	A HEIGHT	D DIA	WEIGHT MAX LB
-1	2.156	.855/.850	.25
-2		.885/.882	
-3		.867/.864	
-4	2.325 ±.015	.752/.748	
-5		.893/.890	
-6		.917/.914	

#### NOTES:

1. MATERIAL: SEE PROCUREMENT SPECIFICATION.
2. FINISH: SEE PROCUREMENT SPECIFICATION.
3. REMOVE ALL BURRS AND SHARP EDGES.
4. CONTOUR OPTIONAL PROVIDED DIMENSIONS INDICATED ARE NOT EXCEEDED.
5. WHEN THE ADAPTER IS INSTALLED ON THE FLOOR STUD, THE DIAMETRAL CLEARANCE SHALL BE NOT GREATER THAN .040.
6. DIMENSIONS IN INCHES. UNLESS OTHERWISE SPECIFIED, TOLERANCES: DECIMALS ±.010.
7. WHEN A MOUNTING HOLE IS REQUIRED, THE CENTERLINE OF THE HOLE SHALL COINCIDE WITH THE PROJECTED CENTER LINES OF ANY TWO OPPOSITE HOLDING DOGS.
8. PART NUMBERS: ADD B AFTER DASH NO. FOR QUICK DISCONNECT ADAPTER WITHOUT MOUNTING HOLE.
9. EXAMPLES OF PART NUMBERS: MS22034-1 QUICK DISCONNECT ADAPTER .855/.850 DIA X 2.156 HIGH WITH MOUNTING HOLE.  
MS22034-1B QUICK DISCONNECT ADAPTER .855/.850 DIA X 2.156 HIGH WITHOUT MOUNTING HOLE.

FOR DESIGN FEATURE PURPOSES, THIS STANDARD TAKES PRECEDENCE OVER PROCUREMENT DOCUMENTS REFERENCED HEREIN. REFERENCED DOCUMENTS SHALL BE OF THE ISSUE IN EFFECT ON DATE OF INVITATIONS FOR BID.

① ENTIRE STANDARD REVISED

P.A. NAVY-WP	TITLE	MILITARY STANDARD
Other Cust USAF-11 ARMY-MO	ADAPTER, QUICK DISCONNECT, PASSENGER SEAT TO FLOOR	MS22034
PROCUREMENT SPECIFICATION MIL-A-21165	SUPERSEDES:	SHEET 1 OF 1

DD FORM 672-1 (Coordinated)

PREVIOUS EDITIONS OF THIS FORM ARE OBSOLETE.

PLATE NO. 1532C

APPROVED 25 NOV 57 REVISED 27 AUGUST 65

W 28