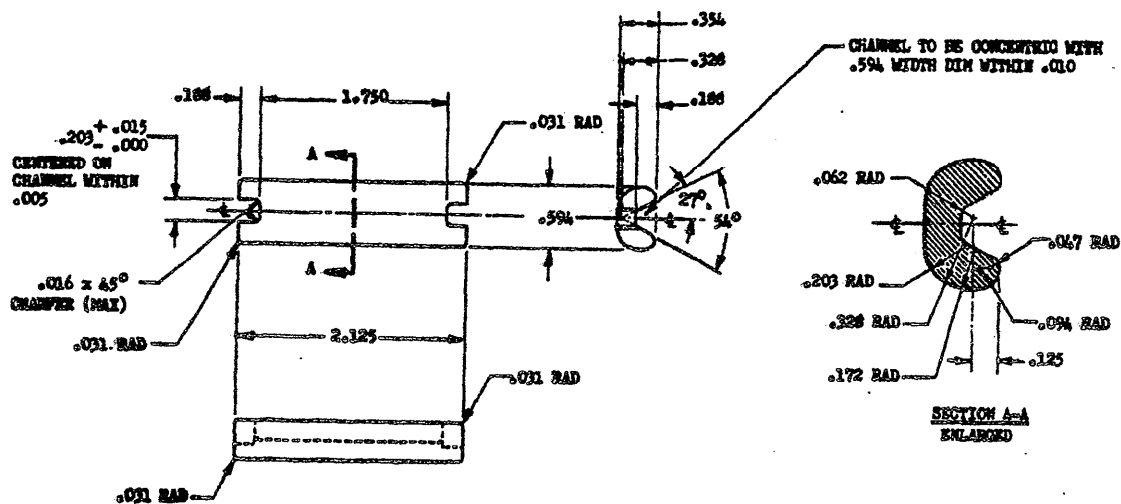


NOTES: When Government drawings, specifications, or other data are used for any purpose other than in connection with a definitely related Government procurement operation, the United States Government thereby incurs no responsibility, nor any obligation whatsoever; and the fact that the Government may have furnished, furnished, or in any way supplied the said drawings, specifications, or other data is not to be regarded by implication or otherwise as in any way constituting an endorsement, approval, or warranty by the Government of the quality, value, or use, or of any patented invention that may in any way be related thereto.



| | |
|-------------|------|
| NE PART NO. | PIIN |
| MS22022-1 | |

REMARKS: STEEL, SPECIFICATION MIL-S-5626 OR MIL-S-6049.

METHOD OF POURING: HOT POUR

THIS PART IS USED IN THE MANUFACTURE OF PARACHUTE QUICK FIT EJECTOR SNAP M22201A-1 AND REVERSIBLE QUICK FIT ADAPTER M22201A-1, AND SHALL NOT BE FURNISHED TO SERVICE ACTIVITIES AS A SEPARATE ITEM.

UNLESS OTHERWISE SPECIFIED, GREASE ALL JOINTS, OIL MAX.

DIMENSIONS IN INCHES. UNLESS OTHERWISE SPECIFIED, TOLERANCES: DECIMALS $\pm .015$, ANGLES $\pm 2^\circ$.

THIS STANDARD TAKES PRECEDENCE OVER DOCUMENTS REFERENCED HEREIN.

REFERENCED DOCUMENTS SHALL BE OF THE ISSUE IN EFFECT ON DATE OF INVITATIONS FOR BID.

THIS STANDARD HAS BEEN PROMULGATED BY THE DEPARTMENT OF DEFENSE AS THE MILITARY STANDARD TO LIGHT THE SELECTION OF THE ITEM, PRODUCT, OR DESIGN COVERED HEREIN IN ENGINEERING, DESIGN, AND PROCUREMENT. THIS STANDARD SHALL BECOME EFFECTIVE SIX MONTHS AFTER THE DATE OF APPROVAL HEREIN.

| | | | |
|---|--|--------------------------|-------------------------|
| CUSTODIANS Navy - Baker Shawcross | OTHER INT. A - N - AF - | MILITARY STANDARD | MS22022 (Aer) |
| | SLATE BAR, PARACHUTE HARNESSES CHUCK FITT BOWLING SHAP | | |
| DOCUMENT SPECIFICATION MIL-8-7192 | SUPERSEDES: | SHEET 1 OF 2 | |