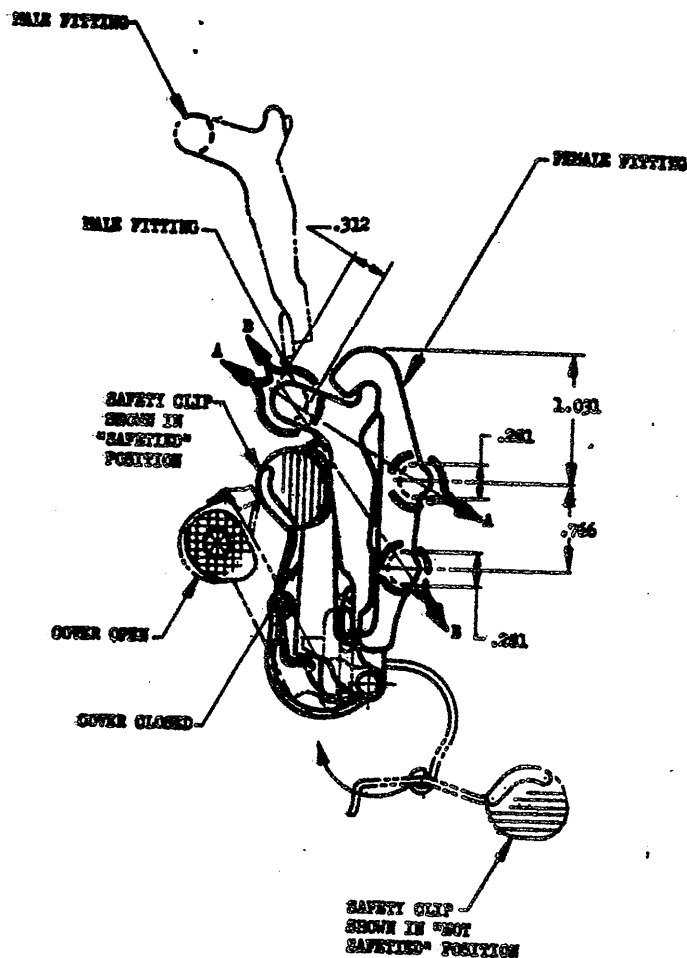
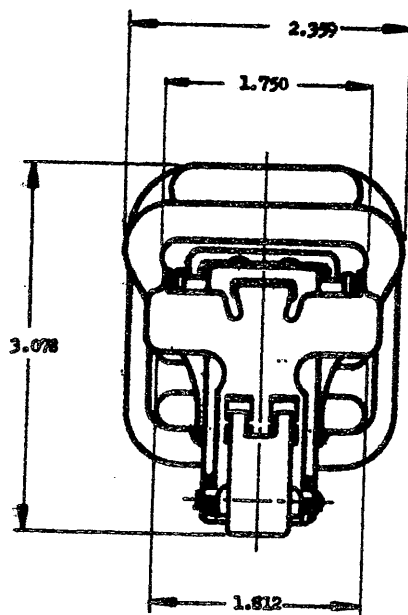


NOTES: When Government drawings, specifications, or other data are used for any purpose other than in connection with a definitely related Government procurement operation, the United States Government thereby incurs no responsibility, nor any obligation whatever; and the fact that the Government may have formulated, furnished, or in any way supplied the said drawings, specifications, or other data is not to be regarded by implication or otherwise as in any manner licensing the holder or any other person, or conveying any rights or permission to manufacture, use, or sell any patented invention that may in any way be related thereto.



MS ASSY PART NO.
MS22008-1

ASSEMBLY MS22008-1 SHALL BE PROOF LOADED IN ACCORDANCE WITH THE REQUIREMENTS OF THE PROCUREMENT SPECIFICATION AT 5,000 LB (STATIC) AS INDICATED BY ARROWS A-A AND B-B. TWO SEPARATE PROOF LOADS.

WITH LOAD OF 300 LB APPLIED AS INDICATED FOR PROOF LOAD, A MAXIMUM PULL OF 15 LB ON COVER MUST RELEASE MALE FITTING.

PULL REQUIRED TO REMOVE SAFETY CLIP SHALL APPROXIMATE 6 LB.

MOVING SAFETY CLIP FROM "NOT SAFETIED" POSITION TO "SAFETIED POSITION" MUST CLOSE AND LOCK COVER IN PLACE.

DIMENSIONS IN INCHES. DIMENSIONS SHOWN ARE FOR REFERENCE ONLY.

FOR MANUFACTURING INFORMATION SEE USAF DRAWING 41B7634.

CUSTODIAN: Navy - BuAer
Air Force

PROCUREMENT SPECIFICATION
NRL-8-7295

MILITARY STANDARD

RELEASE - PARACHUTE CANOPY QUICK DISCONNECT

MS22008

SHEET 1 OF 1

APPROVED 31 Jan 53 REVISED