

INCH-POUND

MS21995F
 18 November 2005
 SUPERSEDING
 MS21995E
 11 February 1980

DETAIL SPECIFICATION SHEET

SWITCH, ROTARY, AMMETER - VOLTMETER SELECTOR, 115/200 VOLTS, FOR 1, 2, OR 4
 GENERATOR SYSTEM

This specification is approved for use by all
 Departments and Agencies of the Department of Defense.

The complete requirements for acquiring the switch described herein shall consist of this specification and the latest issue of MIL-DTL-6807.

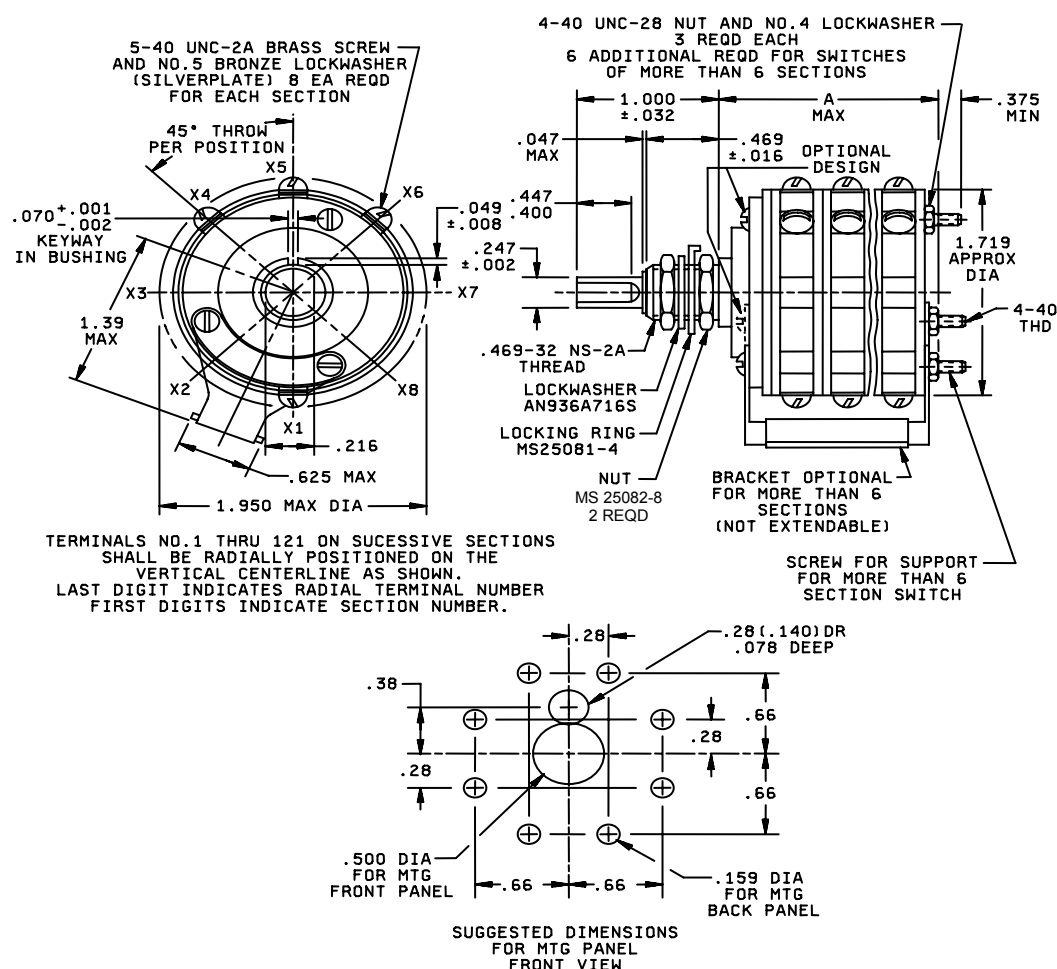
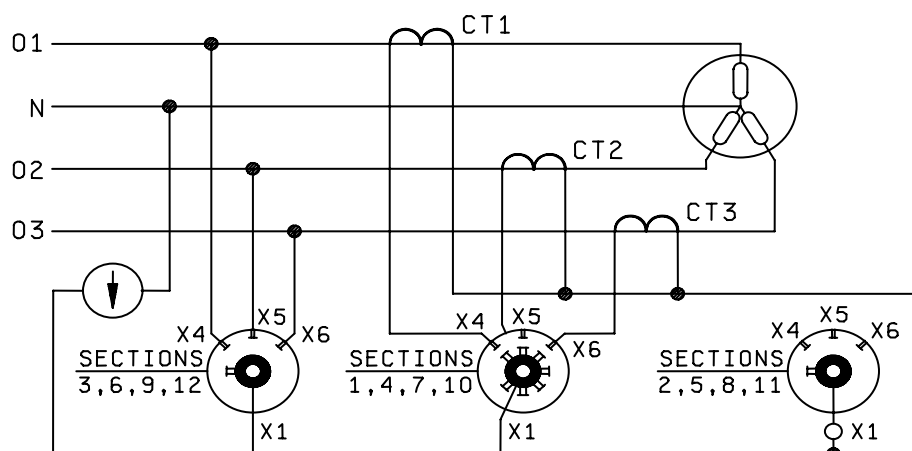


FIGURE 1 Dimensions and configurations

MS21995F



TERMINALS: 14-24, 15-25, 16-26, 44-54, 45-55, 46-56, 74-84, 75-85, 76-86, 104-114, 105-115, 106-116 PERMANENTLY JUMPED.

FIGURE1. Dimensions and configuration Continued.

Inches	mm	Inches	mm
.001	.03	.216	5.49
.002	.05	.247	6.27
.008	.20	.400	10.16
.016	.41	.447	11.35
.032	.81	.469	11.91
.047	1.19	1.000	25.40
.049	1.24	1.151	29.24
.064	1.63	1.250	31.75
.070	1.78	1.719	43.66
.188	4.78	1.950	49.53

NOTES:

1. Dimensions are in inches.
2. Metric equivalents (to the nearest .01 mm) are given for general information only.
3. Unless otherwise specified, tolerances are $\pm .005$ (.13 mm) and $\pm 1/2^\circ$.
4. For design feature purposes, this standard takes precedence over procurement documents referenced herein.

MS21995F

REQUIREMENTS

Shaft is shown in the off position.

Off position of knob may be oriented as desired by positioning of mounting panel detent for engagement with locking ring bent tab.

Threads in accordance with FED-STD-H28, screw threads standards for Federal service.

Stops shall be provided to limit movement of the pointer knob to positions 3, 4, 5 and 6.

Ammeter contacts shall be on section 1-2, 4-5, 7-8, 10-11 and shall make before break.

Shock Method II is required for shipboard application.

Current Capacity 115/200 Volts, 400 Hertz AC
Resistive (Ammeter SW, Only) 5 AMPS, Resistive
Electrical End, 10,000 cycles.

Referenced documents shall be of the issue in effect on date of invitation for Bid

TABLE II. Dash No. Requirements

Dash No. Shock Method I & II	No. Of Sections	Weight (lbs)	Torque (lb.-in.)	"A" Dim
-1	3	.44 Max	7 Max.	1,900
-2	6	.66 Max.	10 Max.	3,025
-3	12	4.20 Max.	18 Max.	5,650

TABLE III. Superseding dash No.

Superseding Dash No. Shock Method I and II	Superseded dash No. Shock Method I and II
-1	-12
-2	-22
-3	-32

QUALIFICATION

1. Single switch submission- qualification will be made in accordance with the qualification table of MIL-DTL-6807.

2. Group submission- In conjunction with qualification of MS25002 switches only specimen numbers 7 and 8 of the qualification table are required, at 200 V, 400 HZ

MS21995F

Referenced documents

MIL-DTL-6807
FED-STD-H28
MS25002J
MS25081
MS25082
AN936

Marginal notations are not used in this revision to identify changes with respect to the previous issue due to the extent of the changes.

Custodians:

Army – CR
Navy – AS
Air Force – 11
DLA – CC

Preparing activity:

DLA - CC
Project (5930-2005-026)

Review activities:

Army – AV, MI
Navy – EC
Air Force – 99

NOTE: The activities listed above were interested in this document as of the date of this document. Since organizations and responsibilities can change, you should verify the currency of the information above using the ASSIST Online database at <http://assist.daps.dla.mil/>.