

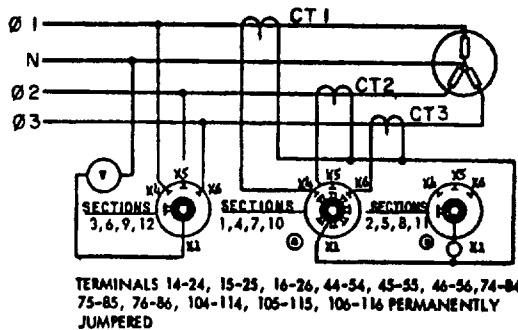
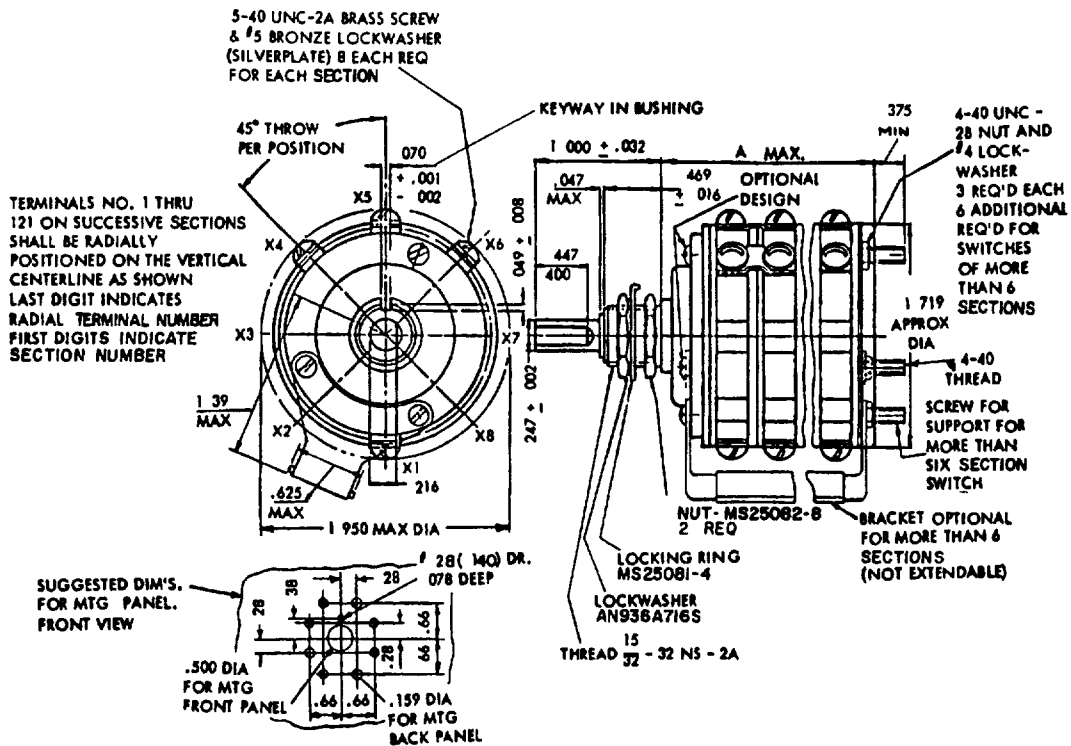
FED SUP CLASS  
5930

DSA - ES MI  
Army - AV, EC  
Navy - OS, EC  
Air Force - 11, 17, 99

User activities  
Army -  
Navy -  
Air Force -

Review activities

This military standard is approved for use by all Departments and Agencies of the Department of Defense. Selection for all new engineering and design applications and for repetitive use shall be made from this document when applicable.



INCHES	MM	INCHES	MM
.001	.03	.216	5.49
.002	.05	.247	6.27
.008	.20	.400	10.16
.016	.41	.447	11.35
.032	.81	.469	11.91
.047	1.19	1.000	25.40
.049	1.24	1.151	29.24
.064	1.63	1.250	31.75
.070	1.78	1.719	43.66
.188	4.78	1.950	49.53

## NOTES:

1. Dimensions are in inches.
2. Metric equivalents (to the nearest .01 mm) are given for general information only and are based upon 1 inch = 25.4 mm.
3. Unless otherwise specified, tolerances are  $\pm .005$  (.13 mm) and  $\pm 1/2^\circ$ .

(E) DENOTES CHANGES

P A USAF - 85 Other Cust NAVY - AS ARMY - ER (E)	International Interest	TITLE SWITCH, ROTARY, AMMETER - VOLTMETER SELECTOR, 115/200 VOLTS FOR 1, 2, OR 4 GENERATOR SYSTEM	MILITARY STANDARD
Procurement Specification MIL - S - 6807	SUPERSEDES	MS21995	SHEET 1 OF 2

DD FORM 672 (Coordinated) PREVIOUS EDITIONS OF THIS FORM ARE OBSOLETE

PROJECT NO. 5930-1121

APPROVED 31 MARCH 1961  
REVISED (A) 25 MAR 1963 (B) 17 SEPT 1963 (C) 19 JUNE 1964 (D) 10 NOV 1969 (E) 11 FEB 80

FED SUP CLASS  
5930

## DETAIL REQUIREMENTS.

- (E)
1. Shaft is shown in the off position.
  2. Off position of knob may be oriented as desired by positioning of mounting panel detent for engagement with locking ring bent tab.
  3. Threads in accordance with FED-STD-H28, Screw Threads Standards for Federal Service.
  4. Stops shall be provided to limit movement of the pointer knob to positions 3, 4, 5 and 6.
  5. Ammeter contacts shall be on Sections 1-2, 4-5, 7-8, 10-11 and shall make before break.
  6. Shock method II is required for shipboard application.

CURRENT CAPACITY 115/200 VOLTS, 400 Hz AC  
RESISTIVE (AMMETER SW, ONLY) 5 AMPS, RESISTIVE  
(VOLTMETER SW, ONLY) 1 AMP  
ELECTRICAL END, 10,000 CYCLES

DASH NO.	No. of Sections	Weight (lbs.)	Torque (lbs. in)	"A" Dim.
Shock Method I & II				
-1	3	.44 MAX	7 MAX.	1,900
-2	6	.66 MAX	10 MAX.	3,025
-3	12	4.20 MAX.	18 MAX.	5,650

## (E) SUPERSESSION TABLE

SUPERSEDING DASH NO.	SUPERSEDED DASH NO.
SHOCK METHOD I & II	SHOCK METHOD I & II
-1	-12
-2	-22
-3	-32

For design feature purposes, this standard takes precedence over procurement documents referenced herein. Referenced documents shall be of the issue in effect on date of invitation for bid.

## QUALIFICATION

1. Single Switch Submission - Qualification will be made in accordance with the Qualification Table of MIL-S-6807.
2. Group Submission - In conjunction with Qualification of MS25002 Switches only Specimen Numbers 7 and 8 of the Qualification Table are required at 200V, 400Hz.

P A <b>USAF - 85</b> Other Cust <b>NAVY - AS</b> <b>ARMY - ER (E)</b>	International Interest	TITLE <b>SWITCH, ROTARY, AMMETER-VOLTMETER          SELECTOR, 115/200 VOLTS FOR 1, 2, OR 4          GENERATOR SYSTEM</b>	MILITARY STANDARD
			<b>MS21995</b>
Procurement Specification <b>MIL - S - 6807</b>	SUPERSEDES	SHEET 2 OF 2	

 User activities  
 Army -  
 Navy -  
 Air Force -

 USA - ES  
 Army - AV, MI  
 Navy - OS, EC  
 Air Force - II, 17, 99

Review activities

This military standard is approved for use by all Departments and Agencies of the Department of Defense. Selection for all new engineering and design applications and for repetitive use shall be made from this document when applicable.

APPROVED 31 MARCH 1961 REVISED (E) FOR CHANGES SEE SHEETS 1 &amp; 2