

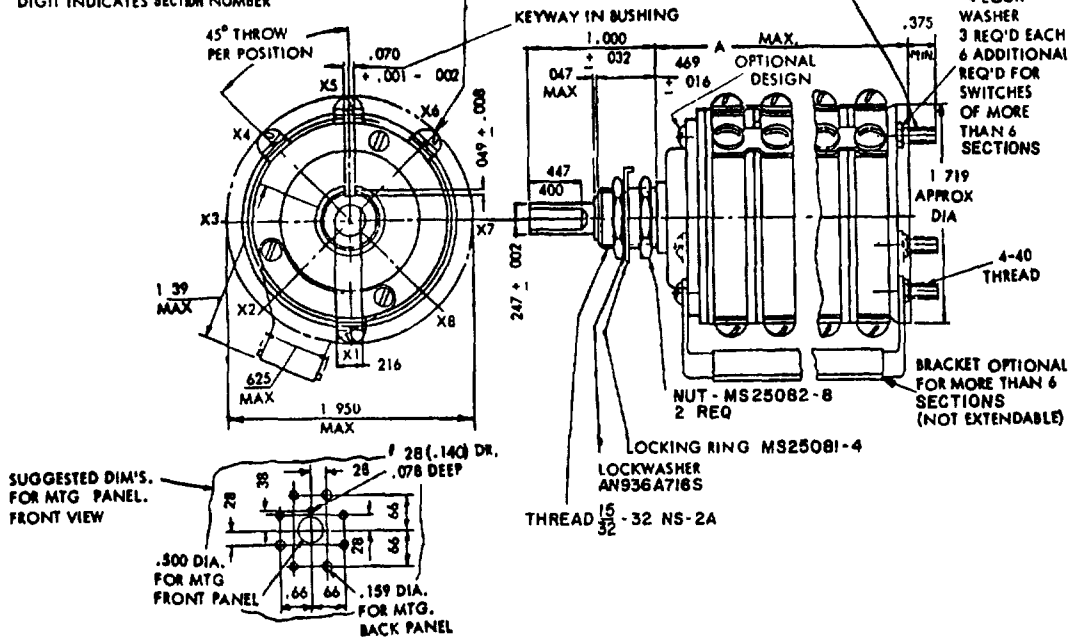
FED SUP CLASS  
5930

TERMINALS NO. 11 THRU 81 ON  
SUCCESSIVE SECTIONS SHALL BE RADIALLY  
POSITIONED ON THE VERTICAL CENTER-  
LINE AS SHOWN. LAST DIGIT INDICATES  
RADIAL TERMINAL NUMBERS, FIRST  
DIGIT INDICATES SECTION NUMBER

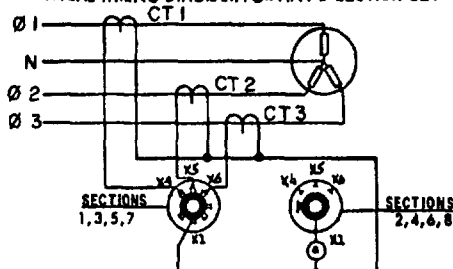
5-40 UNC-2A BRASS SCREW  
& #5 BRONZE LOCKWASHER  
(SILVERPLATE) 8 EACH REQ  
FOR EACH SECTION

SCREWS FOR SUPPORT FOR  
MORE THAN SIX SECTION  
SWITCH.

4-40 UNC -  
28 NUT AND  
#4 LOCK-  
WASHER  
3 REQ'D EACH  
6 ADDITIONAL  
REQ'D FOR  
SWITCHES  
OF MORE  
THAN 6  
SECTIONS



TYPICAL WIRING DIAGRAM FOR ANY 2 SECTION SET



TERMINALS 14-24, 15-25, 16-26, 34-44, 35-45, 36-46,  
54-64, 55-65, 56-66, 74-84, 75-85, 76-86 PERMANENTLY  
JUMPED.

INCHES	MM	INCHES	MM
.001	.03	.216	5.49
.002	.05	.247	6.27
.008	.20	.400	10.16
.016	.41	.447	11.35
.032	.81	.469	11.91
.047	1.19	1.000	25.40
.049	1.24	1.151	29.24
.064	1.63	1.250	31.75
.070	1.78	1.719	43.66
.188	4.78	1.950	49.53

NOTES:

1. Dimensions are in inches.
2. Metric equivalents (to the nearest .01 mm) are given for general information only and are based upon 1 inch = 25.4 mm.
3. Unless otherwise specified, tolerances are  $\pm .005$  (.13 mm) and  $\pm 1/2^\circ$

(E) DENOTES CHANGES

P A USAF - 85 Other Cust NAVY - AS ARMY - ER (E)	International Interest	TITLE SWITCH, ROTARY, AMMETER SELECTOR, 115/200 VOLTS FOR 1, 2, 4 GENERATOR SYSTEM	MILITARY STANDARD MS21994
Procurement Specification MIL-S-6807	SUPERSEDES	SHEET 1 OF 2	

DD FORM 672 (Coordinated) PREVIOUS EDITIONS OF THIS FORM ARE OBSOLETE

PROJECT NO. 5930-1120

This military standard is approved for use by all Departments and Agencies of the Department of Defense. Selection for all new engineering and design applications and for repetitive use shall be made from this document when applicable.

DSA - ES  
 Army - AV, MI  
 Navy - OS, EC  
 Air Force - 11, 17, 99

User activities  
 Army -  
 Navy -  
 Air Force -

Review activities  
 Army -  
 Navy -  
 Air Force -

APPROVED 31 MARCH 1961  
 REVISED (A) 25 MAR 1963 (B) 17 SEPT 1963 (C) 19 JUNE 1964 (D) 10 NOV 1969 (E) 11 FEB 80

FED SUP CLASS  
5930

## DETAIL REQUIREMENTS:

1. Shaft is shown in the off position.
2. Off position of knob may be oriented as desired by positioning of mounting panel detent for engagement with locking ring bent tab.
- ③ 3. Threads in accordance with FED-STD-H28, Screwthreads Standards for Federal Service.
4. Stops shall be provided to limit movement of the pointer knob to positions 3, 4, 5 and 6.
5. Contacts shall be make-before-break.
6. Shock Method II is required for shipboard application.

CURRENT CAPACITY 115/200V, 400 Hertz AC  
RESISTIVE 5 AMP  
ELECTRICAL END 10,000 CYCLES

DASH NO.	NO. OF SECTIONS	WEIGHT (LBS.)	TORQUE (LB.-IN.)	"A" DIM
SHOCK METHOD I & II				
-1	2	.4 MAX.	6 MAX.	1,525
-2	4	.6 MAX.	8 MAX.	2,275
-3	8	9 MAX.	14 MAX.	4,;50

③ SUPERSESSION TABLE

SUPERSEDING DASH NO.	SUPERSEDED DASH NO.
SHOCK METHOD I & II	SHOCK METHOD I & II
-1	-12
-2	-22
-3	-32

For design feature purposes, this standard takes precedence over procurement documents referenced herein. Referenced documents shall be of the issue in effect on date of invitation for bid.

- QUALIFICATION
1. Single Switch Submission - Qualification will be made in accordance with the Qualification Table of MIL-S-6807.
  2. Group Submission - In conjunction with Qualification of MS25002 Switches only specimen numbers 7 and 8 of the Qualification Table are required, at 200V, 400 Hz

☆U.S. GOVERNMENT PRINTING OFFICE 1981 - 505-022/8697

P A USAF - 85 Other Cust NAVY - AS ARMY - ER ③	International Interest	TITLE SWITCH, ROTARY, AMMETER SELECTOR, 115/200 VOLTS FOR 1, 2, 4 GENERATOR SYSTEM	MILITARY STANDARD
			MS21994
Procurement Specification MIL - S - 6807		SUPERSEDES	SHEET 2 OF 2